

## PlumbQwik<sup>™</sup>

by Fernco

- Creates a watertight seal between two plain ended pipes
- Designed for waste and grey water applications
- Connect what would normally be incompatible pipe systems
- Large range of straight and adaptor variations
- Extremely easy to fit using a nut driver
- Remove and re-fit as required



PlumbQwik<sup>™</sup> is a range of plumbing couplings by Fernco for above ground drainage applications, commonly found under kitchen sinks, shower trays, baths, behind washing machines etc.

Unlike many other plumbing couplings on the market, PlumbQwik's can connect any material pipe, provided it fits within the products size range. Made from flexible phthalate free PVC, the couplings can also adapt to imperfect

pipe alignment, making them ideal for repair scenarios and rectifying previous bad workmanship. The product range covers all common pipe sizes as straight or adaptor (also known as reducer) applications.



Straight PlumbQwik<sup>™</sup>



Adaptor PlumbQwik<sup>™</sup>



Elbow PlumbQwik<sup>™</sup>



Tee PlumbQwik<sup>™</sup>



End Cap PlumbQwik<sup>™</sup>

Fit horizontally or vertically

Strong stainless steel clamp bands

High quality PVC coupling body



Product Code	PQXXX
Description	PlumbQwik Coupling
Size Range	21-364mm
Material	PVC 1.4301 (304) Stainless Steel <i>Couplings with a different material makeup are available on request.</i>
Temperature Range	-34°C to 40°C constant, 60°C intermittent
Pressure Rating	0.5bar, 7.25psi



### Straight PlumbQwik™ Range

Product Code	Reference	Size Range (mm)	Tightening Torque
PQ028	E028-028BL   027-027	21-29	6Nm
PQ038	E038-038BL   035-035   TC-150	30-39	6Nm
PQ042	E042-042BL   041-041	31-40	6Nm
PQ045	E045-045BL   041-041	37-45	6Nm
PQ050	E050-050BL   049-049	40-49	6Nm
PQ058	E058-058BL   059-059	50-59	6Nm
PQ063	E063-063BL   062-062	53-62	6Nm
PQ068	070-070	60-69	6Nm
PQ085	E085-085BL   086-086	75-86	6Nm
PQ090	E090-090BL   090-090	78-89	6Nm
PQ095	E095-095BL	85-96	6Nm
PQ101	101-101	95-101	6Nm
PQ112	112-112	101-112	6Nm
PQ122	E122-122BL   121-121	110-123	6Nm
PQ133	133-133	127-133	6Nm
PQ142	142-142	136-142	6Nm
PQ162	162-162	152-162	6Nm
PQ188	188-188	180-188	6Nm



## Adaptor PlumbQwik™ Range

Product Code	Reference	Size Range A (mm)	Size Range B (mm)	Tightening Torque
PQ040-032		32-41	25-33	6Nm
PQ050-042	E050-042BL   049-041	40-49	32-41	6Nm
PQ058-038	060-034   060-038	50-59	30-39	6Nm
PQ058-045	E058-045BL   059-048   061-047	50-59	37-46	6Nm
PQ070-060	070-060	65-70	57-60	6Nm
PQ085-058	E085-058BL   084-060	75-86	50-59	6Nm
PQ086-047	086-047	80-86	44-47	6Nm
PQ101-089	101-089	95-101	85-89	6Nm
PQ112-045	E112-045BL   111-049	100-113	37-46	6Nm
PQ112-050	E112-050BL   111-049	98-111	40-49	6Nm
PQ112-085	E112-085BL   111-085	100-113	75-86	6Nm
PQ113-059	113-059	106-113	53-59	6Nm
PQ122-112	E122-112BL   123-111	110-123	100-113	6Nm
PQ124-118	1003-44	114-124	104-118	6Nm
PQ127-115	127-115	118-127	104-115	6Nm
PQ133-084	133-084	111-133	79-84	6Nm
PQ135-115	135-115	113-135	107-115	6Nm
PQ142-111	142-111	136-142	101-111	6Nm
PQ160-133	160-133	149-160	111-133	6Nm
PQ163-111	163-111	155-163	101-111	6Nm
PQ187-111	187-111	177-187	101-111	6Nm
PQ190-162	190-162	177-190	152-162	6Nm



## Elbow PlumbQwik™ Range

Product Code	Reference	Size Range (mm)	Tightening Torque
PQE038	E038LBL	30-38	6Nm
PQE048	048L	41-48	6Nm
PQE062	060L	54-62	6Nm
PQE085	085L	80-89	6Nm
PQE112	112L	105-116	6Nm
PQE112	112L	105-116	6Nm



## Tee PlumbQwik™ Range

Product Code	Reference	Size Range (mm)	Tightening Torque
PQT038	E038TBL	30-38	6Nm
PQT048	048T	41-48	6Nm
PQT062	060T	54-62	6Nm
PQT085	085T	80-89	6Nm
PQT112	112T	105-116	6Nm



## End Cap PlumbQwik™ Range

Product Code	Reference	Size Range (mm)	Tightening Torque
PQC028	028C	25-28	6Nm
PQC042	042C	35-47	6Nm
PQC048	E048C	43-50	6Nm
PQC060	060C	54-63	6Nm
PQC070	070C	60-70	6Nm
PQC089	085C	80-89	6Nm
PQC100	100C	88-100	6Nm
PQC112	112C	108-114	6Nm
PQC125	125C	115-125	6Nm
PQC142	142C	135-146	6Nm
PQC162	162C	150-162	6Nm
PQC181	181C	170-181	6Nm
PQC215	215C	204-220	6Nm
PQC230	230C	233-237	6Nm
PQC250	250C	243-257	6Nm
PQC274	274C	268-280	6Nm
PQC328	328C	322-334	6Nm
PQC358	358C	352-364	6Nm

# Installation



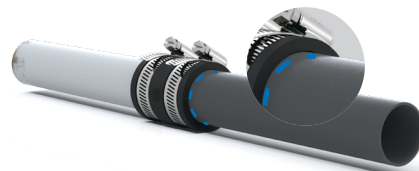
1. Mark both pipes from the end to be connected, half the width of the coupling, less the required joint gap, which is usually 10mm.



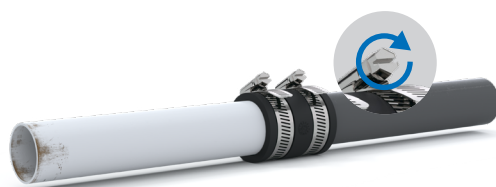
2. Slide the coupling fully over one of the pipes.



2. Align the pipes and slide the coupling onto the other pipe, ensuring the coupling face and marked line are flush. Tighten this clamp band.



4. Position the remaining pipe, ensuring the coupling face and marked line are flush. Tighten this clamp band.



5. Tighten the clamp bands to the recommended torque.

Note: The above instructions outline the method of connecting two pipes of the same diameter using a Straight PlumbQwik. This method can also be followed to make connections using other couplings in the PlumbQwik range.

# General Information

## Quality, Standards and Approvals

Fernco has been certified by the British Standards Institution (BSI) as a company of assessed capability, with a quality management system which meets the requirements of BS EN ISO 9001:2015

Fernco UK, part of a global group of companies, are the leaders in wastewater connection innovation; utilising the most advanced methods and techniques for precision-manufactured products, all of which comply with or exceed relevant British and European standards to ensure reliability and sustainability.

## Environment

Fernco operate Environmental Management Systems which are certified to ISO 14001: 2015.

## Supply

Fernco are proud members of the Builders Merchants Federation (BMF). All Fernco products are supplied through a national and global network of distribution and merchant partners. For stockist details, contact Fernco.

## Technical Support

Fernco have a team of product experts on hand to support all customers with technical support and advice.

Contact Fernco Technical Department:

Tel: +44 (0) 1226 344100

Email: [technical@fernco.co.uk](mailto:technical@fernco.co.uk)

## Enquiries

UK Sales:

Tel: +44 (0) 1226 340 888

Email: [sales@fernco.co.uk](mailto:sales@fernco.co.uk)

International Sales:

Tel: +44 (0) 1226 344 105

Email: [export.dept@fernco.co.uk](mailto:export.dept@fernco.co.uk)