

Talon FLUE SNUG FS5

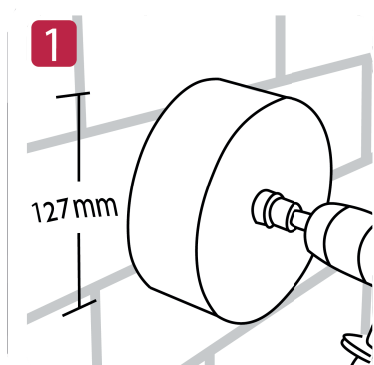


Code	Colour	Size	Pack Qty
PFS5B	Black	100mm	Pack of 1
PFS5W	White	100mm	Pack of 1

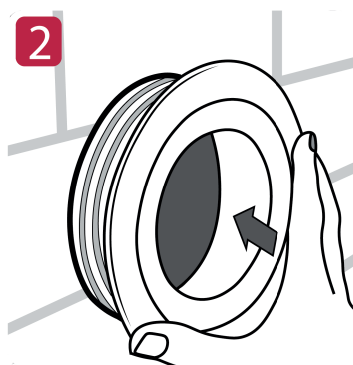
100mm FS5



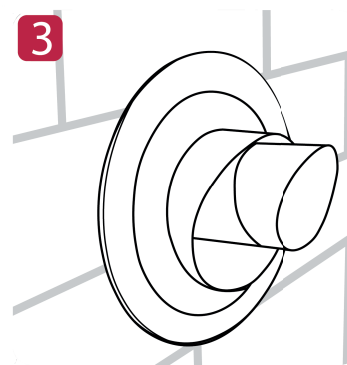
Installation Instructions



Core drill hole using
standard 127mm core



Insert FlueSnug into
core-drilled hole



Push through Flue

Talon® FLUE SNUG 5

100mm

- Designed to fit 100mm boiler flues.
- Complies with Part L Building Regulations.
- Can be used internally and externally.
- Endorsed by Worcester Bosch, Ideal Heating and other leading boiler manufacturers.

Core Drill Size	L (mm)	W (mm)	H (mm)	Wgt (kg)	Material (Part 1)	Material (Part 2)	Colours
127mm	155	155	63	0.144	Polypropylene with UV 91872 hindered amine light stabiliser (HALS) additive	TPE (thermoplastic elastomer) with heat and UV stabiliser	Black & White

