

Ecostat
Bath thermostat 1001 CL for exposed installation
 Finish: **Chrome** Article Number: **13201000**



Description

product features

- projection 182 mm
- 2 functions
- thermostat cartridge, shut-off valve
- spray type mixer: normal spray
- maximum flow rate at 3 bar: 20 l/min
- flow rate for bath spout at 3 bar: 20 l/min
- flow rate of hand shower at 3 bar: 16 l/min
- min. operating pressure: 1 bar
- max. operating pressure: 10 bar
- Safety stop at 40 °C
- temperature limitation adjustable
- non-return valve
- with silencer
- material handles: metal
- connection dimension: DN15
- connection type: s-shaped connections, G 1/2
- centre distance: 150 ± 12 mm
- dirt filter included

Technology



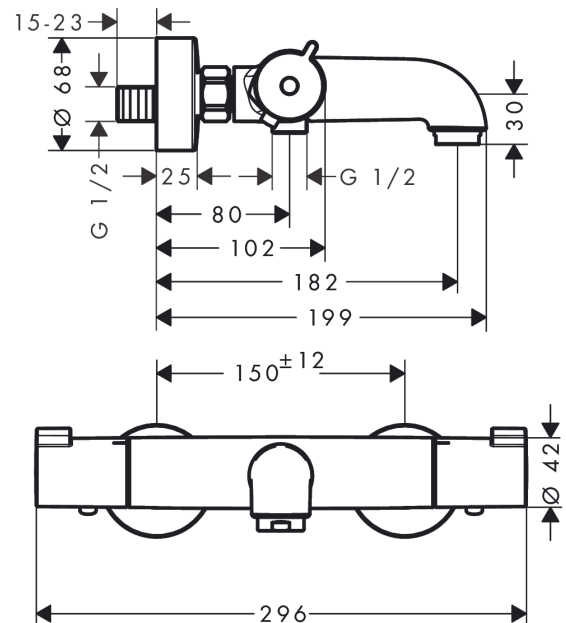
Certificates / Sustainability



Product image



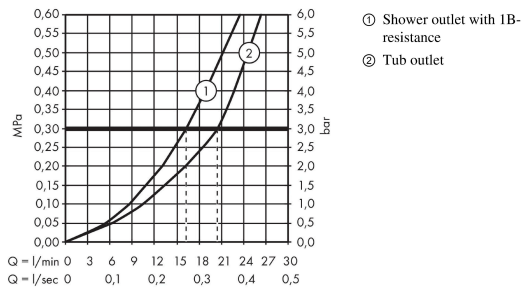
Scale drawing



Ecostat
Bath thermostat 1001 CL for exposed installation
 Finish: **Chrome** Article Number: **13201000**



Flowchart

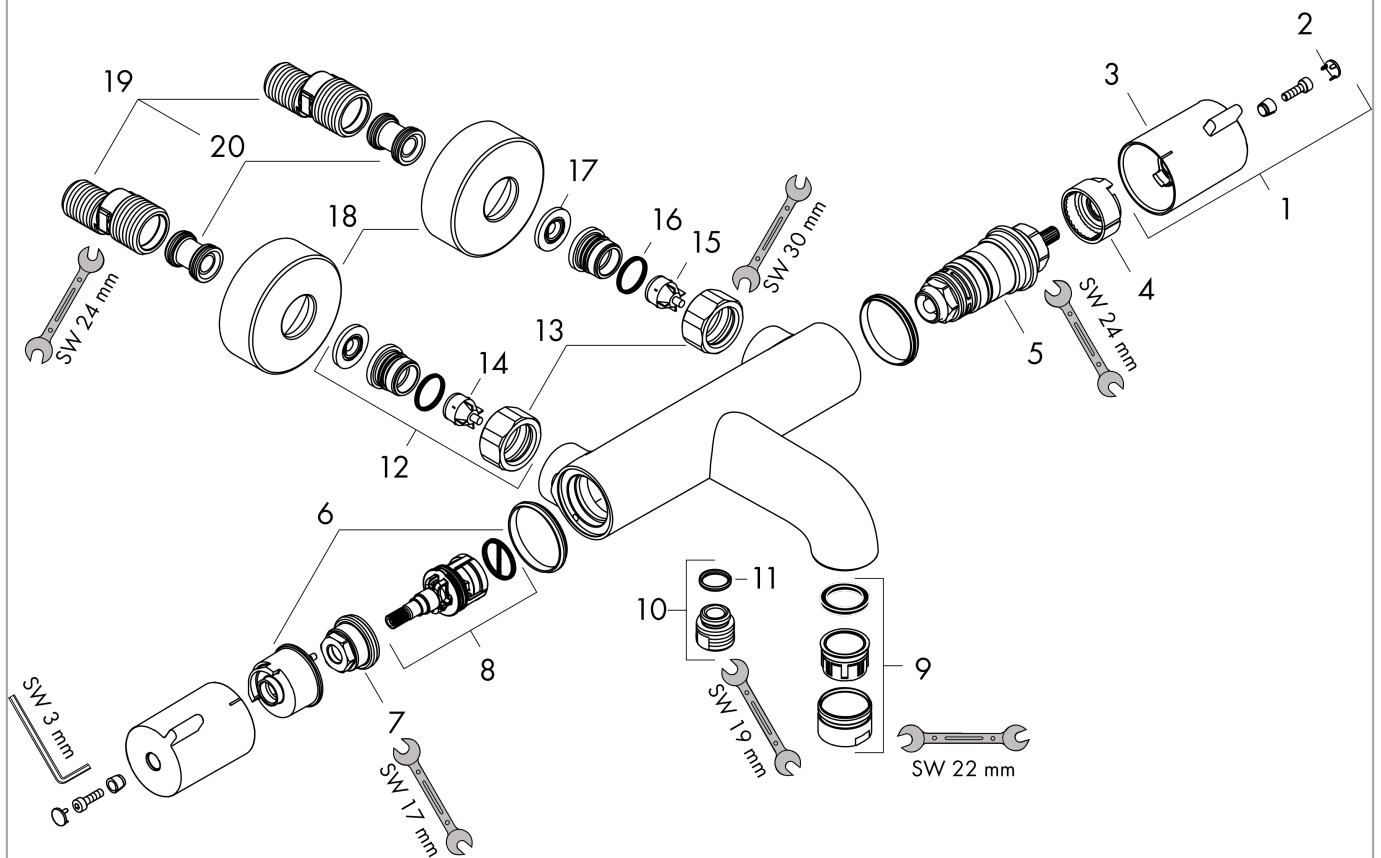


Ecostat
Bath thermostat 1001 CL for exposed installation
 Finish: **Chrome** Article Number: **13201000**



Exploded Drawing

Year of production: >09/19



Ecostat

Bath thermostat 1001 CL for exposed installation

Finish: **Chrome** Article Number: **13201000**



Spare part list

Year of production: >09/19

Pos.	Description	Article Number	PC	PU
1	handle	92836000	9	1
2	cover cap	95433000	2	1
3	pushbutton	92848000	2	1
4	safety set for temperature control	95041000	5	1
5	thermostat cartridge	94282000	15	1
6	stop ring for flow control	98674000	3	1
7	nut	92853000	3	1
8	shut off unit with selector	96509000	13	1
9	aerator M24x1 (25 l/min)	92511000	4	1
10	connecting thread	95392000	6	1
11	O-ring 14x2	98129000	1	1
12	set of unions	94285000	99	1
13	set of nuts	96157000	8	1
14	non return valve (pressure-resistant up to 2 MPa)	93136000	8	1
15	non return valve	96737000	8	1
16	O-ring 17x1,5	98137000	1	1
17	filter packing	96922000	3	1
18	escutcheon Ø 68 mm	96467000	6	1
19	set of S-unions (±12 mm)	94140000	10	1
20	noise reduction	96429000	2	1