

## Material Application

Highly vapour-permeable, three-layer roof membrane made of a layer of microporous functional film protected on both sides with a polypropylene vlies. The film layer provides resistance to water penetration and regulates the water vapour flow through the roof system.

## Application

- On roofs with full deck or purlins
- Initial underlay for thermally insulated, ventilated, sloping roofs
- For most types of roof coverage, and in particular for concrete tiles and sheet tiles

## Features & Benefits

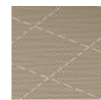
- Improves the efficiency of thermal insulation
- Reduces energy consumption and regulates the flow of water vapour
- Reduces CO2 emissions to the atmosphere
- Resistant to high and low temperatures
- Resistant to mechanical damages
- Compliant to BS 5534 and BS 5250 requirements

## Technical characteristics

Material	Polypropylene
Composition	3
Weight	160 g/m <sup>2</sup> (+10%)
Width	1,5 m / 1 m
Length	50 m
Reaction to fire	Class E
Resistance to water penetration	Class W1
Water vapour resistance (Sd)	0,02 m (-0,01/+0.03)
Tensile strength long MD	350 N/50 mm
Tensile strength across CD	240 N/50 mm
Elongation along MD	70 %
Elongation across CD	70 %
Tear resistance along MD	140 N
Tear resistance across CD	230 N
Flexibility at low temperature	≥-40°C
Alignment	Requirements met
Stability of dimensions	<2 %
Resistance to UV	3 months
Temperature resistance	- 40°C to + 80°C
Meet the requirements	EN 13859-1:2010, EN 13859-2:2010
Wind Zones	Zones 1 to 5 (≤345 mm batten gauge) Zones 1 to 5 (≤250mm batten gauge)



## Color



Beige

## Packaging

Roll 1,5/1 m x 50 m

## Storage

Store rolls horizontally on the pallet or standing on the end after being opened, in a dry, protected from direct sunlight area. Protect material from direct sunlight and inclement weather until ready for use. Keep away from chemical substances, in particular those based on solvents.

## Warranty

All the claims will be considered with respect to application recommendations issued by Onduline company.

Visit [www.onduline.co.uk](http://www.onduline.co.uk) for the BBA certificates.

## Installation

The product should be installed in accordance with the manufacturers' installation guidelines and relevant clauses in BS 5534, Code of Practice and BS 8000. For more details, please seek professional advice or contact [enquiries@onduline.net](mailto:enquiries@onduline.net).

This TDS was made based on currently available information. Product was made in accordance with above mentioned parameters but producer/distributor can't anticipate any future change as well as change of regulations. It is the consumer's responsibility to use the product in accordance to producer/ distributor recommendations and his needs. All the claims will be considered with respect to application recommendations issued by Onduline company.

[onduline.com](http://onduline.com)

5-7 rue Frédéric Clavel,  
92150 Suresnes  
FRANCE