

Table of contents

Product	Article	EAN
ROMAX COMPACT III Set M15-22-28, 2Ah, UK, CAS	1000004332	4004625556351

Properties

ID	33013
External Key	1000004332
Status	Sharing (all languages)
Classes	Variant (7119), UN number (9344), Special treatment class (9347), Multi purpose equipment (pressing/cutting/piercing) (50367887), Marketing Product (7118), Battery/battery (7316), EC001186 - Multi-tool (pressing/cutting/punching) (8680), AMP Share (11733), Product group (7637), Pressing machine (7320), Product line (6902), Product area (6901), Brand (6900)
Last Change	01/04/24 02:48:17 pm

General

Description Variant	ROMAX COMPACT III Set M15-22-28, 2Ah, UK, CAS
UN number	ELI1
Article	1000004332
EAN/GTIN	4004625556351
Customs tariff number	84678900
Brand name	ROTHENBERGER
SKU	1000004332
Execution	M, 15-22-28mm, CAS, UK
Basic designation	ROMAX COMPACT III Set
Name of the variant website	ROMAX COMPACT III Set M15-22-28, 2Ah, UK, CAS
Description Variant Catalogue (Print)	ROMAX COMPACT III Set M15-22-28, 2Ah, UK, CAS
Website Marketing Product Name	Press machine ROMAX COMPACT III, CAS

Name Marketing Product Catalog (Print)

Press machine ROMAX COMPACT III, CAS

Reference data

Category

Grout

Product Hierarchy No.

170100040002000200

Base Unit of Measure/Unit of Content

Piece

Material group

Discount group 2

Brand

ROTHENBERGER

Product group

Pressing technology, composite pipe machining

Price Unit/Price Reference Quantity

1

Unit of measure/order unit

Piece

Country of origin

DE - Germany

Region of origin

Hesse

Valid from

03/01/2023

Reference data

Valid until

12/31/2023

Net weight

9,260 kg

Gross weight

9.625 kg

Packing Length

400,000 mm

Packing Width

400,000 mm

Shipping Weight

9.625 kg

Packing Height

145,000 mm

Minimum Order Quantity Multiples

1

Packaging volume

23,490 cm³

Product Hierarchy	ROMAX Compact TT
-------------------	------------------

Minimum amount	1
----------------	---

Special Treatment Class	UN
-------------------------	----

Product specification	Core range
-----------------------	------------

Predecessor	1000002124
-------------	------------

Maximum amount	no maximum quantity
----------------	---------------------

Durability	99
------------	----

Packaging quantity	1
--------------------	---

Length x Width x Height	40,000 X 14,500 X 40,500 cm
-------------------------	-----------------------------

Length	40,000 cm
--------	-----------

Width	14,500 cm
-------	-----------

Height	40,500 cm
--------	-----------

Specifications

System Battery	CAS
----------------	-----

Batterie System	Li-Ion / Li-Po battery (rechargeable)
-----------------	---------------------------------------

Battery Type	Rechargeable
--------------	--------------

Piston force	19 kN
--------------	-------

Zeit Preschiclus	3 s
------------------	-----

Capacity battery	2 A
------------------	-----

Battery Number	1 piece
----------------	---------

Type Battery	Li-HD
--------------	-------

Marketing

Neutral designation	Smart Press machine
---------------------	---------------------

Application benefits	<ul style="list-style-type: none"> • Connected: Press data acquisition in real time via ROTHENBERGER App • Fast: 3-second pressing by means of effective pressure build-up
----------------------	--

Marketing

- Strong: Crimped fittings up to Ø 35 mm (metal) / Ø 40 mm (plastic)
- Comfortable: Perfectly balanced center of gravity enables comfortable working
- Handy: Only 2.5 kg weight spread over 34 cm length

The ROMAX COMPACT III Set UK includes the press jaws of the contour M in the sizes 15-22-28 mm. The electro-hydraulic, radial pressing machine ROMAX COMPACT III is ideal for pressing fittings up to 35 mm (metal) or 40 mm (plastic) in accordance with the system, even in confined positions. The ROMAX COMPACT III presses fittings with a piston force of 19 kN and a

Marketing text	<p>Pressing cycle of 3 seconds. Constant pressing force over the entire press cycle is ensured by Constant Force Technology (CFT). Real-time data collection of relevant data from relevant machine parameters and convenient creation of Press protocols directly on site using the ROTHENBERGER app through CONNECTIVITY. Thanks to the optimized compact design and perfectly balanced weight, installation work over longer stages is a breeze.</p>
----------------	---

Application	The electro-hydraulic cordless press machine for system-dependent grouting of fittings for domestic installations, Floor and service work.
-------------	--

Product	Smart cordless pressing machine for system-dependent pressing of fittings up to Ø 35 mm (metal) and Ø 40 mm (plastic systems).
---------	--

1. Feature	Connectivity (ROTHENBERGER App)
------------	---------------------------------

1. Benefit	<p>Documentation of press work directly on site at the site, Control of service requirements (machine only) and increase in Workflow Efficiency</p>
------------	---

1. Function	<p>Visualization of machine parameters/data (e.g. Serial Number, Service Countdown, Battery Countdown, T of press cycles as well as preparation of press reports</p>
-------------	--

2. Feature	Ergonomic design (two-cylinder layout)
------------	--

3. Feature	CFT (Constant Force Technology)
2. Function	The rearrangement of the internals reduces the product length by 15% and allows for a balanced weight distribution
3. Function	Ensures constant pressing force over the entire life cycle
2. Benefit	Improves the overall handling of the machine (less exhaustion) as well as in tight/complex installation conditions/ Rooms
3. Benefit	Reliable machine for ideal pressing performance
Indent 1 Headline	Balanced machine design
Indent 1 Subline	Optimized size and weight improve machine Handling in daily use
Indent 2 Headline	Push-2-Lock Knob
Marketing	
Indent 2 Subline	Convenient and fast jaw locking as a result of a new Principle of action
Indent 3 Headline	Connectivity
Indent 4 Headline	Splash-proof
Indent 5 Headline	Multiple battery systems
Indent 6 Headline	Constant Force Technology (CFT)
Indent 3 Subline	Real-time press data acquisition
Indent 4 Subline	Function ensured even in the event of possible water ingress
Indent 5 Subline	Suitable for AMP Share or CAS battery systems
Indent 6 Subline	Keeps the pressing force constant
	ROMAX COMPACT III Press Compact, SV, 15 mm

Sheet

ROMAX COMPACT III Set M15-22-28, 2Ah, UK,
CASE



Press Compact, SV, 22 mm

Scope of delivery

Press Compact, SV, 28 mm18 V / 2 Ah Akku

Charger UK

User manual ROMAX Compact III ROCASE

Media

Detail



1000004265_romax-compact-III-cas_d01.tif
MamfileID: 165825
Description:
FileType: tif



1000004265_romax-compact-III-cas_d02.tif
MamfileID: 165824
Description:
FileType: tif



1000004265_romax-compact-III-cas_d03.tif
MamfileID: 165823
Description:
FileType: tif

CAS Media

Main



1000004265_romax-compact-III-cas_p01.tif
MamfileID: 165904
Description:
FileType: tif

Application picture



1000004265_romax-compact-III_anw01.tif
MamfileID: 165828
Description:
FileType: tif



1000004265_romax-compact-III_anw02.tif
MamfileID: 165827
Description:
FileType: tif



1000004265_romax-compact-III_anw03.tif
MamfileID: 165826
Description:
FileType: tif



1000004265_romax-compact-III_anw04.tif
MamfileID: 165829
Description:
FileType: tif

CAS Media

Product Image



1000004265_romax-compact-III-cas_p02.tif

MamfileID: 165979

Description:

FileType: tif

Icons



RO_Icons_Produkteigenschaften_RGB_RO SERVICE+.eps

MamfileID: 70888

Description:

FileType: eps



RO_Icons_Produkteigenschaften_RGB_ROCASE.eps

MamfileID: 70886

Description:

FileType: eps



RO_Icons_Produkteigenschaften_RGB_CFT.eps

MamfileID: 70906

Description:

FileType: eps



RO_Icons_Produkteigenschaften_RGB_RO App.eps

MamfileID: 70889

Description:

FileType: eps

CAS Media

Operating instructions

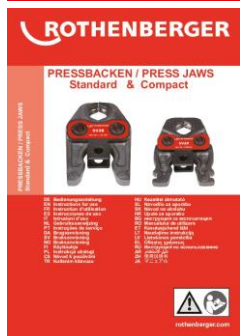


1300007247-i0 BA-ROMAX Compact III CAS-0723.pdf

MamfileID: 171864

Description:

FileType: pdf



92605-i7 BA Pressbacke St-Co_A6-0921.pdf

MamfileID: 70716

Description:

FileType: pdf

Launchvideo



MP-33007_ROMAX_COMPACT_III_Launchvideo_EN.mp4

MamfileID: 166965

Description:

FileType: mp4



MP-33007_ROMAX_COMPACT_III_Launchvideo_DE.mp4

MamfileID: 166966

Description:

FileType: mp4

Product Video



MP-33007_ROMAX_COMPACT_III_Productvideo_EN.mp4

MamfileID: 166818

Description:

FileType: mp4



MP-33007_ROMAX_COMPACT_III_Productvideo_DE.mp4

MamfileID: 166817

Description:

FileType: mp4



MP-33007_ROMAX_COMPACT_III_Productvideo_ES.mp4

MamfileID: 184997

Description:

FileType: mp4

<script type="text/javascript" async src="//orbitvu.co/share/Tz4LLoi8MXK32ydFqkaaVF/5871856/360/script?width=auto&height=auto&content2=yes&partial_load=yes"></script>

Sheet

ROMAX COMPACT III Set M15-22-28, 2Ah, UK,



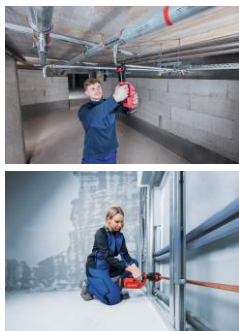
CAS Media

RoHS Declaration



EU Declaration of Conformity ROMAX Compact III-01.08.2023.pdf
MamfileID: 171865
Description:
FileType: pdf

Key Visual



1000004265_romax-compact-III-cas_key01.tif
MamfileID: 167135
Description:
FileType: tif

klein_1000004266_romax-compact-III-amp_key01(2).tif
MamfileID: 241692
Description:
FileType: tif

360 Degree Shooting - OrbitVU

```
<div class="orbitvu-viewer" style="width: 350px; height: 300px;" >  
  <div id="ovContent-Tz4LLoi8MXK32ydFqkaaVF" style="background: url(//cdn.orbitvu.co/  
    share/Tz4LLoi8MXK32ydFqkaaVF/still/view?height=300&max_width=350) no-repeat center center transparent; width: 350px;  
    height: 300px;" ></div>  
</div>
```

Script

Press Jaw Compatibility



2023.12_ROTHERBERGER_Jaw_Approval_List_Website.pdf
MamfileID: 275272
Description:
FileType: pdf

Crossselling

Crossselling



TUBE CUTTER 42 PRO, 6-42 mm (1/4-1.5/8")
Article: 70029

Sheet

ROMAX COMPACT III Set M15-22-28, 2Ah, UK,
CASE



Crossselling



Tool Set Apprentice, 50 pieces

Article: 19166



Tube Cutter 35 + Universalentgrater

Article: 19152
