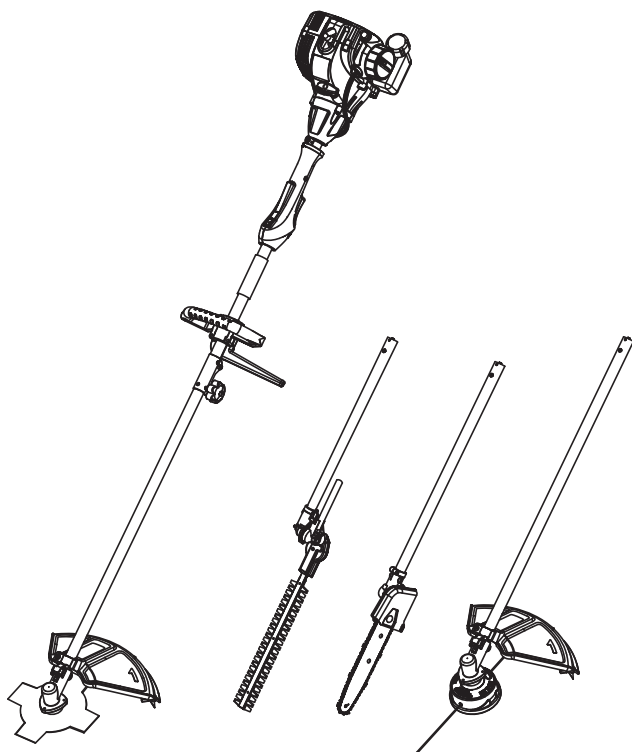




**SBC30**



**PETROL BRUSH CUTTER WITH  
MULTI TOOLS  
ORIGINAL INSTRUCTION MANUAL**

## PRODUCT SAFETY



### **WARNING! READ ALL INSTRUCTIONS**

Failure to follow all instructions listed below may result in, fire and/or serious injury. This product should not be operated by those who are unfamiliar with the manual.

Save these instructions and forward the product only together with this instruction manual.

## SAVE THESE INSTRUCTIONS

## GENERAL SAFETY WARNINGS

### **1. Keep people away from work area.**

This trimmer is intended for use by gardening professionals. Keep children, animals and bystanders at least 50 feet (15meters) away from work area. Do not allow children or untrained individuals to use this unit. Keep all parts of your body away from any moving part.

### **2. Personal safety**

Always wear suitable safety equipment to protect your eyes, ears, hands, legs and feet. Tie back long hair. Switch off engine before examining or clearing the cutting head.

### **3. Clothing**

Wearing protective clothing also reduces this risk and severity of injury from thrown debris or contact with the cutting attachment. Wear the cutter harness, gloves, a long-sleeved shirt, long pants, and sturdy boots with non-slip soles. Adjust the tool harness so that the machine feels comfortable and well balanced.

### **4. Look after the machine**

When not in use, store in a dry, high place or keep locked up out of children's reach.

### **5. Check before use**

Before use always ensure that the tool is not damaged, if in doubt contact the helpline.

### **6. Do not operate this unit when you are tired, ill, or under the influence of alcohol, drugs, or medication.**

A moment of inattention while operating the

cutter may result in serious personal injury.

## **7. Working environment**

Objects thrown by the trimmer can cause serious injury. Before operating the trimmer, carefully inspect the area and remove any broken glass, pieces of wire, and other loose objects – which can be thrown or entangled in the cutting head. A fire extinguisher must be available for use nearby. Do not operate in poor light conditions.

## **8. Use the product only for its intended purpose as described.**

Do not overreach as this can result in loss of balance or exposure to hot surfaces. Keep proper footing and balance at all times. This enables better control in unexpected situations.

## **9. Exhaust danger**

Never operate petrol engines indoors or in confined spaces. Pay special attention to doorways and air conditioning inlets. Do not allow the exhaust gases to enter buildings. The exhaust gases fumes contain gasses that can kill. Do not touch areas around the exhaust or cylinder as these parts become very hot during operation.

## **10. Fuel Safety**

Warning: This product requires unleaded petrol and 2-stroke oil, ratio 1:40.

- a) Always handle fuel with care. It is highly flammable.
- b) Use only an approved container for fuel storage and mixing.
- c) Never mix petrol/ oil in the machine fuel tank.
- d) Do not smoke, and avoid sparks and flames near fuel or unit.
- e) Avoid spillage of fuel or oil. Wipe up all spillages as quickly as possible.
- f) Mix fuel outdoors where there are no sparks or flames.
- g) Do not inhale fuel fumes.
- h) Move at least 3 meters (10 feet) from refueling position before starting the engine. Stop the engine and allow to fully cool before refueling or storing the machine.
- i) Never use exposed light bulbs while refueling.
- j) Change your clothes if you spill fuel on yourself.
- k) Keep petrol and oil away from eyes. If petrol or oil comes in contact with eyes, wash them immediately with clean water. If irritation is still present, seek immediate medical help.

## **11. Transport, handling and storage of the unit**

- a) Switch off the engine when you cross roads or gravel paths.
- b) Always clean and maintain before storing, pay special attention to the guards and cutting attachments.
- c) Before transporting the unit in a vehicle - stop the engine and allow it to cool. Empty the fuel tank and securely locate the unit.
- d) When removing the tool from a vehicle or from storage, be careful not to drop the engine on the ground as this may severely damage the fuel tank.
- e) Never drag the tool across the ground, or throw it to the ground - this is highly dangerous and will damage the fuel tank, causing the fuel to leak, possibly causing fire.
- f) Remember when moving the equipment to lift it the entirely from the ground.

## **12. Start and commissioning of the unit**

- a) For units with a clutch, check that the cutting attachments stop turning when the engine is at idles speed.
- b) Read instructions on filling of fuel and oil, especially concerning fire precautions and to carburetor adjustment section.
- c) Always switch off the engine and allow it to cool before making any adjustments
- d) Make sure all guards, straps, debris shield and handles are properly and securely attached.

## **13. Injuries by rotating parts**

Do not touch rotating or moving parts until they have come to a complete stop.

Do not remove wrapped twigs or other debris from moving or rotating parts when the engine is running. Switch off the engine before attempting maintenance.

## **14. Transport, handling and storage of the unit**

Cleaning and maintenance before storage and transport, including the use of guards on cutting attachments.

**15. Maintain a firm grip, with thumbs and fingers encircling the handles, with both hands on the handles and position your body and arm to allow you to resist kickback forces.** Kickback forces can be controlled by the operator, if proper precautions are taken.

## **16. Look around the engine for signs of oil or petrol.**

Wipe up any spills before starting the engine.



- 17. Check that all fasteners, guards and handles etc are in place and secure.** Tighten as necessary.
- 18. Check the fuel level.** Starting with a full tank will help to eliminate or reduce operating interruptions for refueling.

## **MAINTENANCE AND REPAIR**

1. Check the air filter. A dirty air filter will restrict airflow to the carburetor, reducing engine and cutting performance.
2. Check the throttle cable. The cable must be correctly adjusted and operate smoothly for good throttle control.
3. Replace any damaged parts. Use only the manufacturer's recommended replacement parts and accessories.
4. Make sure the guards are properly installed and securely fastened..
5. For your safety repair should be carried out by a qualified person. Contact the helpline for details of approved service agents.

## **ADDITIONAL SAFETY WARNINGS FOR BRUSH CUTTER**

1. Never use the cutter in rain or damp weather.
2. Do not use the blade above 5 cm (2 inches) from the ground.
3. If the brush cutter starts to vibrate excessively switch off and contact the Helpline for advice.
4. Replace cutting blade if cracked, chipped, or damaged in any way. Be sure the blade is properly installed and securely fastened. Failure to do so can cause serious injury.
5. Keep away from cutting blade. Even after the engine has stopped, the cutting blade will spin for several seconds. Please wait until the engine and cutting blade has fully stopped before putting the machine down or accessing the cutting area.
6. Turn the engine off when not cutting. If you stop cutting for any reason, always stop and switch off the engine. Never leave the machine running and unattended.

## **ADDITIONAL SAFETY WARNINGS FOR GRASS TRIMMER**

1. Never use the trimmer in rain or damp weather. Avoid cutting wet grass as you may slip.
2. Always keep feet and hands well away from the cutting line, take special care when starting.
3. Replace cutting head if cracked, chipped, or damaged in any way. Be sure the line spool is properly installed and securely fastened. Failure to do so can cause serious injury.
4. Make sure all guards, straps, debris shield and handles are properly and securely attached.
5. Keep away from cutting lines. Even after the engine has stopped, the trimmer line will spin for several seconds. Please wait until the engine and cutting head has fully stopped before putting the machine down or accessing the trimming area.
6. Turn the engine off when not trimming. If you stop trimming for any reason, always stop and switch off the engine. Never leave the machine running and unattended.

## **IMPORTANT**

**Read carefully before use**

**Keep for future reference**

**Safe operating practices**

**Training**

Provide the following instruction:

Become familiar with the owner's manual before attempting to operate the equipment.

**Preparation**

**WARNING:**

- a) This hedge trimmer can cause serious injuries. Read the instructions carefully for the correct handling, preparation, maintenance, starting and stopping of the hedge trimmer. Become familiar with all controls and the proper use of the hedge trimmer.
- b) Never allow children to use the hedge trimmer.
- c) Beware of overhead power lines.

- d) Avoid operating while people, especially children, are nearby.
- e) Dress properly! Do not wear loose clothing or jewellery, which can be caught in moving parts. Use of sturdy gloves, non-skid footwear and safety glasses is recommended.
- f) Use extra care when handling fuels. They are flammable and the vapours are explosive. The following points should be observed.
  - Use only an approved container.
  - Never remove the fuel cap or add fuel with the power source running. Allow engine and exhaust components to cool down before refuelling.
  - Do not smoke.
  - Never refuel indoors.
  - Never store the hedge trimmer or fuel container inside where there is an open flame, such as near a water heater.
  - If fuel is spilled, do not attempt to start the power source, but move the hedge trimmer away from the spillage before starting.
  - Always replace and securely tighten the fuel cap after refuelling.
  - If the fuel tank is drained, this should be done outdoors.
- g) If the cutting mechanism strikes any foreign object or the hedge trimmer starts making any unusual noise or vibration, shut off the power source and allow the hedge trimmer to stop. Disconnect the spark plug wire from the spark plug and take the following steps:
  - inspect for damage;
  - check for, and tighten, any loose parts;
  - have any damaged parts replaced or repaired with parts having equivalent specifications
- h) Wear ear protection.
- i) Wear eye protection.

## **Operation**

- a) Stop the engine before
  - cleaning or when clearing a blockage,
  - checking, carrying out maintenance or working on the hedge trimmer,
  - adjusting the working position of the cutting device,
  - leaving the hedge trimmer unattended.

- b) Ensure that the hedge trimmer is correctly located in a designated working position before starting the engine.
- c) While operating the hedge trimmer, always ensure that the operating position is safe and secure, especially when using steps or a ladder.
- d) Do not operate the hedge trimmer with a damaged or excessively worn cutting device.
- e) To reduce fire hazards, keep the engine and silencer free of debris, leaves and excessive lubricant.
- f) Always ensure that all handles and guards are fitted when using the hedge trimmer. Never attempt to use an incomplete hedge trimmer or one fitted with an unauthorized modification.
- g) Always use two hands to operate a hedge trimmer fitted with two handles.
- h) Always be aware of your surroundings and stay alert for possible hazards of which you may not be aware due to the noise of the hedge trimmer.

### **Maintenance and storage**

- a) When the hedge trimmer is stopped for servicing, inspection or storage, shut off the power source, disconnect the spark plug wire from the spark plug and make sure all moving parts have come to a stop. Allow the hedge trimmer to cool before making any inspections, adjustments, etc.
- b) Store the hedge trimmer where the fuel vapour will not reach an open flame or spark. Always allow the hedge trimmer to cool down before storing.
- c) When transporting or storing the hedge trimmer, always fit the cutting device transport guard.

## **SAFETY WARNINGS FOR POLE HEDGE TRIMMER**

- 1. Keep all parts of the body away from the cutter blade. Do not remove cut material or hold material to be cut when blades are moving. Make sure the switch is off when clearing jammed material.** A moment of inattention while operating the pole hedge trimmer

may result in serious personal injury.

2. **Carry the pole hedge trimmer by the handle with the cutter blade stopped.** When transporting or storing the pole hedge trimmer always fit the cutting device cover. Proper handling of the pole hedge trimmer will reduce possible personal injury from the cutter blades.
3. **Hold the machine by insulated gripping surfaces only, because the cutter blade may contact hidden wiring.** Cutter blades contacting a "live" wire may make exposed metal parts of the power tool "live" and could give the operator an electric shock.
4. Check the hedge for foreign objects, e.g. wire fences.
5. Use both hands when operating the pole hedge trimmer. Using one hand could cause loss of control and result in serious personal injury.
6. Keep the machine a sufficient distance away from overhead electrical power lines.



## **WARNING!**

**The saw is intended only for the cutting of wood.**

**The engine group is intended only for use with the recommended cutting equipment.**

**Before using the machine, read the operating instructions carefully to understand all of the content. Failure to follow all instructions listed below may result in fire and/or serious injury.**

**Only use this machine for usage specifically mentioned in this manual.**

## **READ THE INSTRUCTIONS**

## **GENERAL SAFETY WARNINGS**

### **Plan ahead**

1. Read this manual carefully until you completely understand and can follow all safety rules, precautions, and operating instructions before attempting to use the unit.

2. Restrict the use of your saw to adult users who understand and can follow safety rules, precautions, and operating instructions found in this manual.
3. Wear protective gear. Always use steel toed safety footwear with non-slip soles; snug-fitting clothing; heavy-duty, non-slip gloves; eye protection such as non-fogging, vented goggles or face screen; an approved safety hard hat; and sound barriers (ear plugs or mufflers) to protect your hearing. Regular users should have hearing checked regularly as chain saw noise can damage hearing. Secure hair above shoulder length.
4. Keep all parts of your body away from the chain when the engine is running.
5. Keep children, bystanders, and animals a minimum of 10 meters away from the work area. Do not allow other people or animals to be near the chain saw when starting or operating the chain saw. If necessary use warning signs to keep on lookers at a distance.
6. Do not handle or operate a chain saw when you are fatigued, ill, or upset, or if you have taken alcohol, drugs, or medication. You must be in good physical condition and mentally alert. Chain saw work is strenuous. If you have any condition that might be aggravated by strenuous work, check with your doctor before operating a chain saw.
7. Carefully plan your sawing operation in advance. Do not start cutting until you have a clear work area, secure footing, and, if you are felling trees, a planned retreat path. Do not operate the chainsaw near a naked flame or spilled fuel. After re-fueling, always wipe off any spilled fuel, move the chainsaw away from the fueling point before starting the engine.

### **Operate your saw safely**

1. The chain saw must be held with the right hand on the rear handle and the left hand on the front handle. Do not operate a chain saw with one hand. Serious injury to the operator, helpers, bystanders or any combination of these persons may result from one-handed operation. A chain saw is intended for two-handed use. Always maintain a firm foothold. Ensure you are able to STOP the engine quickly if necessary.
2. Operate the chain saw only in a well-ventilated outdoor area.

3. Do not operate saw from a ladder or in a tree.
4. Make sure the chain will not make contact with any object while starting the engine. Never try to start the saw when the guide bar is in a cut.
5. Do not put pressure on the saw at the end of the cut. Applying pressure can cause you to lose control when the cut is completed.
6. Stop the engine before setting the saw down.
7. Do not operate a chain saw that is damaged, improperly adjusted, or not completely and securely assembled. Always replace bar, chain, hand guard, or chain brake immediately if it becomes damaged, broken or is otherwise removed.
8. With the engine stopped, hand carries the chain saw with the muffler away from your body, and the guide bar and chain to the rear, preferably covered with a scabbard.

### **Physical condition**

You must be in good physical condition and mental health and not under the influence of any substance (drugs, alcohol), which might impair vision, dexterity or judgment.

### **Proper clothing**

Clothing must be sturdy and snug-fitting, but allow complete freedom of movement. Avoid loose-fitting jackets, scarfs, neckties, jewelry, flared or cuffed pants, or anything that could become entangled with the saw or brush.

Protect your hands with gloves when handling saw and saw chain. Heavy-duty, nonslip gloves improve your grip and protect your hands.

Good footing is most important in chain saw work.

Wear sturdy boots with nonslip soles. Steel-toed safety boots are recommended.

Proper eye protection is a must. Non-fogging, vented goggles and a face screen is recommended. Their use reduces the risk of eye and facial injury.

Wear an approved safety hard hat to protect your head. Chain saw noise may damage your hearing.

Always wear noise protection equipment (ear plugs or ear muffs) to protect your hearing.

Continual and regular users should have their hearing checked regularly.

## MAINTAIN THE SAW IN GOOD WORKING ORDER

1. Have all chain saw service performed by a qualified service dealer with the exception of the items listed in the maintenance section of this manual. For example, if improper tools are used to remove or hold the flywheel when servicing the clutch, structural damage to the flywheel can occur and cause the flywheel to burst.
2. Make certain the saw chain stops moving when the throttle trigger is released.

### Carburetor adjustment

1. Never modify your saw in any way.
2. Keep the handles dry, clean, and free of oil or fuel mixture.
3. Keep fuel and oil caps, screws, and fasteners securely tightened.
4. Use only qualified accessories and replacement parts as recommended.

### Handle fuel with caution

1. Do not smoke while handling fuel or while operating the saw.
2. Eliminate all sources of sparks or flame in the areas where fuel is mixed or poured. There should be no smoking, open flames, or work that could cause sparks. Allow engine to cool before refueling.
3. Mix and pour fuel in an outdoor area on bare ground; store fuel in a cool, dry, well ventilated place; and use an approved, marked container for all fuel purposes. Wipe up all fuel spills before starting saw.
4. Move at least 3 meters from fueling site before starting engine.
5. Turn the engine off and let saw cool in a non-**combustible** area, not on dry leaves, straw, paper, etc. Slowly remove fuel cap and refuel unit.
6. Store the unit and fuel in an area where fuel vapors cannot reach sparks or open flames from water heaters, electric motors or switches, furnaces, etc.



## **POLE SAW SAFETY WARNINGS**

1. Do not use the machine when the operator is tired, ill or under the influence of alcohol or other drugs.
2. To reduce the risk, please keep bystanders at a safe distance from the machine during its operation.
3. Be aware of the dangerous of operating positions, as well as the risk of being struck by falling branches or branches that, having hit the ground, rebound, the operator may be struck by falling branches or by those that rebound after hitting the ground. Remove the branches in sections.
4. Keep a firm footing and balance during operating. Use the harness provided.
5. Keep the machine a sufficient distance away from overhead electrical power lines.

# COMPONENT LIST

1. STEP GUARD	11. SDS CHOKE LEVER
2. AUXILIARY HANDLE	12. FUEL TANK CAP
3. IGNITION SWITCH ON/OFF	13. AIR FILTER COVER
4. THROTTLE INTERLOCK	14. FUEL TANK
5. MAIN HANDLE GRIP	15. THROTTLE TRIGGER
6. HARNESS RING	16. CLAMP
7. RECOIL STARTER HANDLE	17. LOCKING KNOB
8. BACK COVER	18. HARNESS
9. SPARK PLUG CONNECTOR	19. LEG PAD
10. PRIMER	20. QUICK-RELEASE MECHANISM

## BRUSH CUTTER/GRASS TRIMMER

21. TRIMMER HEAD	27. SOFT CAP
22. GEAR BOX	28. BUMPER
23. CUTTING OR TRIMMING GUARD	29. CUTTING BLADE
24. LINE CUTTER	30. BACKING FLANGE
25. BRUSH CUTTER/GRASS TRIMMER SHAFT	31. LOCKING FLANGE
26. ROUND BUTTON	32. SAFETY NUT

## POLE HEDGE TRIMMER ATTACHMENT

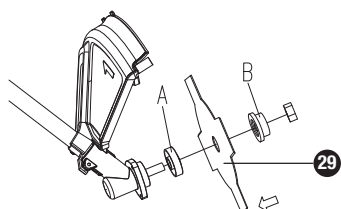
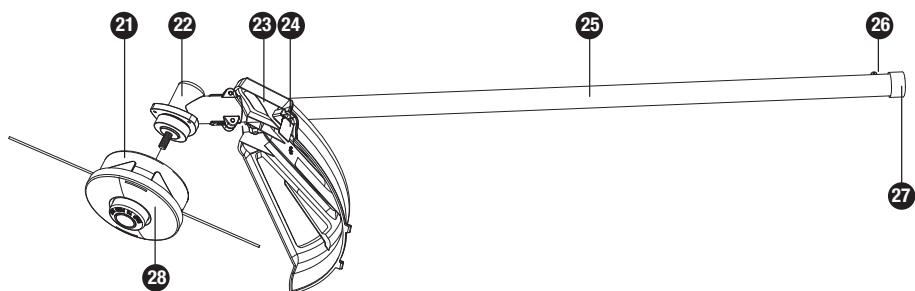
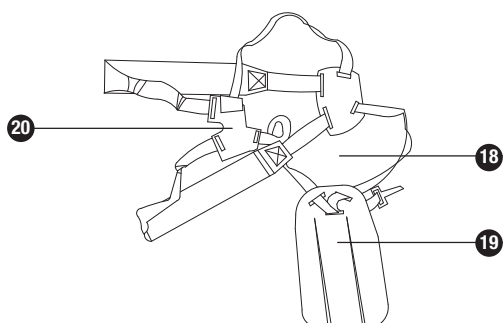
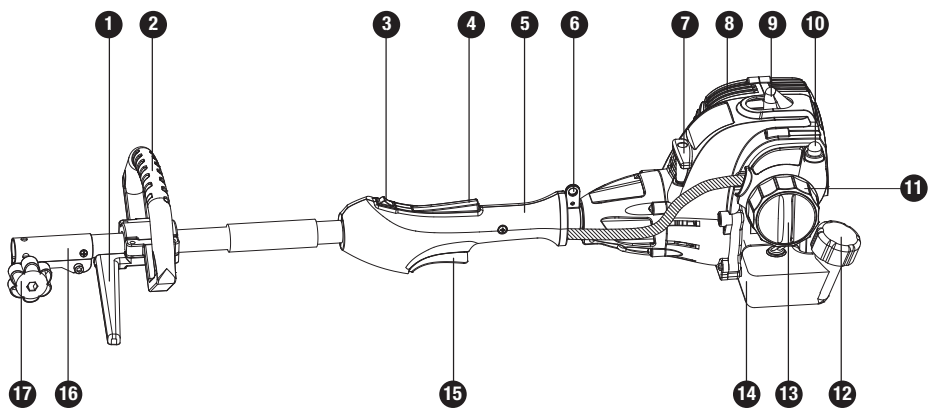
33. BLADE PROTECTION SHEATH	37. HEDGE TRIMMER SHAFT
34. HEDGING BLADE	38. HANDLE FOR ADJUSTING THE CUTTING BAR
35. GEAR BOX	
36. LOCKING LEVER	

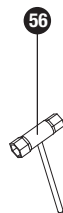
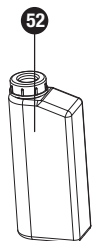
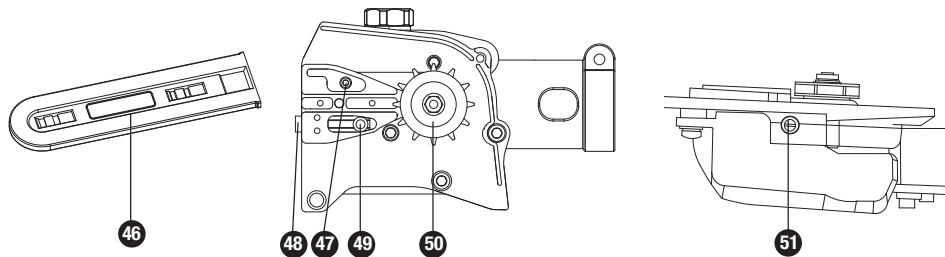
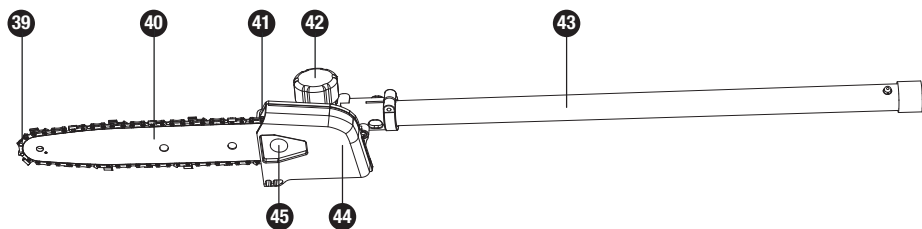
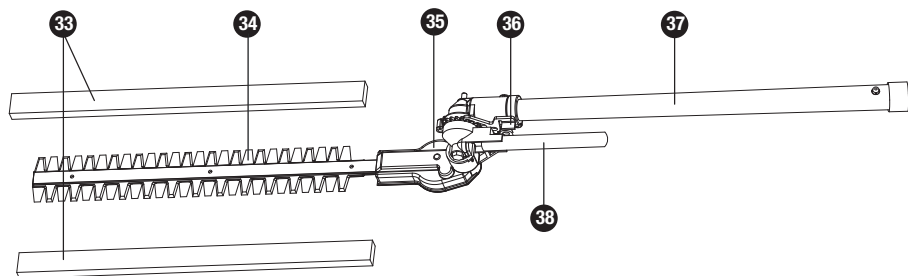
## POLE CHAIN SAW ATTACHMENT

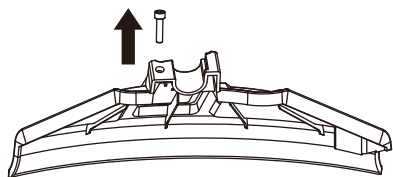
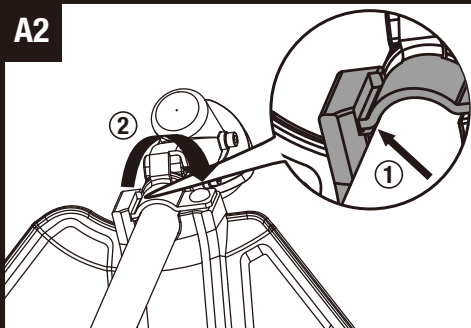
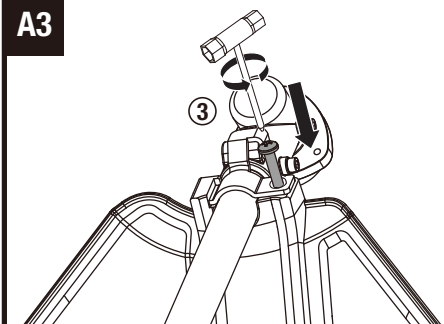
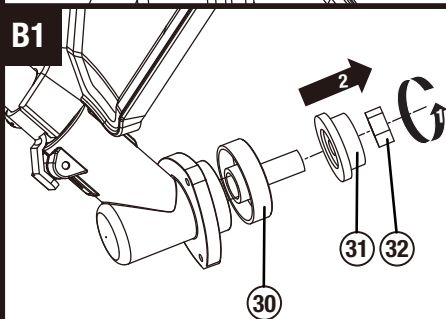
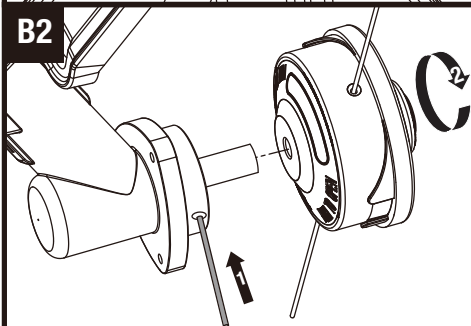
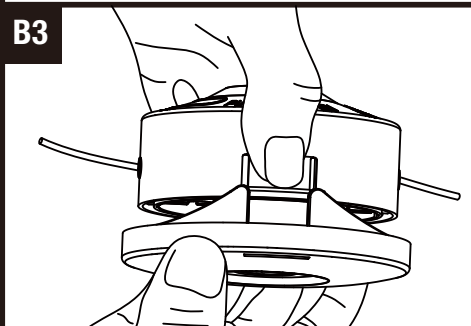
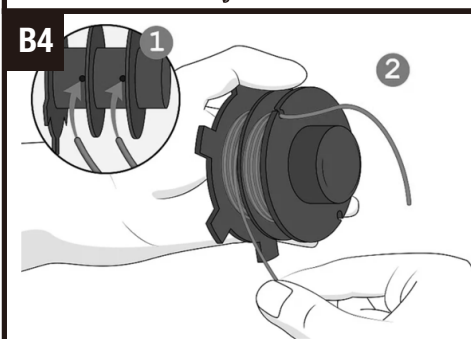
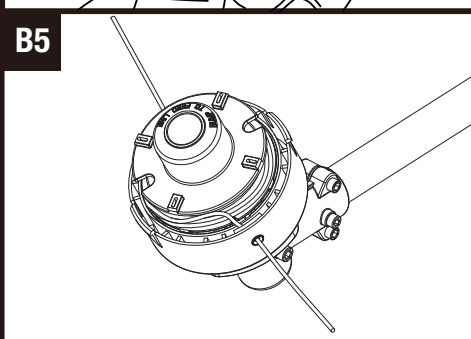
39. SAW CHAIN	46. GUIDE BAR COVER
40. GUIDE BAR	47. BOLT
41. CHAIN OIL TANK	48. TENSION SCREW
42. CHAIN OIL TANK CAP	49. TENSION PIN
43. CHAIN SAW SHAFT	50. DRIVE SPROCKET
44. COVER	51. LUBRICATING OIL ADJUSTMENT NUT
45. LOCKING NUT	

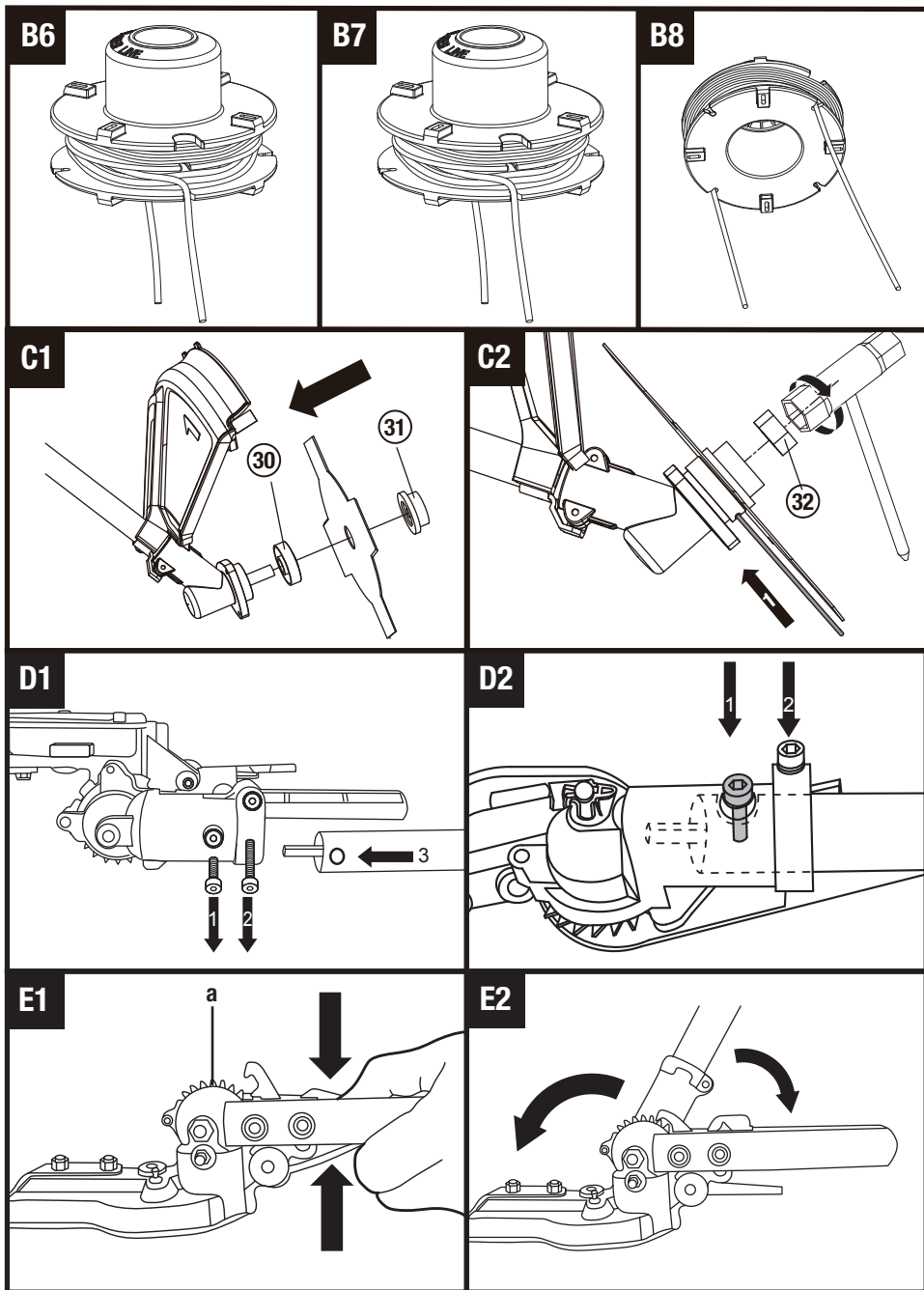
## TOOLS

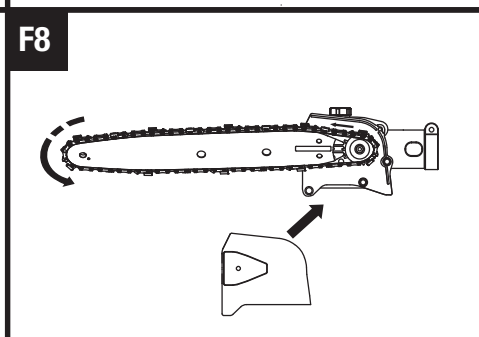
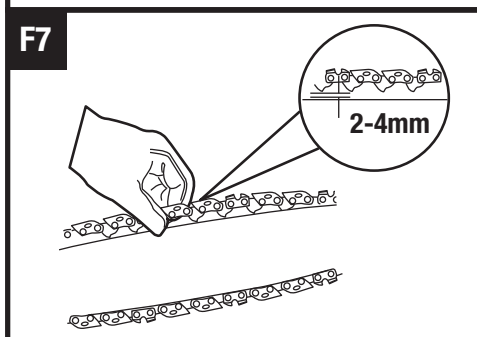
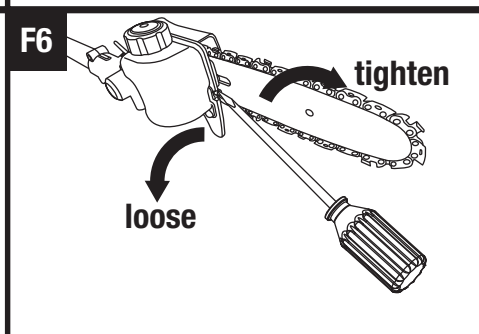
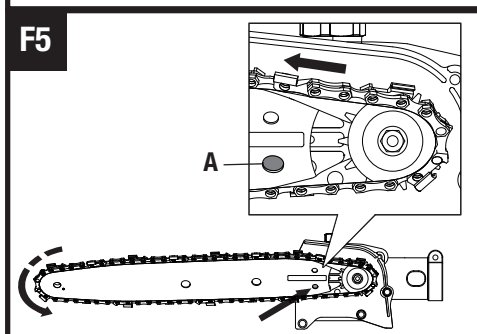
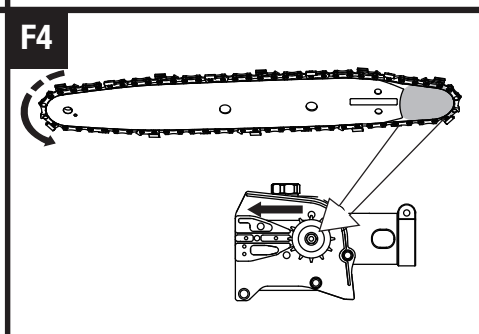
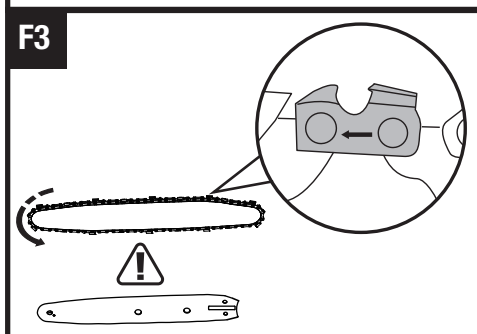
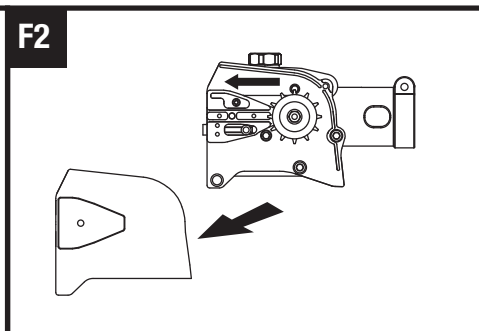
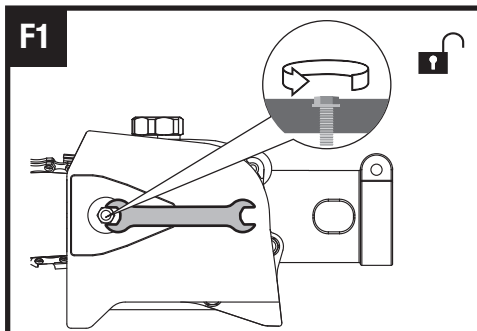
52. MIXTURE FUEL TANK	55. SPINDLE LOCK ROD
53. SLOTTED SCREWDRIVER	56. SOCKET SPANNER
54. OPEN-END WRENCH	57. HEX KEY

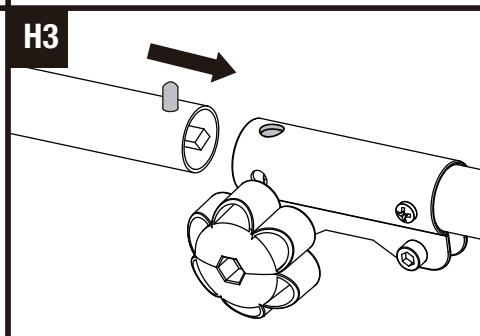
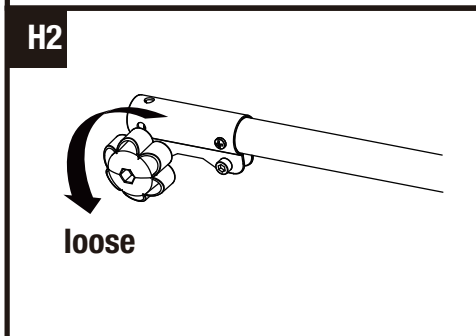
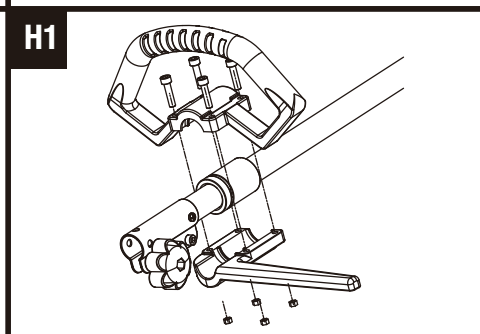
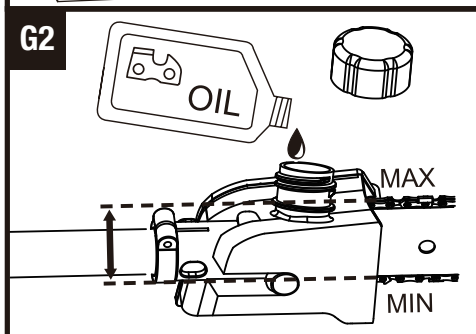
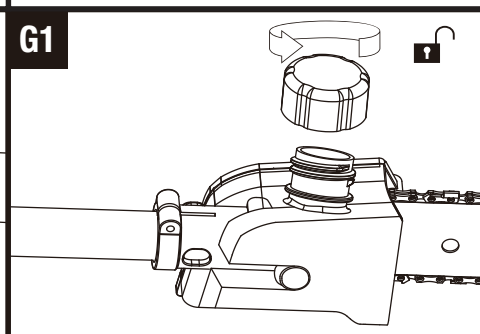
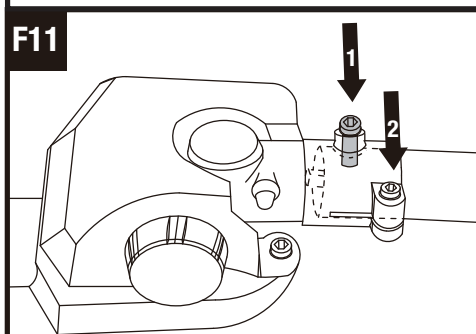
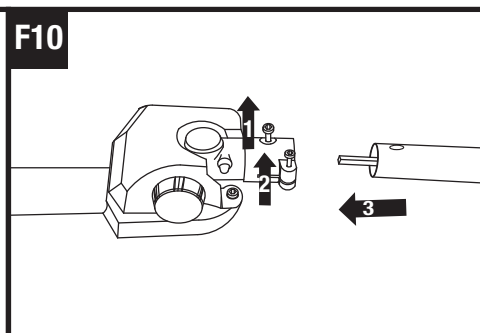
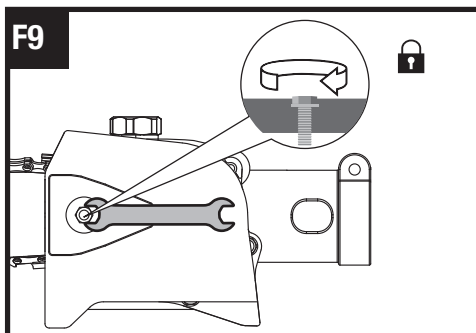




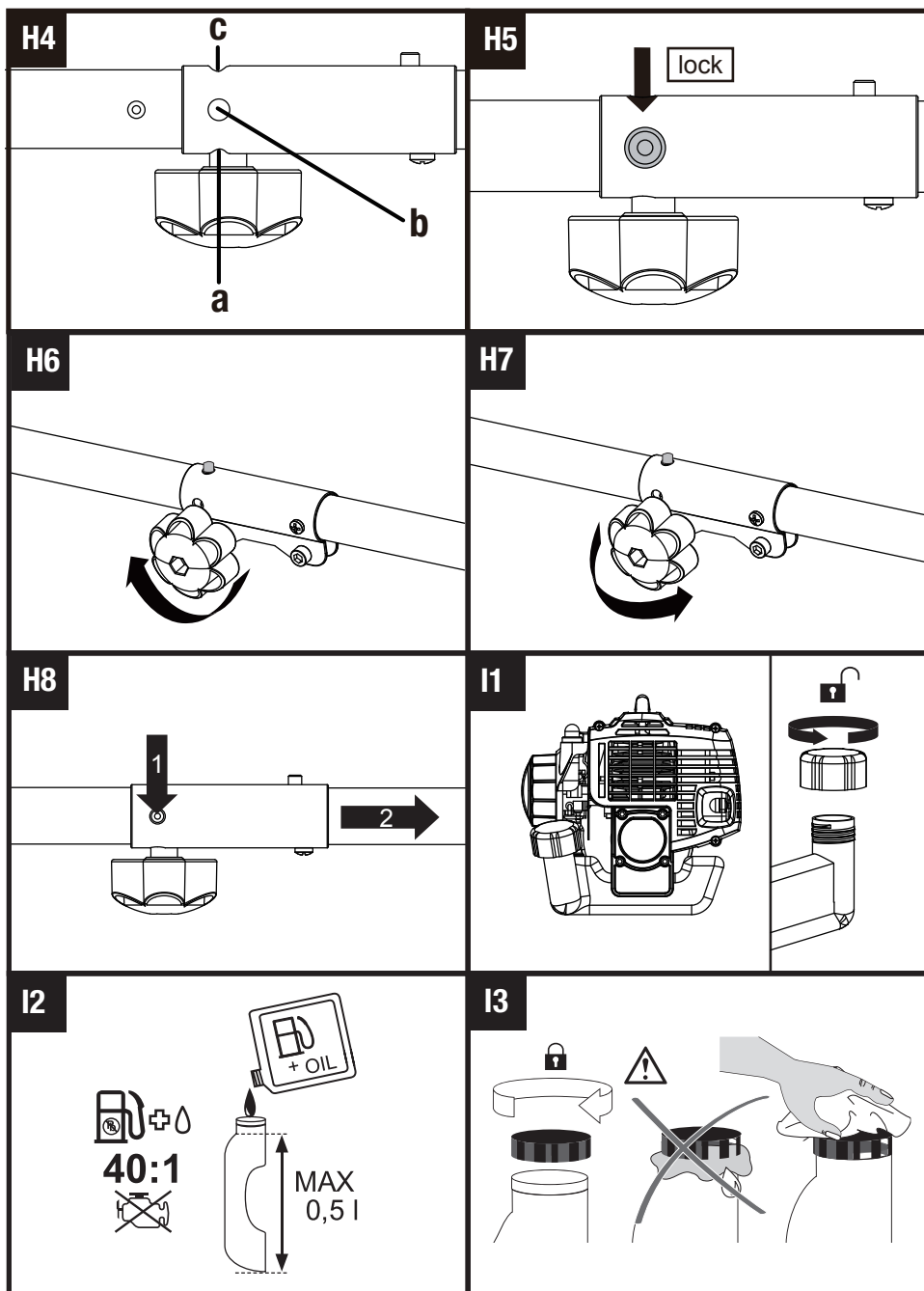
**A1****A2****A3****B1****B2****B3****B4****B5**

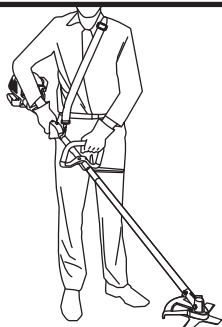
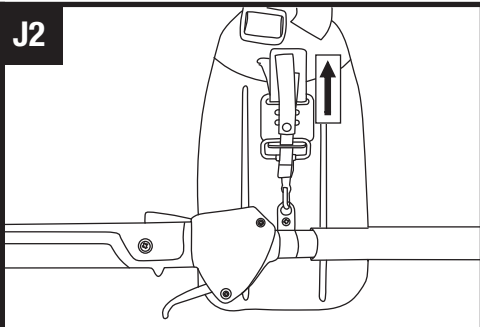
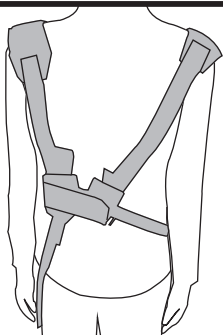
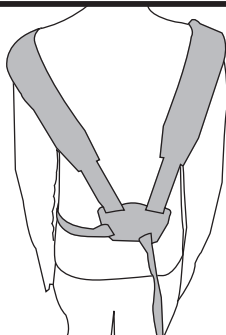
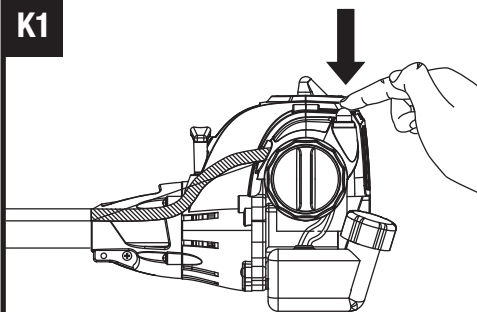
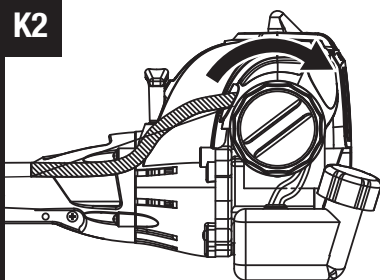
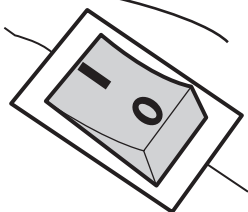
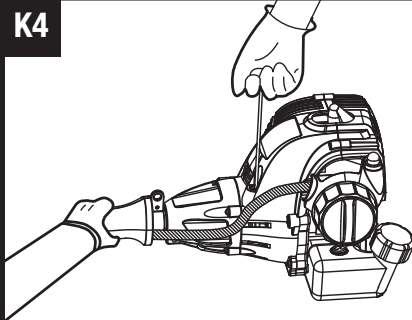


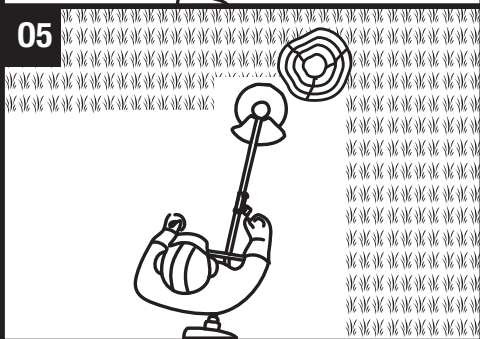
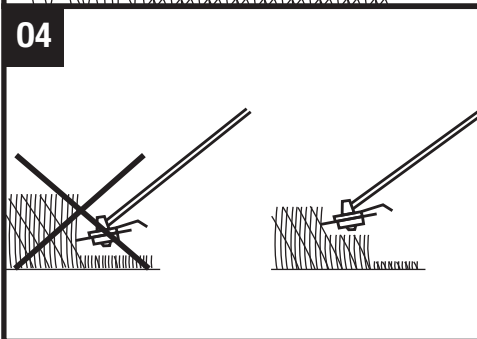
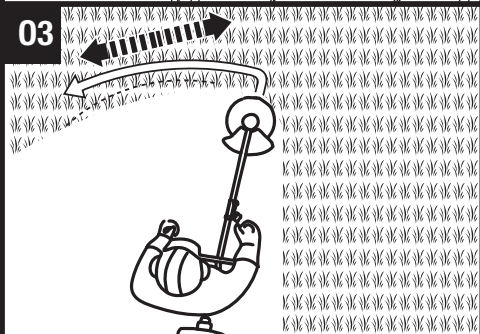
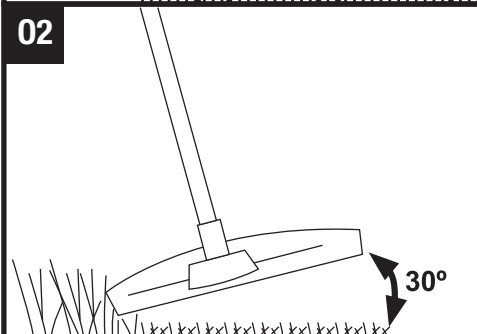
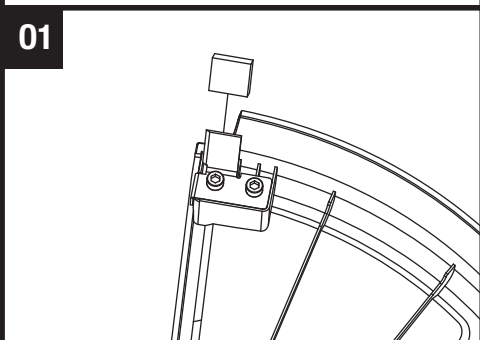
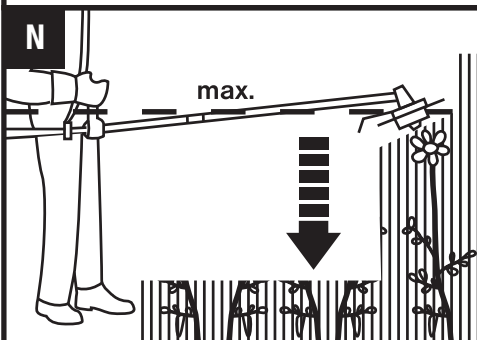
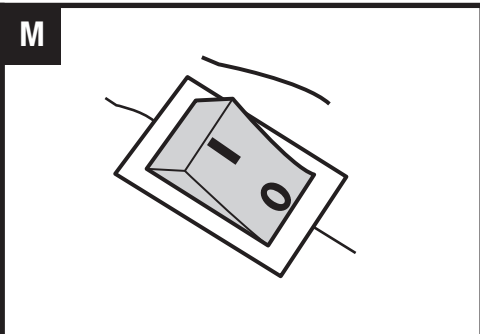
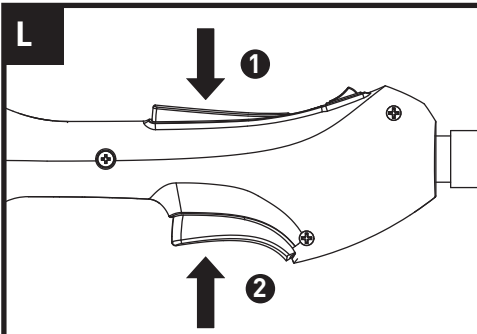


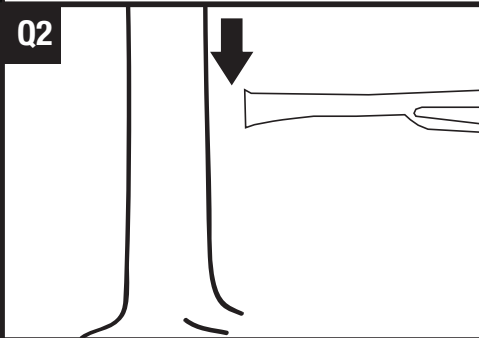
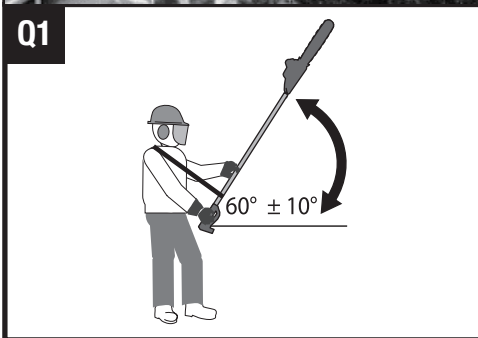
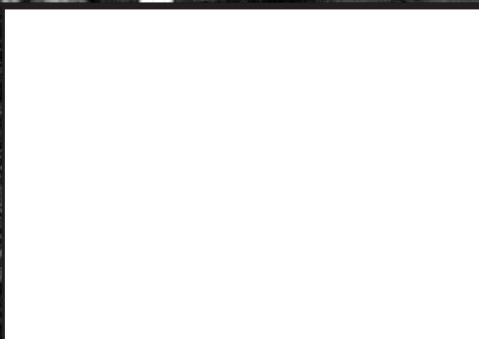
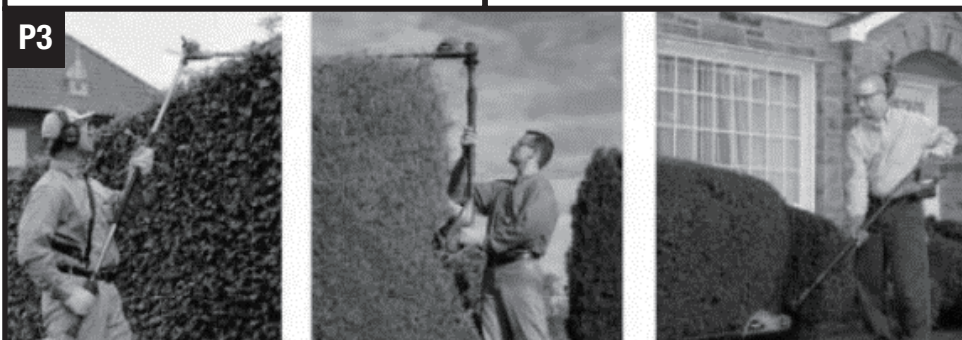
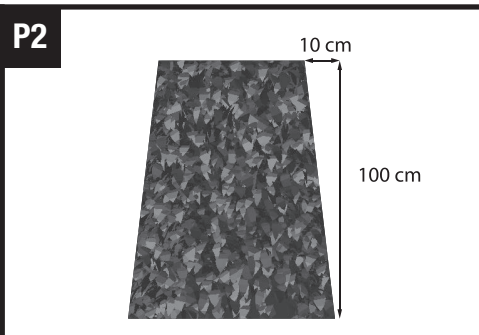
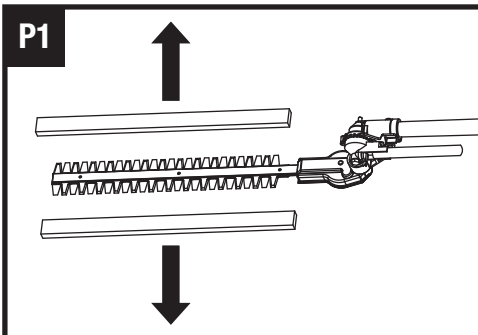


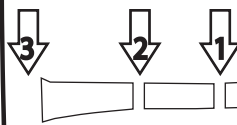
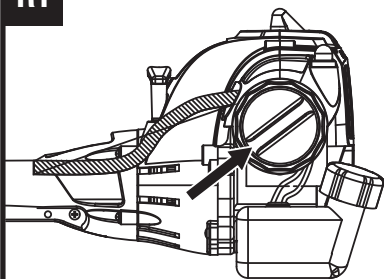
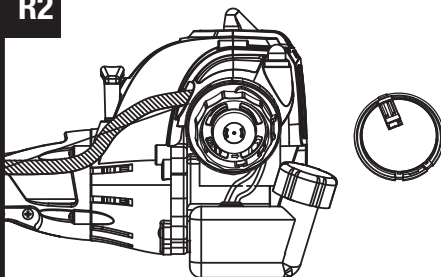
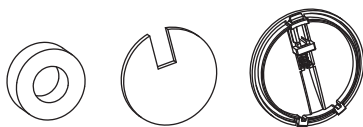
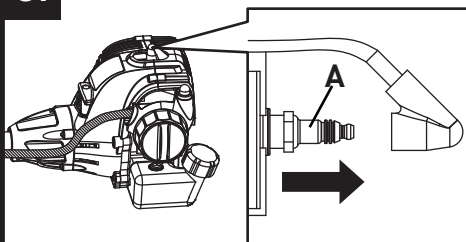
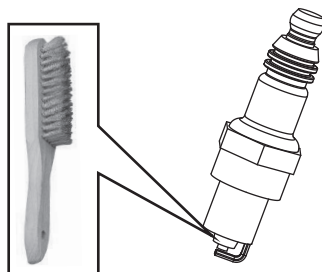
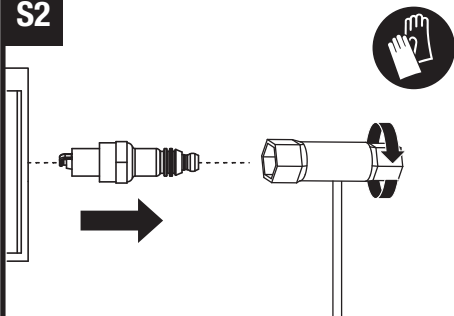


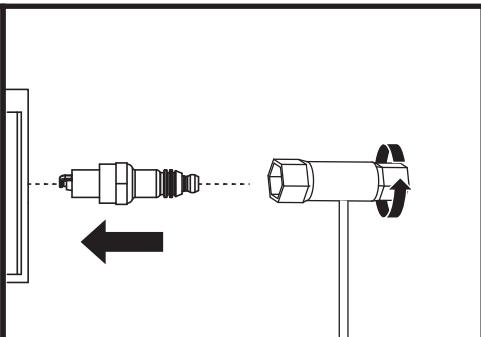
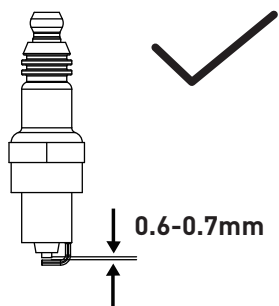
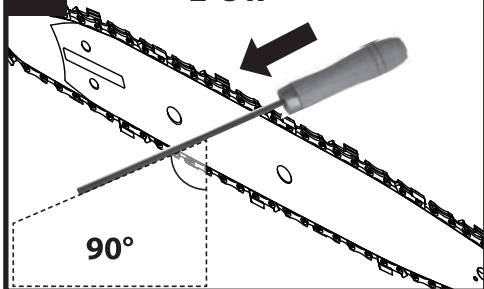
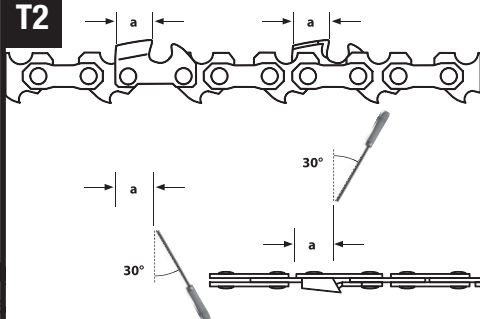


**J1****J2****J3****J4****K1****K2****K3****K4**





**Q3****Q4****R1****R2****R3****S1****S2**

**S3****T1****2-3 x****T2**

# SYMBOLS



To reduce the risk of injury, please read the instruction manual



Warning



Wear ear protection



Wear eye protection



Wear dust mask



Wear protective gloves



Wear protective footwear



Wear protective clothing



The distance between the machine and bystanders shall be at least 15 m



Beware of thrown objects



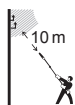
Beware of blade thrust



Keep hands away from blade



Wear head protection



Warning of danger from overhead electric-power lines



Choke open



Choke close



Engine -manual starter



Chain oil fill/oil pump



Continuously variable



Naked flames in the work area, around the product and in the vicinity of flammable materials are prohibited



Do not smoke in the work area, around the product and in the vicinity of flammable materials



This product produces noxious exhaust fumes. If the product is not used properly, these fumes can lead to poisoning, a loss of consciousness or death



Only use petrol/oil mixture with a ratio of 40:1. Do not use any other mixture ratio. Always switch the product off and let it cool down, before refueling it.



Warning: Hot surface



## TECHNICAL DATA

<b>Engine</b>	
Engine type	two-stroke, air cooled gasoline engine
Engine displacement	30cc
Engine power	760W
Engine idle speed	2900/min
Volume (fuel tank)	600ml
Fuel (petrol/oil)	40:1
<b>Brush cutter</b>	
Max engine speed	8000/min
Max cutting diameter	Ø23cm
<b>Grass trimmer</b>	
Line length	2*2.5m
Max cutting diameter	Ø46cm
<b>Pole Hedge trimmer</b>	
Blade length	40cm
Cutting length	38cm
Max cutting diameter	22mm
<b>Pole Chain saw</b>	
Chain pitch	3/8"
Chain type	10"
Bar length	25cm
Bar type	AL10-39-507P

## ACCESSORIES

Socket spanner for spark plug	1
Auxiliary handle	1
Harness	1
Blade for brush cutting	1
Pruner attachment	1
Grass trimmer attachment	1
Chain saw attachment	1
Safety guard	1

We recommend that you purchase your accessories listed in the above list from the same store that sold you the tool. Refer to the accessory packaging for further details. Store personnel can assist you and offer advice.

## NOISE DATA

A weighted sound pressure	$L_{pA} = 95 \text{ dB(A)}$
A weighted sound power	$L_{WA} = 115 \text{ dB(A)}$
	$K_{WA} = 3 \text{ dB(A)}$
<b>Wear ear protection.</b>	



## VIBRATION INFORMATION

Typical weighted vibration, front handle: $a_h = 7.6 \text{ m/s}^2$ ; rear handle: $a_h = 5.9 \text{ m/s}^2$
Uncertainty $K = 1.5 \text{ m/s}^2$

**WARNING:** The vibration emission value during actual use of the power tool can differ from the declared value depending on the ways in which the tool is used dependant on the following examples and other variations on how the tool is used:  
How the tool is used and the materials being cut or drilled.  
The tool being in good condition and well maintained  
Using the correct accessory for the tool and ensuring it is sharp and in good condition.  
The tightness of the grip on the handles and if any anti vibration accessories are used.  
And the tool is being used as intended by its design and these instructions.

**This tool may cause hand-arm vibration syndrome if its use is not adequately managed**

**WARNING:** To be accurate, an estimation of exposure level in the actual conditions of use should also take account of all parts of the operating cycle such as the times when the tool is switched off and when it is running idle but not actually doing the job. This may significantly reduce the exposure level over the total working period.  
Helping to minimise your vibration exposure risk.  
ALWAYS use sharp chisels, drills and blades  
Maintain this tool in accordance with these instructions and keep well lubricated (where appropriate)  
If the tool is to be used regularly then invest in anti vibration accessories.  
Plan your work schedule to spread any high vibration tool use across a number of days.

# OPERATION INSTRUCTIONS



**WARNING! Read all instructions carefully. Do not connect the spark plug before it is completely assembled. Always use gloves during assembly.**

## INTENDED USE

1. This 4 in 1 petrol multi-tool is designated with an engine displacement of 30cc.

Depending on the attached accessory this product is intended to be used as:

- a). Brush Cutter: With the cutter blade attached the product is intended to cut heavier weeds, brush and similar vegetation.
  - b). Grass trimmer: With the line spool attached the product is intended to cut smaller types of weed, lawn grass or similar soft vegetation. It must not be used to work on unusually thick, dry or wet grass, e.g. pasture grass, or to shred leaves.
  - c). Pole hedge trimmer: With the hedge trimmer blade attached the product is intended for trimming wide and high hedges, bushes and shrubs.
  - d). Chain saw: With the saw chain/guide bar assembly attached the product is intended for cutting limbs. The product may only be used with the guide bar/saw chain combination stated in these instructions. It is not permitted to use other types or sizes.
2. The product must not be used for cutting other materials, such as plastic, stone, metal or wood that contains foreign objects and must not be used outside of domestic premises.
3. Observe the technical data for the maximum cutting capacity according to the application (see "Technical Data"). Do not cut plants exceeding the stated maximum capacity.

## BEFORE OPERATION

### Cutting or Trimming Guard Assembly (See Fig. A1-A3)

1. Remove the pre-assembly screw on the safety guard.
2. Align the screw location hole, and then insert the safety guard into the tube.
3. Tighten the screw using screwdriver

### Grass Trimmer Assembly and Disassembly (See Fig. B1-B2)

1. Make sure that the cutting / trimming guard have been attached properly.
2. Screw the nut clockwise and move flange (31) and nut (32).
3. Rotate the backing flange until its hole is aligned with the notch in the gear head.
4. Insert the spindle lock rod into the hole to lock the spindle.
5. Screw the trimmer head on the spindle anti-clockwise.
6. Reverse the above order of steps to disassemble the grass trimmer.

### **Grass trimmer spool replacement (See Fig. B3-B6)**

- 1) Hold the trimmer spool and pull out the cover.(B3)
- 2) Removing the spool from its housing.
- 3) Inserting 15mm of line into one of the holes in the upper section of the spool and wind line in the direction of the arrows on the top of the spool .
- 3) Taking two lines of approximately 2.5m.
- 4) Rewinding the replacement grass trimmer line onto the spool in the same direction for the upper and lower feeds as shown fig B5.
- 5) Lining up the tails with the holes in the casing whilst still secured in the plastic notch on each side.
- 6) Locating the spool over the spring and push it down into the housing once it is in place you can release the line from the plastic notches by pulling on the line. This will free it and enable the bump feed mechanism to operate.
- 7) Replacing the spool cover back on top of the housing and click it into place.

#### **NOTE:**

1. Use the notches in the plastic to secure each of the lines as you wind them onto the spool in image B6 and B7.
2. You will then end up with a spool as in image B8.

### **Brush Cutter Assembly and Disassembly (See Fig. C1-C2)**

1. Put the backing flange (30) onto the spindle.
2. Fit the blade to the spindle. The rotational direction indicated on the guard and that of the blade must agree. Ensure that the blade sits securely on the extruded ring on the backing flange.
3. Put the locking flange (31) onto the blade. The pins must engage in the hole on the backing flange.
4. Insert the spindle lock rod into the hole to lock the spindle. Screw the safety nut (32) by use the spark plug wrench anti-clockwise. Remove the spindle lock rod.
5. Reverse the above order of steps to disassemble the brush cutter.

### **Pole Hedge Trimmer Shaft Assembly (See Fig. D1, D2)**

1. Loosen the two bolts on the joint and then align the hole of the hedge trimmer shaft to the bolt.
2. Insert the shaft and secure the connection with the bolts by using the hex key.

### **Pole Hedge Trimmer Shaft Adjustment (See Fig. E1, E2)**

1. Depress the locking levers with one hand and hold them in position.
2. Rotate the shaft using the cutting bar adjustment handle with the other hand.

3. Release the locking levers when the desired angle is adjusted. Ensure that the hook engaged between two teeth of the tooth wheel (a). Make sure the engages automatically a locking levers and the joint is secured.

### **Pole Chain Saw Assembly (See Fig. F1-F11)**

1. Loosen the locking nut, and take off the cover. (See Fig. F1, F2)

2. Assemble the saw chain into the guide bar. (See Fig. F3)

3. Assemble the guide bar into the chain saw shaft head. (See Fig. F4, F5)

Warning: Ensure that chain tensioning pin is positioned in hole (A) on the blade. The pin must be completely inserted into the hole.

4. Turn the tension screw clockwise until the chain "tie straps" are just touching the bottom edge of the guide bar. Check the chain tension using one hand to lift the saw chain against the weight of the product. The correct chain tension is achieved when the saw chain can be lifted by approx. 2-4mm(10N) from the guide bar in the centre. (See Fig. F6, F7)

5. Assemble the cover into the shaft head, and rotate the locking nut to tighten the cover completely. (See Fig. F8, F19)

6. Loosen the two bolts on the joint and then align the hole of the chain saw shaft to the bolt. (See Fig. F10)

7. Insert the shaft and secure the connection with the bolts by using the hex key. (See Fig. F11)

### **Chain Lubrication (See Fig. G1, G2 )**

Never operate your pruner without chain lubrication. If the chain is run dry, the whole cutting attachment will be irretrievably damaged within a very short time. A full tank will last for approx. 10 minutes of continuous operation. Check the oil level in good time.

### **NOTE:**

Most lubrication oil is suitable to this machine.

### **Auxiliary Handle Assembly (See Fig. H1)**

Place the auxiliary handle onto the shaft from the top, align with the anti-vibration circle on the shaft, screw into four holes, and tighten it with the hex key.

### **Shaft Assembly and Disassembly (See Fig. H1-H8)**

1. Loosen the clamp by turning the clamp knob counterclockwise.

2. Remove the soft cap, and insert the drive shaft into the tube.

**Note:** There are three guide recesses (A&B&C) on the tube to insert the shaft for different working positions.

3. Align the shafts and insert the front shaft into the rear shaft.

4. Position the tube locking/release button (a) into the guide recess (b) of the clamp.
5. Ensure the locking button is engaged with the location hole in the clamp.
6. Tighten the knob securely by turning clockwise.
7. Loosen the clamp by turning the clamp knob counterclockwise.
8. Push the tube locking/release button and pull the shaft out.

### **Fuel Tank Filling (See Fig. I1-I3)**

1. Prepare the petrol/oil mixture in a clean canister intended for use with petrol.
2. First fill in the petrol to the lower scale mark, then fill in the oil to the upper scale mark, then shake the canister.
3. Remove the filler cap and fill the fuel mixture into the petrol tank. Wipe spilled fuel from around the filler opening and replace the filler cap.

### **Attaching Harness (See Fig. J1-J4)**

1. Put on the harness.
2. Adjust the harness so it fits tightly.
3. Fix the spring clip onto the lifting ring on the shaft tube of the equipment.
4. Adjust the harness so the spring clip is around 10cm below the hip.

**Note:** In case of emergency, pull the rope of the quick release mechanism. The metal locking bar will be released from the securing clip automatically because of the weight of the machine, and the machine will drop away from you.

## **OPERATION**

### **STARTING THE MACHINE**

**NOTE:** It is normal for blue smoke to emit from a new 2-stroke engine during and after first use.

**WARNING! Avoid contact with exhaust; a hot exhaust can cause serious burn!**

1. Place the product on a flat, stable surface. Ensure that the attachment in use does not touch the ground or any objects.
2. Press the primer 5-6 times until the fuel is visible. (See Fig. K1)
3. Rotate the SDS choke lever clockwise to the shown position (only for cold start). (See Fig K2)

**Warning:** If the engine is warm, leave the SDS choke lever in the original position, do not rotate it.

4. Set the ignition switch to the "I" position. (See Fig. K3)

5. Hold the product stable and pull the recoil starter handle firmly; repeat until the engine starts. (See Fig. K4) Allow the recoil starter rope to return slowly and controlled after each pull!

**WARNING!** Make sure that the cutting blade is not touching the ground or other objects when starting the product!

6. Allow the product to run at idle speed for 10 to 15 seconds to let it warm up.

7. Once the engine is running correctly, carefully lift the product and securely hold it by its handles.

**NOTE:** During idle running the cutting blade should not move. Contact a qualified technician if you find that the cutting blade is moving.

### **OPERATION (See Fig. L)**

1. Press the throttle interlock, hold it in position and then press the throttle trigger to engage the attachment.

2. Release the throttle trigger, this tool will be set at idle speed status.

### **STOPPING THE MACHINE (See Fig. M)**

1. Release the throttle trigger and let the product run at idle speed for 10-15 seconds.

2. Set the ignition switch to the "O" position.

**WARNING!** The attachment will continue to move for some time even after the engine has been switched off! Wait until the attachment has come to a complete stop before placing the product on the ground!

## **GENERAL BEHAVIOUR**

1. Check the product as well as accessories for damage before each use. Do not use the product if it is damaged or shows wear.

2. Double check that accessories, safety guards and blades are properly fixed.

3. Always hold the product by its handles. Keep the handles dry to ensure safe support.

4. Ensure that the air vents are always unobstructed and clean. Clean them if necessary with a soft brush. Blocked air vents may lead to overheating and damage the product.

5. Switch the product off immediately if you are disturbed while working with it and when other people enter the working area. Always let the product come to complete stop before putting it down.

6. Do not overwork yourself. Take regular breaks to ensure you can concentrate on the work and have full control over the product.

## Brush Cutter

**WARNING!** To avoid hazards never cut heavier weeds, brush and similar vegetation with a thickness of over 20mm. Avoid contact with stones, wire, glass etc. that may cause injury to the user! Inspect the blade regularly for damage, cracks or breaks! Always replace a damaged blade!

**WARNING!** When working with the cutter blade there is always a risk of kickback if the cutting head comes into contact with a hard object! Kickback will cause the sudden stalling of the cutting head, which in turn results in the cutting head being forced in the opposite direction to the rotation of the cutter blade! Ensure that you retain a firm grip with both hands at any sign of such kickback, pay attention and retain a firm stance to avoid injuries!

- a) Use the cutting blade and guard to cut weeds, brush, small trees and similar vegetation with a thickness of up to 20mm.
- b) Never hold the unit higher than your hip. Work cautiously. The higher you hold the unit the bigger is the risk of thrown objects or clippings. (See Fig. N)
- c) Plunge the blade from above when cutting rank growth and undergrowth.
- d) Move the blade close over the ground to cut young trees or grass.

## Grass Trimmer

**Note:** Remove the line cutter protector before using the grass trimmer. (See Fig. O1)

- a) Use the trimmer head and trimming guard to cut small weeds, grass or similar soft vegetation.
- b) Hold the product with sufficient distance to your body.
- c) Pay attention to your posture. Stand upright, do not lean forward.
- d) Hold the trimmer head just above the ground at an angle of about 30°. (See Fig. O2)
- e) Move the product with slow and regular horizontal movements from the right to the left and then lead it back to starting point before trimming the next row. (See Fig. O3)
- f) Clean the cutting means regularly. Stop the engine, switch the petrol brush cutter off and unplug the spark plug connector before checking.
- g) Trim in steps when the grass is very high. Do not cut the total height in once. (See Fig. O4)

## TIPS (See Fig. O5)

- a) For best results, do not cut wet grass because it tends to stick to the cutting means and guard, prevents proper discharge of grass clippings, and could cause you to slip and fall.
- b) Pay special attention when performing the work close to trees and bushes. The cutting means can damage sensitive bark, and damage fence posts.

## Pole Hedge Trimmer

**Note:** Remove the blade protection sheath before using the pole hedge trimmer. (See Fig. P1)



**WARNING!** During cutting work, ensure that no contact is made with objects, e.g. such as wire fencing or main plant stems. This may result in damage to the cutter bar.

- a) Always hold the equipment firmly in both hands, with one hand on the round handle and the other hand on the tubular shaft. Thumbs and fingers must surround the handles firmly.
- b) Make sure that the position of the harness is comfortable. That makes it easier to hold the hedge trimmer.
- c) If the blade becomes jammed by solid objects, switch off the equipment immediately then remove the object.
- d) Avoid overstraining the equipment during work.

### **Trimming tips (See Fig. P2)**

- a) Use loppers to cut thicker branches first.
- b) The double-sided blade bar lets you cut in either direction or to move to and fro from side to side.
- c) When cutting down vertically, move the appliance evenly forward or up and down in a bow like motion.
- d) When cutting horizontally, move the appliance in a crescent like motion towards the edge of the hedge to allow twigs to drop down.
- e) Attach strings to help you cut long straight lines.

### **Trimming ornamental hedges (See Fig. P3, P4)**

Hedges should be trimmed to a trapezoid shape in order to prevent the bottom twigs from becoming bare. This is imitating natural plant growth and the best way of letting the hedges thrive. Since trimming just affects the new shoots, the branches will grow more densely and perfectly screen your garden from sight.

- a) First of all trim down the sides of the hedge, moving the trimmer along the direction of growth, i.e. from the bottom upwards. Trimming from top to bottom will make thinner twigs to move outwards, thus creating bald patches or holes.
- b) Then go along the top edge and trim it straight, round or to a roof shape.
- c) Start trimming the plants to shape even if they are still young. Mind not to cut into the main sprout until the hedge has reached its planned height, though. All other sprouts are cut to half their length.

### **Pole Chain Saw**

- a) Observe the specified working angle  $60^{\circ} \pm 10^{\circ}$ , in order to guarantee safe working. (See Fig. Q1)
- b) Do not use the high pruning saw when standing on a ladder or in an unsafe position.
- c) Do not be tempted to make unconsidered cuts. Doing so may endanger both yourself and others.
- d) Children must be supervised to ensure that they do not play with the equipment.

## **Sawing techniques**

Be thoroughly aware of the danger of rebounding branches.

Sawing Off Small Branches (See Fig. Q2)

Set your saw cut from top to bottom, as illustrated.

Be aware of early breaking of the branch if you have underestimated the size and weight.

Be completely aware of the falling cut material.

## **Sawing Off Larger Branches (See Fig. Q3)**

For controlled sawing of larger branches, first select a relief cut. This is made from below.

Saw a notch in the lower third of the branch.

The actual length cut is again made from the top, as far as possible in line with the first cut so that the two cuts meet.

## **Sawing Off Parts (See Fig. Q4)**

For large/long branches, sawing off in parts is recommended.

This is the only way to safely ensure the point of impact of the cut material.

Clear away from the area in which you are standing any parts that have already been cut and are lying on the ground.

# **MAINTENANCE**

## **Cleaning the air filter (See Fig. R1, R2, R3)**

1. Remove the air filter cover.
2. Open the air filter.
3. Take out two sponges and clean with soap and water. Do not use petrol for cleaning! Allow to dry naturally.
4. Reverse the above order of steps to replace the filter.

## **Replacing/adjusting the spark plug (See Fig. S1-S3)**

1. Turn off the unit.
2. Pull the spark plug connector off the spark plug (A).
3. Use a spark plug wrench to remove the spark plug by turning it anticlockwise.
4. Use a feeler gauge (available in specialized shops) to check the spark gap. Electrodes to be about 0.75 mm apart
5. Adjust the gap by carefully bending the bow of the spark plug as necessary.
6. Use a steel brush to clean the spark plug.
7. After cleaning and adjustment, put the spark plug back in or replace a damaged plug with a new one.
8. Put the ignition cable back on.

## **Resharpener of the saw chain (See Fig. T1, T2)**

Leave the resharpener of a saw chain to an expert or proceed according to the

instructions of your saw chain sharpener. Resharpener a saw chain takes some practice. If in doubt, replacing the saw chain is preferable.

Checking the blade and guide bar if need sharpen or replace after cutting 300times.

## **STORAGE**

1. Clean the product as described above.
2. Store the product and its accessories in a dry, frost-free, well-ventilated place.
3. Always store the product in a place that is inaccessible to children. The ideal storage temperature is between 10 and 30°C.
4. We recommend using the original package for storage or covering the product with a proper cloth or enclosure to protect it against dust.

## **TRANSPORTATION**

1. Switch the product off and disconnect the spark plug connector before transporting it anywhere.
2. Attach transportation guards for cutting means of hedge trimmer, brush cutter and pruner.
3. Always carry the product by its handles.
4. Protect the product from any heavy impact or strong vibrations which may occur during transportation in vehicles.
5. Secure the product to prevent it from slipping or falling over.

## **ENVIRONMENTAL PROTECTION**

1. Waste products should not be disposed of with household waste. Please recycle where facilities exist. Check with your Local Authority or local store for recycling advice.
2. Petrol, oil, old oil, a mixture of oil and petrol and objects soiled with oil e.g. cleaning cloths do not belong in the household rubbish. Dispose of oily items in accordance with local guidelines and hand them in at recycling centers.
3. The product comes in a package that protects it against damages during shipping. Keep the package until you are sure that all parts have been delivered and the product is function properly. Recycle the package afterwards.

# TROUBLESHOOTING

If you experience problems, check the following:

Symptom	Cause	Solution
Engine will not start	Start/Stop switch "O"	Move to position "I".
	Choke not OFF (cold engine)	Move choke to the OFF position.
	Out of Fuel	Add fuel and press priming bulb to fill carburetor.
	Bad fuel, trimmer stored without draining fuel, refueled with bad fuel.	Drain fuel tank and carburetor, refuel with fresh fuel mix.
	Spark plug faulty, fouled, or has incorrect gap, fuel filter clogged, carburetor malfunction, valves stuck, etc.	Clean or replace the spark plug. Check the spark plug gap. Replace or repair faulty components as needed.
	Incorrect fuel	Check fuel for water or sub standard mix. If the fuel is not correct replace with new fuel.
Low Power or engine speed won't increase	Air filter dirty or clogged.	Check, clean or replace air filter.
	Fuel filter dirty or clogged throttle cable & spark plug.	Replace fuel filter, adjust cable, or replace if necessary.
	Grass, twigs etc wrapped around output shaft or cutting attachment.	Move Start/Stop switch to the "O" position and disconnect the spark plug cap from the spark plug. Remove grass from output shaft and cutting attachment area.
	Idle speed too low.	Adjust idle screw.
Cutting-line head	Worn or broken clutch, broken cable, worn or broken gear case parts.	Replace or repair faulty components as needed.
	Cutting-line head loose.	Tighten cutting-line head.
Engine will not idle properly	Carburetor requires adjustment.	This is not user serviceable, contact the Helpline.
Excessive exhaust smoke	May be too much oil mixed with the petrol.	Replace with proper fuel.
Excessive vibration	Engine and silencer is not secured.	Check the engine and silencer after complete cooling.
	Blade or shield may be damaged, or the blade could have collided with the shield.	Replace any damaged parts.

**NOTE:** If vibration persists, or other problems remain please contact the Helpline for advice.

## MAINTENANCE

Remove the plug from the socket before carrying out any adjustment, servicing or maintenance.

Your power tool requires no additional lubrication or maintenance.

There are no user serviceable parts in your power tool. Never use water or chemical cleaners to clean your power tool. Wipe clean with a dry cloth. Always store your power tool in a dry place. Keep the motor ventilation slots clean. Keep all working controls free of dust. Occasionally you may see sparks through the ventilation slots. This is normal and will not damage your power tool.

If the supply cord is damaged, it must be replaced by the manufacturer, its service agent or similarly qualified persons in order to avoid a hazard.

## ENVIRONMENTAL PROTECTION



Waste electrical products should not be disposed of with household waste. Please recycle where facilities exist. Check with your Local Authority or retailer for recycling advice.

## GUARANTEE

This product is selected for DOMESTIC USE ONLY and not for business use.

This product is guaranteed against manufacturing defects for a period of 24 months. This does not cover the product where the fault is due to misuse, abuse, use in contravention of the instructions, or where the product has been the subject of unauthorised modifications or alterations, or has been the subject of commercial use. In the event of a problem with the product within the guarantee period please return it to your nearest store. If the item is shown to have an inherent defect present at the time of sale, the store will provide you with a replacement. Your statutory rights remain unaffected.

Issue1 08/2015

# DECLARATION OF CONFORMITY

We,  
Positec Power Tools (Europe) Ltd, PO Box 6242, Newbury, RG14 9LT, UK

Declare that the product

Description **Petrol Brush Cutter With Multi Tools**  
Type **SBC30 (SBC-designation of machinery, representative of Petrol Brush Cutter with Multi Tools)**  
Function **cutting brush, trimming grass, trimming hedges and bushes, forest work**

Complies the following directive:

**2006/42/EC, 2011/65/EU, 2014/30/EU**

The notified body involved

Name: **Intertek Deutschland GmbH (Notified body 0905)**

Address: **Stangenstraße 1, 70771 LEINFELDEN-ECHTERDINGEN**

Certification No.: **WWRZ EN-ISO-11806-1**

**2000/14/EC amended by 2005/88/EC:**

- Conformity Assessment Procedure as per
- Measured Sound Power Level
- Declared Guaranteed Sound Power Level

**Annex V&VI**

**115 dB (A)**

**115 dB (A)**

Standards conform to

**EN ISO 11806-1, EN ISO 3744, EN ISO 14982, EN ISO 10517, EN ISO 11680-1**

The person authorized to compile the technical file:

Name **Jim Kirkwood**

Address **Positec Power Tools (Europe) Ltd, PO Box 6242, Newbury, RG14 9LT, UK**



2017/11/24

Allen Ding

Deputy Chief Engineer, Testing & Certification

Positec Technology (China) Co., Ltd

18, Dongwang Road, Suzhou Industrial

Park, Jiangsu 215123, P. R. China



