

Joining

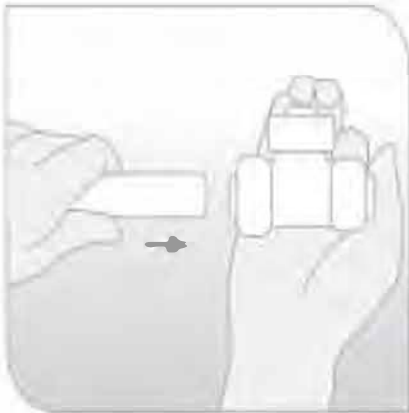


Use only purpose designed pipe cutters and cut the pipe squarely. Ensure the pipe is free from burrs and scratches.

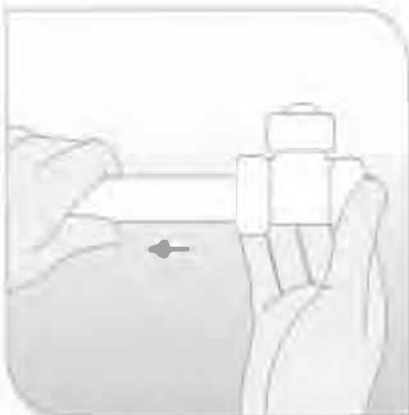
Do not use a hacksaw.



Always use the correct pipe insert.



Ensure all cap nuts are hand tightened. Visually check the internal components. Make the correct insertion depth by observing the chevron markings on the pipe. Push the pipe firmly and horizontally into the fitting. A secure joint has been made when the correct insertion marking is reached.



After checking the correct insertion depth has been achieved, pull back on the pipe firmly to ensure the grab ring engages correctly.