

尺寸: 130x190mm



USER OPERATING MANUAL

PRODUCT CODE: **HPGS2BKSM**

READ INSTRUCTIONS CAREFULLY: Read and follow all instructions. Place instructions in a safe place for future reference. Do not allow anyone who has not read these instructions to assemble, light, adjust or operate the heater. This product is only suitable for well insulated spaces or occasional use.



UK: M-18 Freshwater Road, Dagenham, Essex RM8 1PX
EU: CED 18 Rosemount Business Park Dublin, D11 K2BW
www.cedelectrical.co.uk | info@cedelectrical.co.uk



Introduction

To get the most out of your new heater, please read through these instructions and the attached safety regulations before use. Please also save the instruction manual in case you need to remind yourself of the heater's functions at a later date.

Technical Specification

Details	PN2000G
Voltage	220-240V
Frequency	50/60Hz
Power	1000/2000W
IP Waterproof	IP24



Important

Before plugging the unit into the mains, ensure by visual inspection that the unit is intact and has not suffered any damage during transit.



Caution

The appliance must be always placed on a flat and stable surface. In order to avoid a hazard due to inadvertent resetting of the thermal cutout, this appliance must not be supplied through an external switching device, such as a timer, or connected to a circuit that is regularly switched on and off by the utility.

For your own safety

1. Read all instruction before using the heater.
2. Only connect the heater to a single-phase socket with a mains voltage as specified on the rating plate.
3. Do not leave your home long time while the appliance is in function: ensure that the switch is in OFF (0) position and the thermostat is in minimum position. Always unplug the appliance.
4. Keep combustible material such as furniture, cushions, bedding, paper, clothes, curtains etc. at least 100cm away from the heater.
5. Do not hand anything on or in front of the heater.
6. Always use the heater in an upright position.
7. Do not use the appliance in rooms less than 4m² area.
8. Always unplug the heater when not in use long time. Do not pull the cord to unplug the heater.
9. Keep the air inlet and outlet free from objects at least 1m in front and 50cm behind the heater.

1

heater.

10. Do not install the heater immediately below a socket-outlet.
11. Do not let animals or children touch or play with the heater. Pay attention the air outlet gets hot during operation.
12. Do not cover. If covered, there is the risk of overheating.
13. Do not use this heater in the vicinity of showers, bath tubs, wash basins or a swimming pool etc.
14. Do not use the heater in the rooms containing explosive gas inflammable solvents, varnish or glue.
15. Keep the heater clean. Do not allow any objects to enter any ventilation or exhaust opening as this may cause electric shock, or fire or damage to the heater.
16. If the heater has been dropped or damaged it should not be used until it has been inspected by a qualified service center.
17. Close supervision is necessary when the heater is being used by or near children, persons suffering from any physical impairment or pets.
18. Do not use to dry clothes or any fabric.
19. Do not use the heater to dry your laundry. Never obstruct the intake and outlet grilles (danger of overheating).
20. Do not move the appliance while it is functioning in order to avoid overheating with the additional risk of fire.
21. If any part of the heater or supply cord becomes damaged, it must be replaced by a qualified electrician. In order to avoid a hazard.
22. The heater must not be located immediately below a socket-outlet.
23. Do not use this heater with a programmer, timer or any other device that switches the heater on automatically, since a fire risk exists if the heater is covered or positioned incorrectly.
24. Children should be supervised to ensure that they do not play with the appliance.
25. This appliance can be used by children aged from 8 years and above and persons with reduced physical, sensory or mental capabilities or lack of experience or knowledge if they have been given supervision or instruction concerning use of the appliance in a safe way and understand the hazards involved.
26. Children shall not play with the appliance. Cleaning and user maintenance shall not be made by children without supervision.
27. Children of less than 3 years should be kept away unless continuously supervised.
28. Children aged from 3 years and less than 8 years shall only switch on/off the appliance provided that it has been placed or installed in its intended normal operating position and they have been given supervision or instruction concerning use of the appliance in a safe way and understand the hazards involved.
29. Children aged from 3 years and less than 8 years shall not plug in, regulate and clean the appliance or perform user maintenance.
30. Do not leave unattended when plug in to the mains supply.



Caution

Some parts of the heater can become very hot and cause burns. Do not touch hot surfaces. Particular attention has to be given where children and vulnerable people are present.

2



Note

These heaters are intended for domestic use only. They can be used as both portable appliance and wall mounting appliance.

Product features

1. Elegant black glass panel.
2. High quality aluminum heating element: quick heating with higher energy savings.
3. Touch screen control and remote control.
4. Timer from 1 to 24 hours to turn the convector heater on or off at the desired time.
5. Digital display with automatic room temperature display.
6. For wall mounting or free standing with tripod.

Installation (While use on the floor as portable appliance)

Please attach the feet on the heater's housing, and fixing them with supplied ST4x12mm(8pcs) screws.



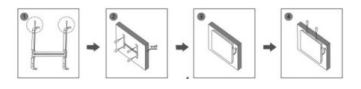
Wall mounting (While use the heater as fixed appliance)



Please note that the product must be installed at least 15 cm from the floor and 50 cm from the ceiling.

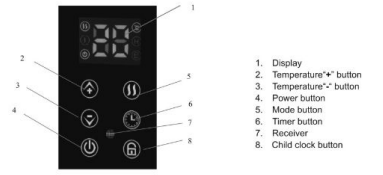
1. For wall mounting study scheme
2. Drill the holes at each sides on the wall, then insert the plastic expanded plugs within.
3. Fix the bracket in the wall with screw, see the image 2.
4. Tight the screw on the top of bracket to catch steady

3



Operation

Insert the plug into a suitable socket outlet on an A.C. power supply having the same voltage as that shown on its rating label. The touch screen buttons located on the product correspond to the remote control functions:



1. Display
2. Temperature++ button
3. Temperature-- button
4. Power button
5. Mode button
6. Timer button
7. Receiver
8. Child lock button

Power function

Before you working the heater, you should turn on the switch in side. Press to set functions. The upper part of the display shows the room temperature. The heater is working at low power heating conditions.

Mode

Press to regulate low or high temperature power

Temperature selection

4

Press "*" or "-" button to select the desired temperature from a range of 5°-40°C. The temperature indicator will remain lit for a long time.

Timer

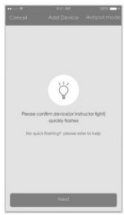
Press the timer button , to select the desired range between 1 hour to 24 hours. The remaining time will appear.

Child lock

Press the child lock button 3 seconds , will be display on the screen, so you can not make any operate beside , and same ways to touch to delete the child lock function.

WiFi Function

1. Use your phone to scan the QR code below or search "Tuya Smart" in Application on market to download and install the App.
2. Select your country code, enter the cellphone number and tap "Get" to get a message containing verification on code.
3. Enter the verification on code in the message and tap "Login" to login the App.
4. Go to the App, tap "add device" at the bottom, as shown in the picture 1



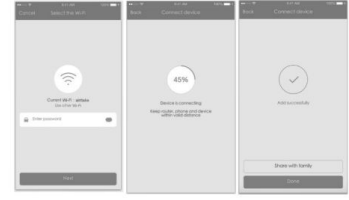
Pic 1

5. please make sure the device's instructor light quickly flashes.

5

c. If the light is not flashing as the status as above described, please long press the device's reset button for 5 seconds or longer until it flashes correctly as shown in the picture below.

6. Select the Wi-Fi, enter password and tap "Next" as shown in the picture 2 below. For quick connect mode, the App interface will go through the changes during the network configuration on process shown in the picture 3, Picture 4 shows the interface when the device is connected successfully.



Pic 2

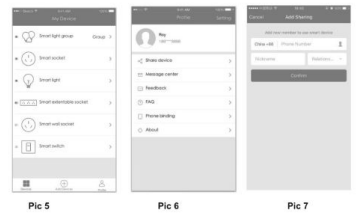
Pic 3

Pic 4

7. After the device is connected successfully, tap "Devices" at the bottom. The device name shows in the list in the picture 5. Tap it to enter the control panel of the smart socket.

Remarks:
When device is online, there will be a green dot at the front of the device icon;
When the device is offline, the dot will be grey;
If is the device shared by others, there will be double loop.

6



Pic 5

Pic 6

Pic 7

8. "My profile" is where users could manage personal information. The key information is as follows see picture 6:

- a. Personal information: including account name and cellphone number
- b. Information of shared devices
- c. Message center
- d. Entry to submit feedback
- e. F.A.Q
- f. Phone binding: if you sign in with social network account, you could bind your phone number with your account
- g. About
9. Add sharing: As shown in the picture, users could type in a new member's cellphone number and share the device with him. The new member could control the device with his own account, see picture 7

Operating sound

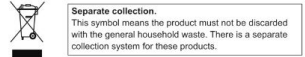
The appliance emits a beep upon each operation setting.

Cleaning and maintenance

Before cleaning always remove the plug from the electrical socket outlet. Clean the air inlet and outlet grilles frequently. Never use abrasive powders or solvents.

7

Disposal Information



Separate collection.
This symbol means the product must not be discarded with the general household waste. There is a separate collection system for these products.

Should you want to dispose of this item please do not put it with the household waste. Used electrical and electronic equipment and batteries must be made available for separate collection.

Private households may return their used electrical and electronic equipment to designated collection facilities free of charge. Identify where your local collection points are and return the product there. (Facilities are usually available at the municipal waste site, your electrical retailer, or your local authority may provide separate collection from the household.)

By disposing of this product correctly you will be providing positive help to the environment.

8