



2KW Plinth Heater BSMPLINHEATREMSS

Safety

This equipment has been designed and manufactured to the highest international standards, but like all electrical appliances which are operated by mains voltage, care must be taken if you are to obtain the best results and safety is to be assured

- Do NOT use this appliance in bathrooms or where similar conditions of excessive moisture are present.

- Do NOT handle the appliance with wet hands.

- Do NOT use the appliance in an enclosed room so small that the heater will generate ambient temperatures in excess of 30 C.

- Do NOT use the appliance with young children unattended.

- Do NOT use the appliance in workshops or rooms where excessive dust is generated or present.

- Do NOT touch the outlet grille when the appliance is in use.

- Do NOT use the appliance if damaged. In order to avoid overheating, DO NOT cover the heater

If the appliance has been kept in freezing conditions, run at cold/fan setting for 5 minutes before using heat settings.

This appliance meets the requirements of EU Directives (EMC) 2014/30/EU, (LVD) 2014/35/EU and meets UKCA.

The appliance is intended to give short term heat boosts at kitchen floor level. It is not designed for use as a permanent source of heat for comfort

The appliance is not to be used by children or persons with reduced physical, sensory or mental capabilities, or lack of experience and knowledge, unless they have been given supervision or instruction concerning the use of the appliance by a person responsible for their safety.

Children should be supervised to ensure that they do not play with the appliance.

- Do NOT touch the heater with wet hands or in any way bring water into contact with it. It might be necessary from time to time to remove the heater from its location and clean any dust and fluff on the top with a soft brush vacuum cleaner attachment, taking care not to damage the fan wheel.

To remove the heater, unscrew the fixing screws and pull the unit from the plinth. Re-fit once you finished with the cleanin

If Your Heater Does Not Work

- Check that the unit is wired correctly.

- Check that the fuse has not blown in the connection unit.

- Check re-set of ES Control as described under Controls.

Should none of the above remedies work, then disconnect heater from mains and consult an accredited Service Agent. If the appliance is still under guarantee, return it for an exchange. Do NOT attempt to repair the heater yourself

Guarantee

This guarantee is offered to you as an extra benefit and does not affect your legal rights.

This appliance is guaranteed for one year, from the date of purchase against faulty material or workmanship. This applies only if the appliance has been used for purposes in accordance with the instructions provided and has not been connected to an unsuitable electricity supply or is subject to misuse, neglect, damage nor modified or repaired by any person not authorised to do so.

The correct electricity supply voltage is shown on the rating label attached to the appliance.

Installation Recommendation

It is recommended that careful thought be given to the positioning of the appliance within the room. Try to avoid being directly in front of the heater for long periods. Consider where you may stand, at a work surface or the like.

Try to position the heater where you would not be in it's direct path for periods of time long enough that it would cause you discomfort.

The heater must not be located immediately below a fixed electrical outlet.

Installation Requirements

The appliance is designed to fit behind the plinth board and below the base shelf of a kitchen-type cupboard i.e. within the free plinth space. **Figure 1**, across, shows the MINIMUM size cupboard unit into which the appliance may be fitted.

When installed and operating, the air blown by the appliance must enter the plinth space through the fascia panel inlet grille.

This is best Achieved when the back of the plinth space is close to a wall or closed off by the board.

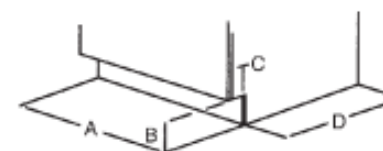
Cleaning

- Always disconnect the heater from the mains before cleaning.

- An occasional wipe of the front grill cover with a damp cloth is recommended. To help prevent the build up of dust and fluff we also advise to occasionally apply a soft brush attachment of a vacuum cleaner to the front grill

- Do NOT use metal or furniture polish on any part of the heater.

Figure 1. (Min. Cupboard Size)



Min. Cupboard Size-- Fig. 1	
A-Width	500mm
B-Plinth Height	120mm
C- Base Shelf Overhang	750mm(MAX)
D-Depth	500mm

Installation Instructions

1. Cut a hole in the plinth board, to the dimensions given in **Figure 2** overleaf.
2. The power supply cable must be routed from the connecting unit into the plinth space. The cable should be long enough to pass through the plinth space and plinth board. This enables the appliance to be subsequently withdrawn from the plinth if maintenance is required. Ensure no sharp edges are present along the power cable route.
3. The appliance can now be slid through the plinth board, until the fascia panel abutts the outside of the plinth board. Screw the fascia panel to the plinth board with the screws provided.
4. Connect the unit to the mains power supply in accordance with the appropriate section of these instructions.

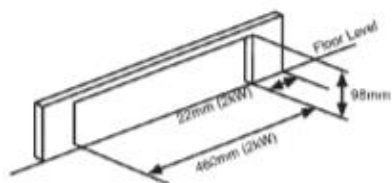
To remove the appliance from the plinth space, should maintenance be required, disconnect mains power supply, unscrew the fascia panel and slide out the appliance.

The dimensions are 500mm wide by 100mm (min.) high plinth.

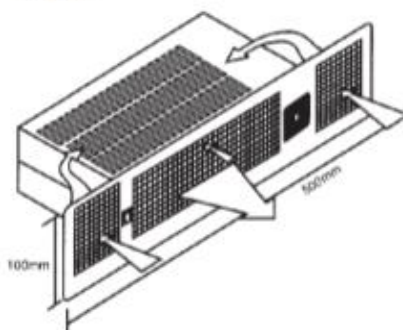
If the appliance is to be fitted into a plinth greater in length than specified then the hole shown in **Figure 2** must be cut at least 22mm from one end.

If the supply cord is damaged, it must be replaced by the manufacturer or its service agent or a similarly qualified person to avoid a hazard. If replacement of the supply cord is found to be necessary, the following should be noted.

Figure 2. (Mounting Hole)



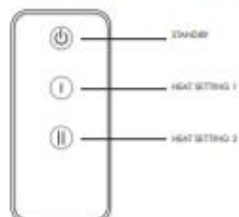
Airflow



Controls and Operation

1. Firstly, switch on the main switch on the plinth heater
2. To operate the plinth heater by remote control.

Illustration of remote control



-Press the Standby button once and the fan will start working and will blow cold air

-Press the '1' button and the plinth heater will work at heat setting 1 to generate warm air.

-Press the '2' button and the plinth heater will work at heat setting 2 to generate hot air.

-Press the Standby button again and the appliance will be in standby mode.

NOTE: Please note the fan will run on for 30 seconds after turning off to cool the appliance and prevent overheating.

If you cannot locate your Remote Control Device, you can operate the plinth heater via the control panel on the appliance.

Illustration of control panel



- Press the button once and the fan will start working and blow cold air.

- Press the button a second time and it will work at heat setting 1 for warm air.

- Press the button a third time and it will work at heat setting 2 for hot air.

- Press the button a fourth time and the plinth heater will go into standby mode.

The plinth heater can be fully turned off via the main on/off switch on the appliance.

The appliance is fitted with an electronic Safety Control (ES). This is a safety device which switches off the heater if, for any reason the appliance overheats. The ESControls can only be reset after the appliance has cooled down. In order to reset the ES Control proceed as follows:

1. Switch off appliance and leave for approximately 5 minutes,
2. Switch on appliance and ES Control will reset.
3. Ensure that the appliance is functioning correctly. If the ES Control operates again, the appliance should be checked by a competent electrician,


Connection to the Mains Supply

Electrical installation should be carried out by a competent installer, preferably registered with NICEIC (National Inspection Council for Electrical Installation Confræmng) in accordance with the 16 edition of the IEE Wiring Regulations, (BS.7671), and any relevant Local Authority by-laws.

This heater is fitted with a 3-core mains supply cable and should be permanently connected to the electricity supply via a double pole switch having 3mm gap on each pole. A switched Fused Connection unit to BS.1363 Part 4 is a recommended mains supply connection accessory to ensure compliance with safety requirements applicable to fixed wiring installation.

WARNING !

Do NOT install the appliance in the floor, window-sill or similar locations.

 Waste electrical products should not be disposed of with household waste. Please recycle where facilities exist, check with your local authority or retailer for recycling advice.

Made in China for

Technical Consumer Products Ltd

1 Exchange Court, Cottingham Road, Corby, Northamptonshire, NN17 1TY

May 2022