

# FITTING INSTRUCTIONS FOR FLEXIGLAS 50

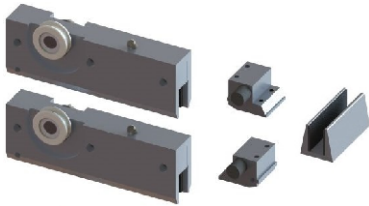
## COMPONENTS



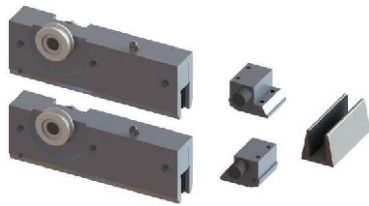
51120/30/40/60 - Anodized Aluminium



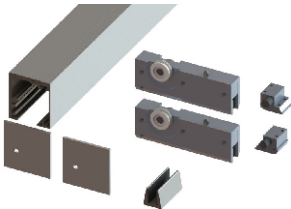
51230/40/60 - Satin Stainless Steel



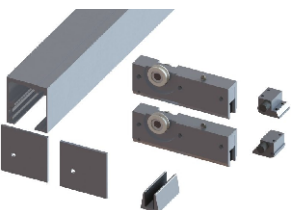
51172 - Flexiglas fitting set, anodized aluminium, 50kg



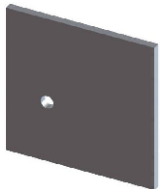
51272 - Flexiglas fitting set, satin stainless steel, 50kg



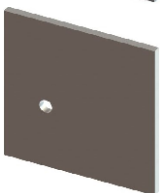
51181 - Flexiglas 50 standard kit, anodized aluminium



51281 - Flexiglas 50 standard kit, satin stainless steel



51171 - End caps (set of 2), anodized aluminium



51271 - End caps (set of 2), satin stainless steel



51191 - Flexiglas 50, double soft closing kit, 50kg

## Required tools

Allen Key



Spanner



Power screw driver



Posi drive screw bit



Drill bit



# Technical Specifications

## FLEXIGLAS 50

Maximum door weight 50kg

DH - Door height, maximum 2400mm

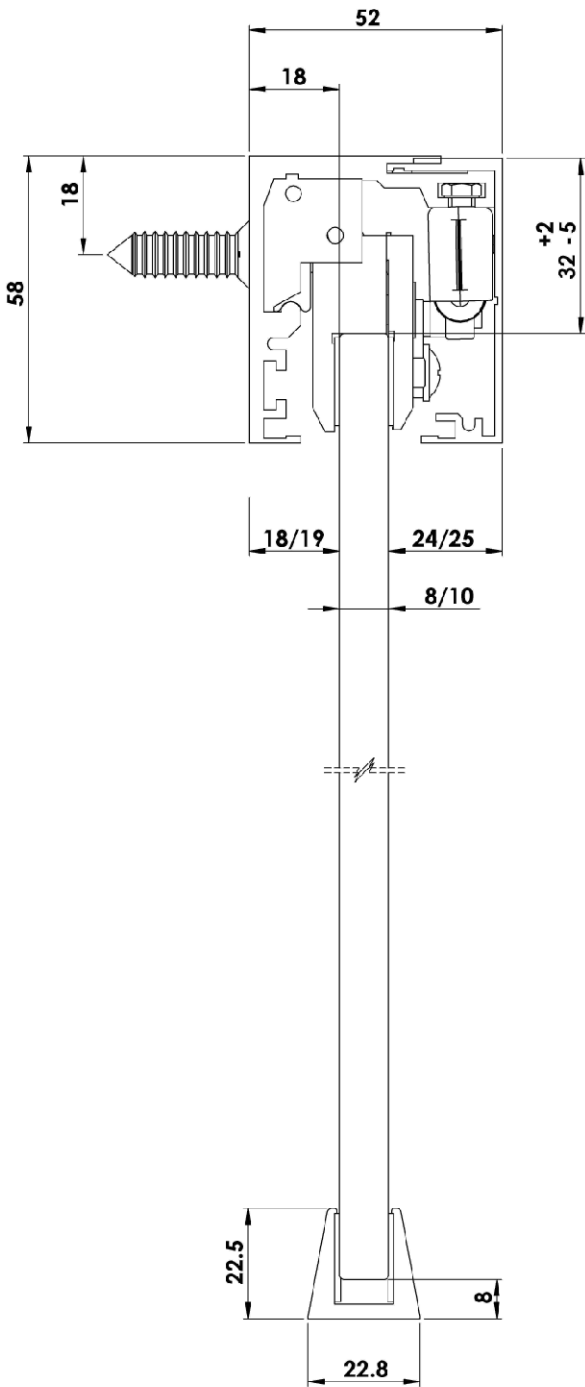
DWi - Door width

DT - Door thickness, 8mm or 10mm

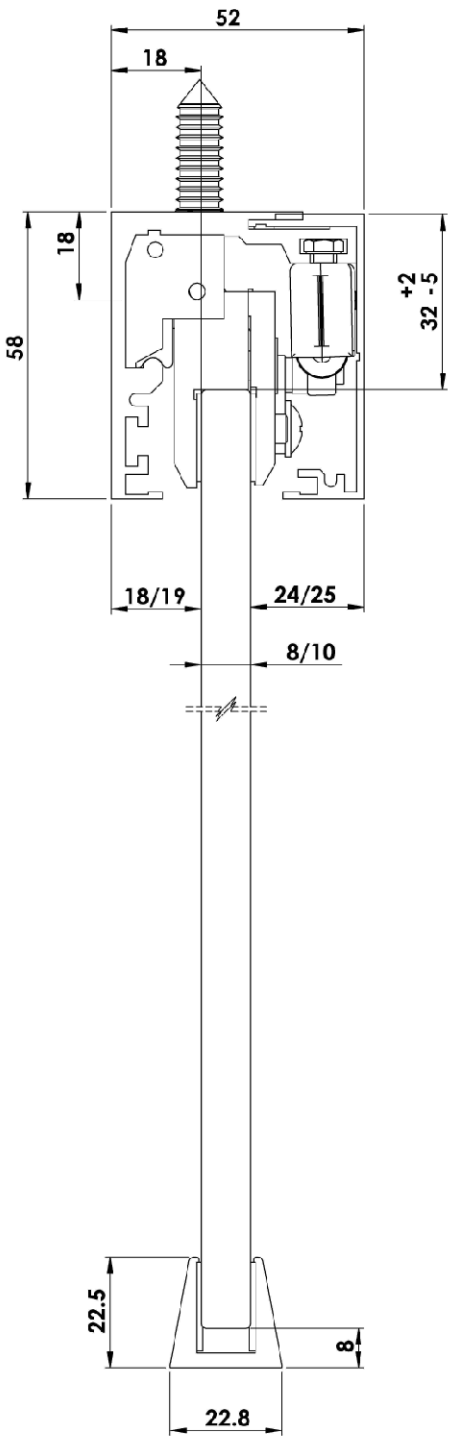
OW - Opening width

OH - Opening height

Side View  
Side Fixing



Side View  
Soffit Fixing

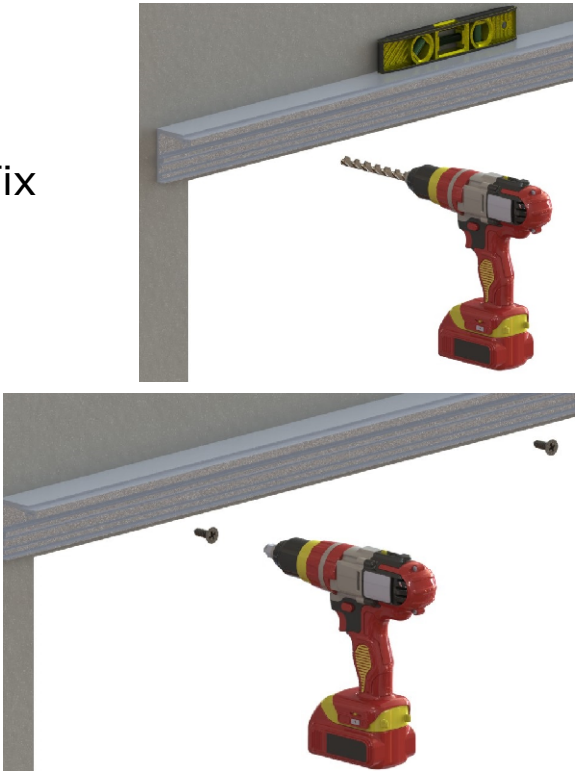


**Step 1** Fixing track

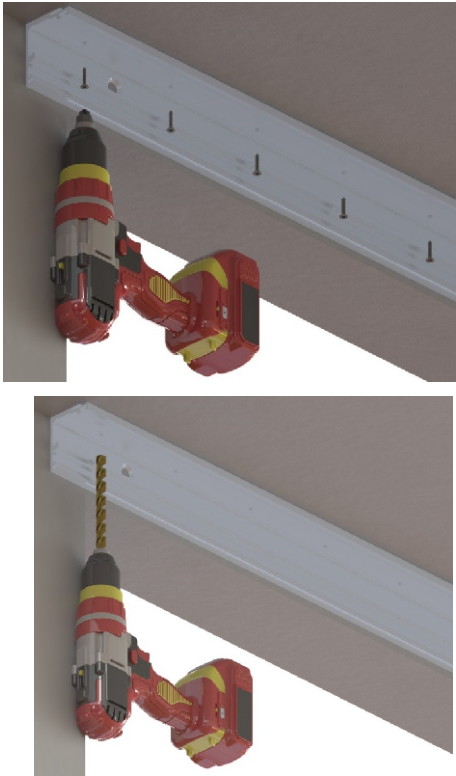
Face Fixed: track comes pre-drilled, mark the position of the levelled track on the wall and fix it with screws

Soffit Fixed: track needs to be pre-drilled, mark the ceiling and fix the track with screws

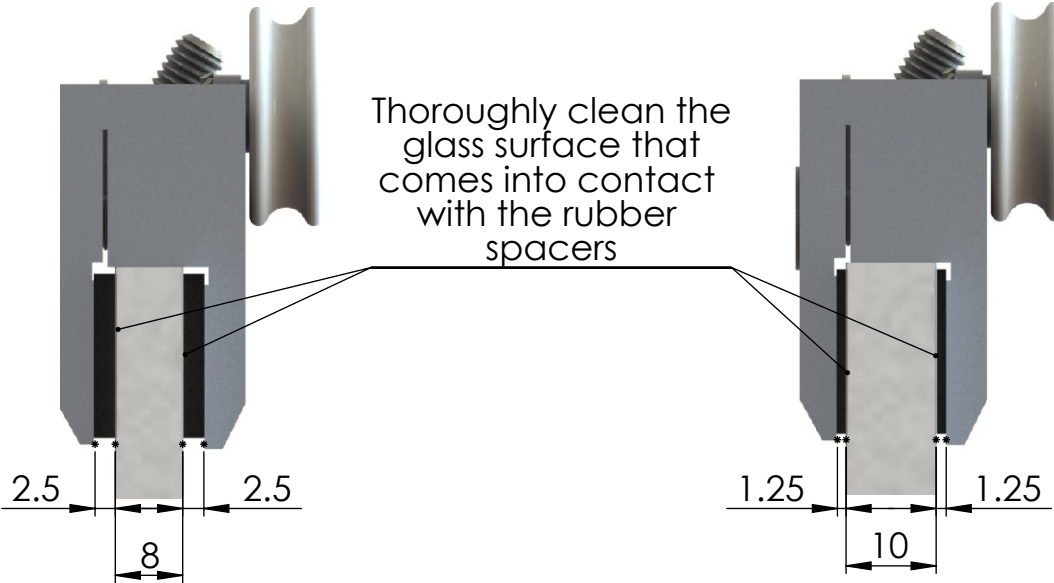
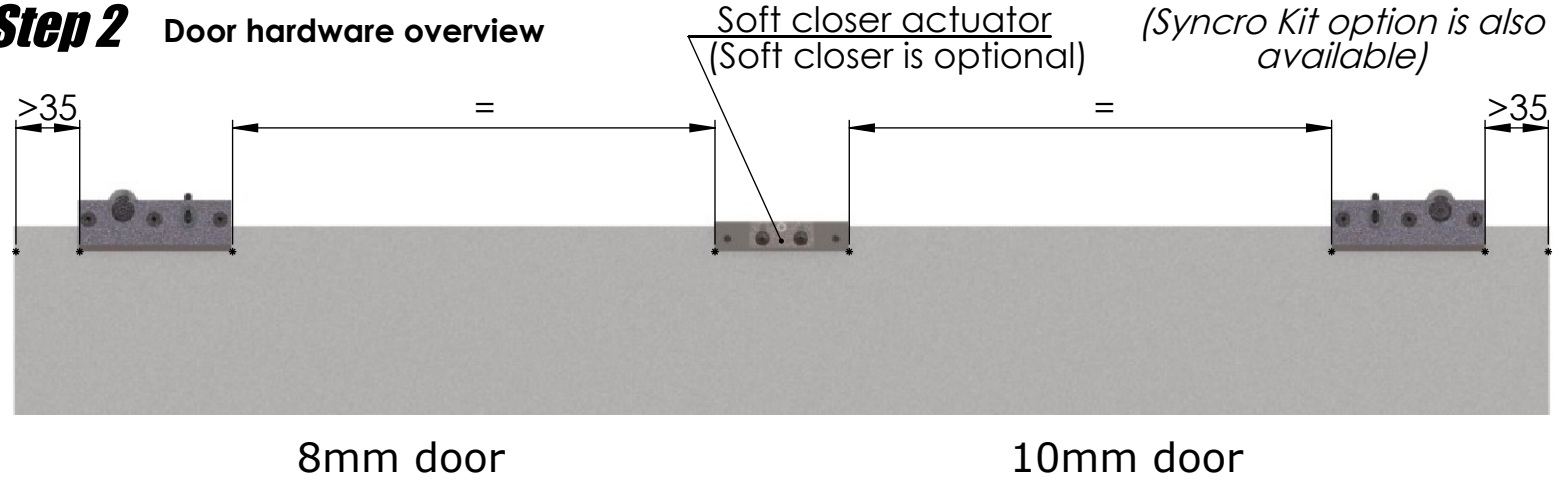
Face Fix



Soffit Fix



**Step 2** Door hardware overview





### Step 3 Prepare hangers and fix with 10mm door

a. Prepare all required components

b. Insert the rubber spacers on each side between the door and the hanger

**DO NOT USE GLUE**

c. Tighten the screws with 12Nm force

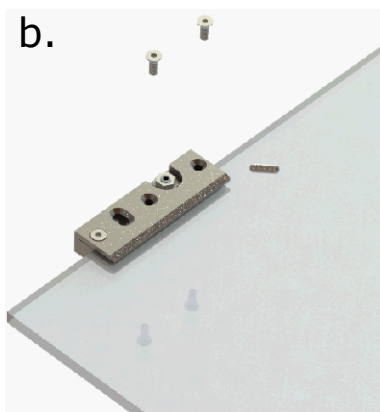
d. Insert the grub screw

**NOTE: If you opted for a soft closer or syncro kit also refer to the appropriate instructions**

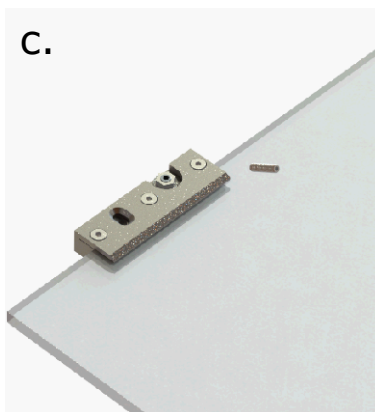
a.



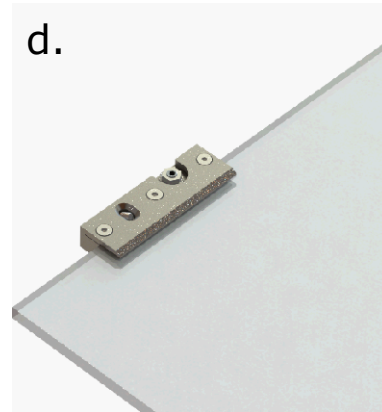
b.



c.



d.



### Step 4 Prepare hangers and fix with 8mm door

a. Prepare all required components

b. Insert the rubber spacers on each side between the door and the hanger

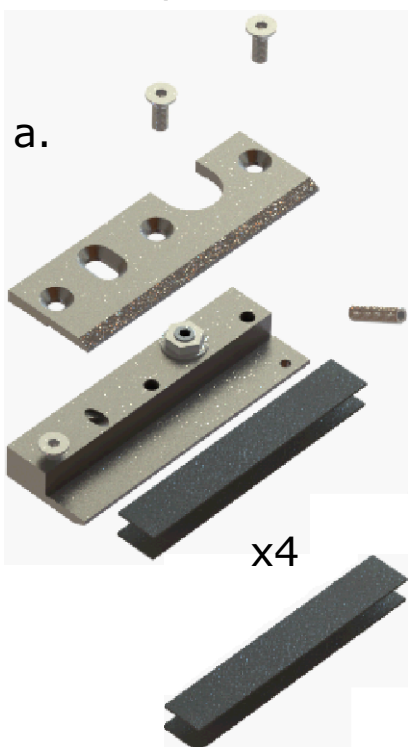
**DO NOT USE GLUE**

c. Tighten the screws with 12Nm force

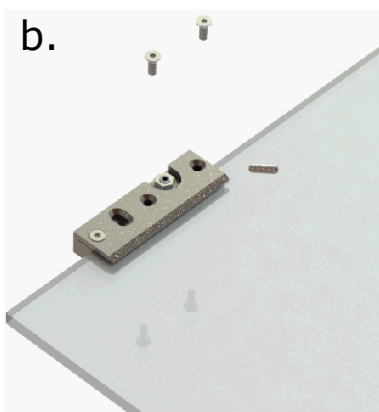
d. Insert the grub screw

**NOTE: If you opted for a soft closer or syncro kit also refer to the appropriate instructions**

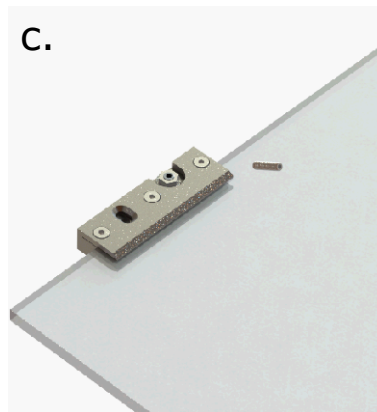
a.



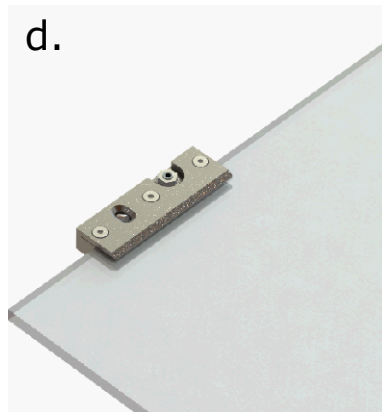
b.



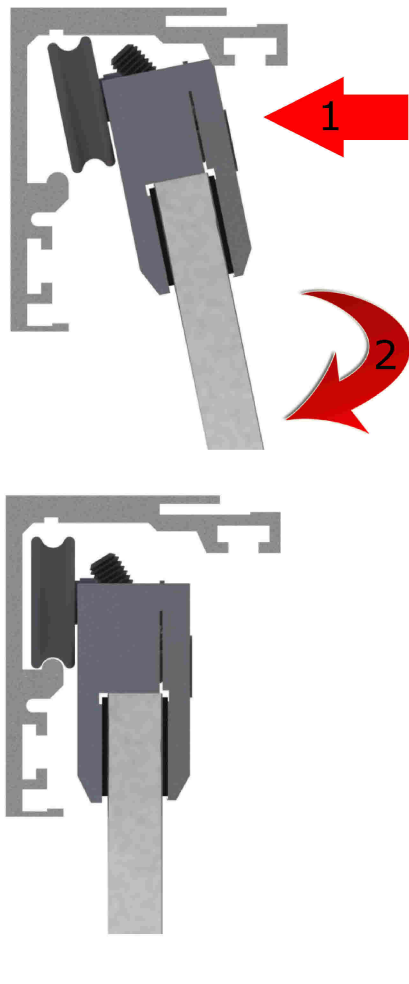
c.



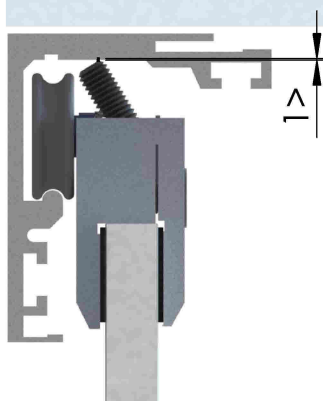
d.



## Step 5 Insert door and hangers into track



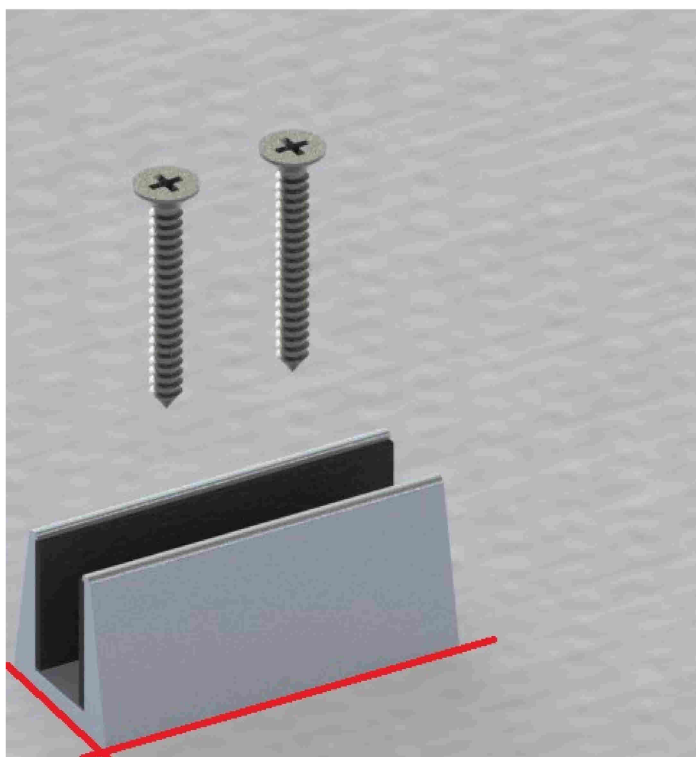
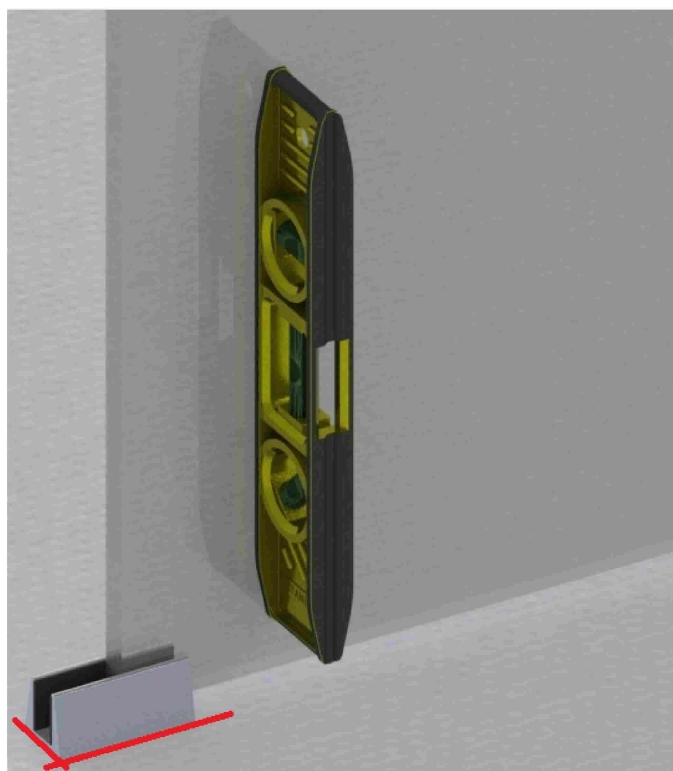
Adjust the height of the door by holding the **RED** nut with a spanner and rotate the **BLUE** grub screw with an allen key



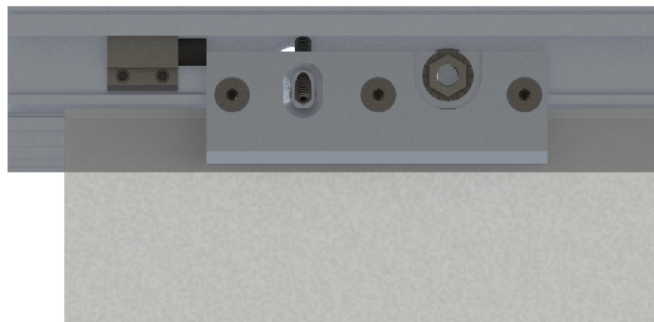
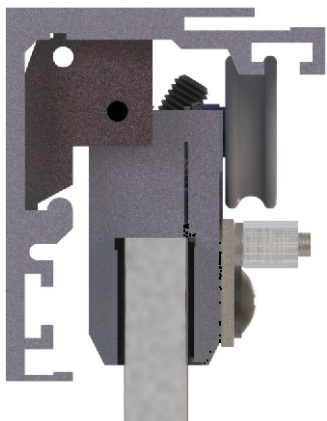
To prevent the hanger from rattling in the track tighten the grub screw and leave a 1mm gap or smaller. Try not to obstruct the movement of the hangers.

## Step 6 Install the bottom guide

Ensure the door is level, mark the position of the guide and secure it with screws

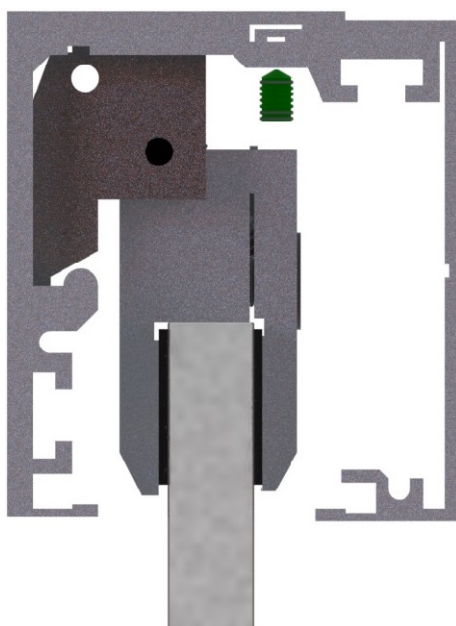


## **Step 7** Installing stopper and fitting end caps

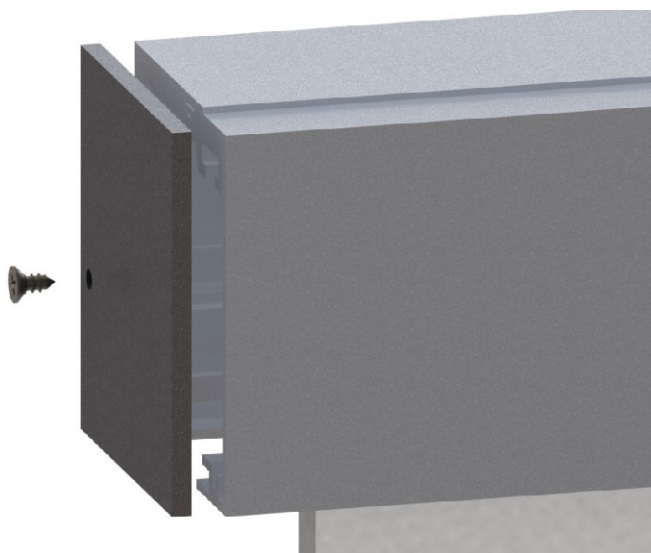


Insert stopper into track and secure it with screws

NOTE: If you opted for a soft closer or syncro kit also refer to the appropriate instructions



Put the track front cover and secure with **screws** supplied



Put end caps into position and secure with screws

# **FLEXIGLAS 50**



Coburn Sliding Systems Limited  
Unit 1, Cardinal West, Cardinal Way,  
Godmanchester, PE29 2XN, United Kingdom

Phone: +44 (0)20 8545 6680

Fax: +44 (0)20 8545 6720

E-mail: [sales@coburn.co.uk](mailto:sales@coburn.co.uk)

[www.coburn.co.uk](http://www.coburn.co.uk)