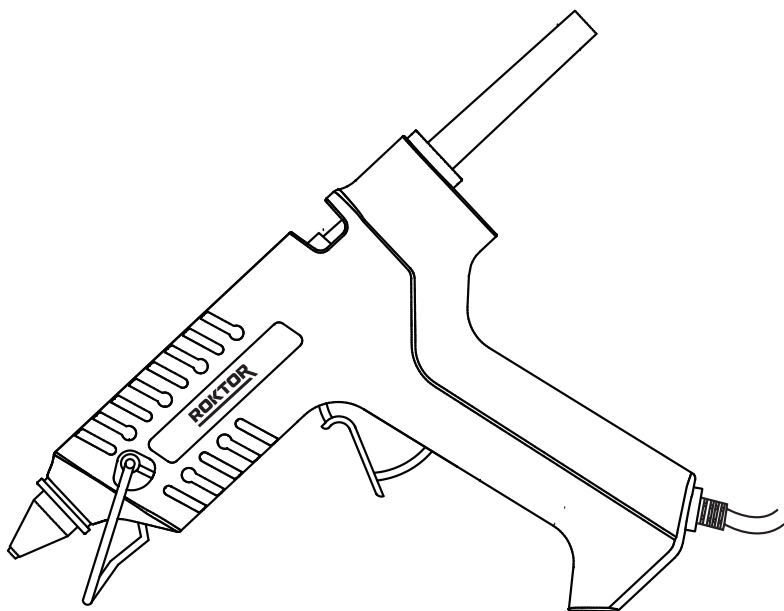




## ORIGINAL USER INSTRUCTIONS

# 15W GLUE GUN

SKU: AB762



**READ BEFORE USE**

**PLEASE KEEP THESE INSTRUCTIONS FOR FURTHER REFERENCE**

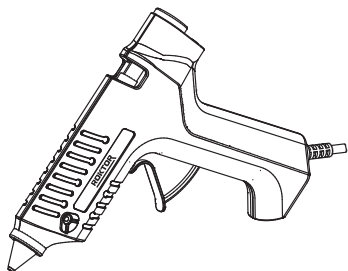
Helpline: +44 3331 880059

Email: [roktor.support@positecgroup.com](mailto:roktor.support@positecgroup.com)

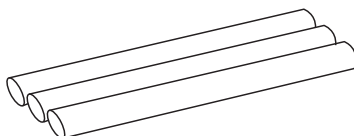
# CONTENTS

- WHAT'S IN THE BOX----- 3
- SPECIFICATIONS----- 4
- EXPLANATIONS AND SYMBOLS, CAUTIONS AND WARNINGS----- 4
- IMPORTANT SAFETY WARNINGS----- 5
- PRODUCT DESCRIPTION AND IDENTIFICATIONS----- 6
- ASSEMBLY AND OPERATING INSTRUCTIONS----- 7
- CARE AND CLEANING----- 9
- TROUBLESHOOTING----- 9
- DECLARATION OF CONFORMITY / PERFORMANCE----- 10
- ENVIRONMENTAL INFORMATION----- 11
- WARRANTY----- 11
- CUSTOMER SUPPORT----- 12

## WHAT'S IN THE BOX



Glue gun



Glue sticks (11\*200mm)



Metal stand



User instruction manual

## SPECIFICATIONS

- 230V~, 50 Hz
- Metal stand

### TECHNICAL DATA

SKU/Model	AB762 (PGG15F.1)
Rated Voltage	230V ~ 50 Hz
Rated Power Rate	15W
Plug	BS plug
Protection class	□ /II
Heating Time	3min
Gluing Capacity	12g/min
Net Weight approx.(kg)	0.2kg

## EXPLANATIONS AND SYMBOLS, CAUTIONS AND WARNINGS



To reduce the risk of injury, user must read instruction manual



Class II device - Double Insulation



Risk of damage or injury if the instructions in this manual are not followed



Immediately disconnect the plug from the power outlet if it is damaged, and for all maintenance operations.



Wear eye protection



The product complies with the applicable European Directives and an evaluation method of conformity for these Directives was carried out.



UK Conformity Assessed

## IMPORTANT SAFETY WARNINGS



**CAUTION – To reduce risk of injury, user must read instruction manual**

### GENERAL SAFETY WARNINGS



**WARNING: Read all safety warnings and all instructions.** *Failure to follow the warnings and instructions may result in electric shock, fire and/or serious injury.*

#### **Save all warnings and instructions for future reference.**

This appliance can be used by children aged from 8 years and above, and persons with reduced physical, sensory or mental capabilities or lack of experience and knowledge if they have been given supervision or instruction concerning use of the appliance in a safe way and understand the hazards involved. Children shall not play with the appliance. Cleaning and user maintenance shall not be made by children without supervision.

If the supply cord is damaged, it must be replaced by the manufacturer, its service agent or similarly qualified persons in order to avoid a hazard.

### ADDITIONAL SAFETY INSTRUCTIONS FOR YOUR GLUE GUN

1. A fire may result if the appliance is not used with care, therefore
  - be careful when using the appliance in places where there are combustible materials.
  - do not apply to the same place for a long time.
  - do not use in presence of an explosive atmosphere.
  - be aware that heat may be conducted to combustible materials that are out of sight.
  - place the appliance on its stand after use and allow it to cool down before storage.
  - do not leave the appliance unattended when it is switched on.
2. **WARNING:** This tool must be placed on its stand when not in use.

The adhesive can produce harmful fumes when the glue stick is heated.

- Do not inhale fumes generated during bonding. Ensure adequate ventilation during use. If adequate ventilation is not provided, respiratory protection should be worn.
- Thoroughly clean clothing that comes into contact with adhesive.

Keep fingers away from the nozzle as it becomes very hot during use. Wear gloves to protect hands.

Always keep nozzle away from the power cord.

Do not touch the nozzle to any surface while running or shortly after running.

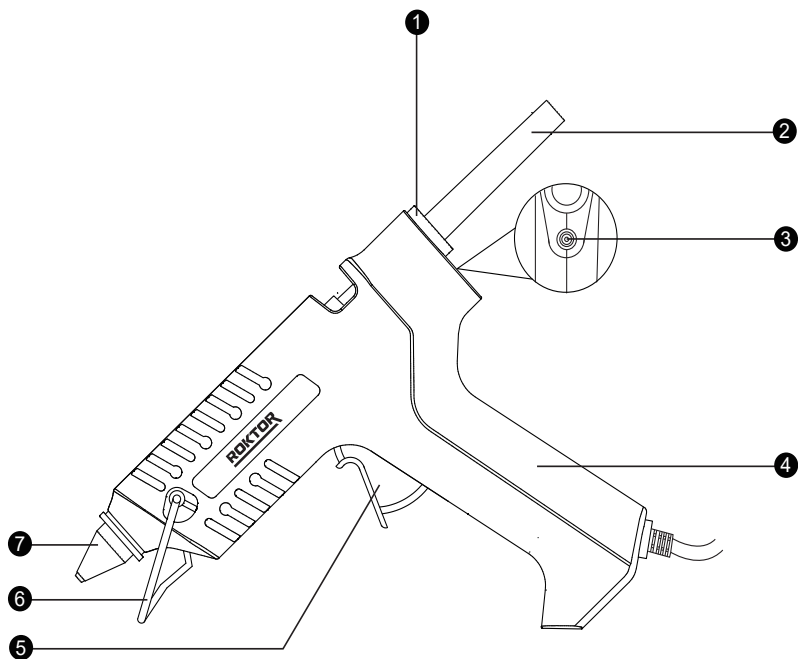
Place the power cord in a position that won't cause the glue gun to tip over.

Do not abuse the cord. Never use the cord for carrying, pulling or unplugging the tool. Keep cord away from heat. Damaged or entangled cords increase the risk of electric shock. Do not wrap the cord on the tool body.

Do not expose tools to rain or wet conditions. Water entering a tool will increase the risk of electric shock.

Remove the plug from the mains and allow the hot glue gun to cool down for at least 30 minutes before carrying out maintenance or cleaning work.

## PRODUCT DESCRIPTION AND IDENTIFICATIONS



1. Glue stick entry
2. Glue stick
3. Indicator light
4. Hand grip area
5. Flow control trigger
6. Metal stand
7. Nozzle with heat guard

# ASSEMBLY AND OPERATING INSTRUCTIONS



**NOTE:** Before using the tool, read the instruction book carefully.

The tool is packaged with some parts that are unattached and require a little, simple assembly.



**WARNING:** Do not operate until fully assembled and with all parts correctly attached.

## ASSEMBLY

### 1. INSERTING A GLUE STICK (SEE FIG. 1)

**NOTE:** Remove the plug from the socket before carrying out any adjustment, servicing or maintenance.

1. Insert the provided glue stick into the glue stick entry.
2. Squeeze the flow control trigger multiple times to allow the glue stick to be pushed down.

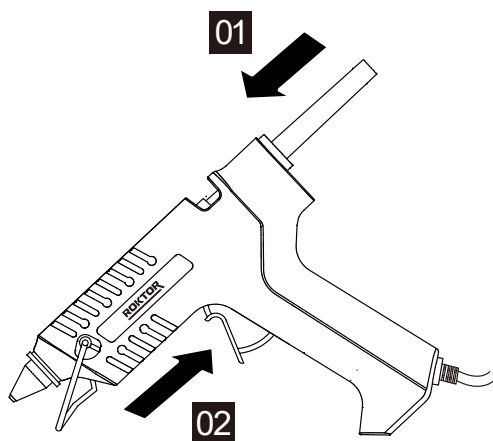


Figure 1

## OPERATION

### INTENDED USE

The tool is used for the quick gluing of clean, dry and grease-free materials with glue heated to its melting point.

### 1. PUTTING INTO OPERATION

- 1) Insert the power plug into the mains power supply. At this time, the indicator light will light up.
  - 2) Place the gun on the metal stand. Allow the gun to heat up for approximately 3 minutes before beginning work. Repeat the heating-up procedure if the flow control trigger becomes stiff or the outcoming glue becomes viscous.
- To switch off, just pull out the mains plug from the mains socket.



**WARNING:** Disconnect the glue gun from the mains power supply when not in use. Allow the unit to cool completely before storing. The hot nozzle can cause damage.

## 2. GLUING

### Preparations for gluing

The surfaces to be glued must be clean, dry and free of grease. A smoother surface is also more ideal for gluing.



#### **WARNING:**

Do not use inflammable solvents for cleaning!

The ambient temperature and the work piece to be glued must not be cooler than +5°C or warmer than +50°C.

Warm rapidly cooling materials (e.g. steel) for better adhesion.

### Gluing

1) Insert the glue stick into the glue gun, then press the flow control trigger.

2) Apply the glue in dots around the edges of the workpiece surface. For gluing flexible materials (e.g. textiles), apply the glue in a zig-zag line.



**WARNING:** Danger of burning! The glue and the nozzle tip are heated to 200°C. Do not allow the hot glue to come into contact with persons or animals. If hot glue touches the skin, immediately hold the spot for several minutes under a stream of cold water. Do not try to remove the glue from the skin.

3) After applying the glue, press the surfaces to be glued together immediately for a stronger bond.

4) Press the glued surfaces together for approximately 30 seconds. To assist with adhesion, apply a weighted load or clamp to the glued junction for approximately 5 minutes.

5) Between individual gluing actions, place the gun on the support stand / rest.

6) Remove glue residue after cooling with a sharp knife. The glued junction can be separated again by heating. The glued junction can be painted.



**WARNING:** Do not place the heated glue gun on the support stand or have the nozzle pointed downwards for a long period of time when using! The glue will continue to slowly flow from the nozzle!



**WARNING:** The glue gun should be switched off and allowed to cool down after continuous use.

## 3. WORKING HINTS FOR YOUR GLUE GUN

1) Keep the glue stick clean to prevent impurities from clogging the nozzle.

2) After the glue stick is inserted, do not pull it out from the gun.

3) After heated, if the glue gun is not used for more than 15 minutes, turn off the power switch and disconnect from the mains power supply.

4) Avoid using the glue gun in a humid environment, which may result in electric shock.

5) Do not disassemble the glue gun by yourself.



## CARE AND CLEANING

**Remove the plug from the socket before carrying out any adjustment, servicing or maintenance.**

Your power tool requires no additional lubrication or maintenance. There are no user serviceable parts in your power tool. Never use water or chemical cleaners to clean your power tool. Wipe clean with a dry cloth. Always store your power tool in a dry place. Keep all working controls free of dust.

If the supply cord is damaged, it must be replaced by the manufacturer, its service agent or similarly qualified persons in order to avoid a hazard.

- Use only a damp cloth to clean the enclosure.
- Do not use any chemical or abrasive cleaners.
- When the tool is not used for long periods of time, it should be protected from dust and stored in a clean dry place out of the reach of children. Do not place other objects on the product.
- Clean it with soft cloth. If the dust is uneasy to wipe away, rub it with soap water.
- **WARNING!** unplug the tool before cleaning.

## TROUBLESHOOTING

Use this section to help you to try and solve any problems you may have:

PROBLEM	POSSIBLE CAUSES	REMEDIES
The tool is not operating.	<ul style="list-style-type: none"><li>• The plug is not fully inserted into the wall outlet.</li><li>• Faulty power switch</li></ul>	<ul style="list-style-type: none"><li>• Make sure that the plug is fully inserted into the base AC wall outlet.</li><li>• Contact Customer Service Centre.</li></ul>
After power on for 5 minutes, the glue gun stays cool.	<ul style="list-style-type: none"><li>• Damaged power switch / socket.</li><li>• The heater is broken.</li></ul>	<ul style="list-style-type: none"><li>• Change to another switch / socket.</li><li>• Contact Customer Service Centre.</li></ul>
The glue gun is not dispensing glue normally during use.	<ul style="list-style-type: none"><li>• Check to see if the glue gun is cool.</li><li>• The nozzle is blocked.</li></ul>	<ul style="list-style-type: none"><li>• Follow the remedies listed above.</li><li>• Contact Customer Service Centre.</li></ul>

**NOTE:** IF YOU EXPERIENCE A PROBLEM WITH YOUR POWER TOOL, PLEASE DO NOT ATTEMPT TO OPEN OR REPAIR THE POWER TOOL YOURSELF. DOING SO MAY VOID THE WARRANTY AND COULD CAUSE DAMAGE OR PERSONAL INJURY. IF THE PROBLEM STILL PERSISTS, PLEASE CONTACT US BY REFERRING TO THE SERVICE & SUPPORT INFORMATION ON THE FOLLOWING PAGE.

## DECLARATION OF CONFORMITY / PERFORMANCE



**Product Code: AB762 (PGG15F.1)**

**Product Description: 15W Glue Gun**

1. Toolstation (company number 04372131)

This declaration of conformity is issued under the sole responsibility of Toolstation

2. Object of the declaration

The object of the declaration described above is in conformity with the relevant Community harmonisation legislation:

- Electrical Equipment (Safety) Regulations 2016
- Electromagnetic Compatibility Regulations 2016
- The Restriction of the Use of Certain Hazardous Substances in Electrical and Electronic Equipment Regulations

3. References to the relevant standards used (or references to the specifications in relation to which conformity is declared):

- BS EN 60335-1
- BS EN 60335-2-45
- BS EN 62233
- BS EN IEC 55014-1
- BS EN IEC 55014-2
- BS EN IEC 61000-3-2
- BS EN 61000-3-3
- BS EN IEC 63000

4. Additional information:

Signed for and on behalf of Toolstation Limited

## ENVIRONMENTAL INFORMATION



The symbol on the product or its packaging indicates that this product must not be disposed of with your other household waste. Instead, it is your responsibility to dispose of your waste equipment by handing it over to a designated collection point for the recycling of waste electrical and electronic equipment. The separate collection and recycling of your waste equipment at the time of disposal will help conserve natural resources and ensure that it is recycled in a manner that protects human health and the environment. For more information about where you can drop off your waste for recycling, please contact your local authority, or where you purchased your product.

## WARRANTY

Toolstation products deliver reliable service for normal, household use in domestic settings. All Toolstation products are individually tested before leaving the factory.

Your product is under warranty for 2 years from the date of purchase or the date of delivery of the product, if later.

The warranty is subject to the following provisions:

- The warranty does not cover accidental damage, misuse, parts, knobs, or consumable items.
- The product must be correctly installed and operated in accordance with the instructions contained in this manual.
- It must be used solely for domestic purpose.
- The warranty will be rendered invalid if the product is re-sold or has been damaged by inexpert repair.
- Specifications are subject to change without notice.
- The manufacturer disclaims any liability for incidental or consequential damages.
- The warranty is in addition to, and does not diminish your statutory or legal rights.

# **CUSTOMER SUPPORT**

**Helpline: +44 3331 880059**

**Email: [roktor.support@positecgroup.com](mailto:roktor.support@positecgroup.com)**

**Made in China**