

ROMAX Compact III



DE Bedienungsanleitung
EN Instructions for use
FR Instruction d'utilisation
ES Instrucciones de uso
IT Istruzioni d'uso
NL Gebruiksaanwijzing
PT Instruções de serviço
DA Brugsanvisning
SV Bruksanvisning
NO Bruksanvisning
FI Käyttöohje
PL Instrukcja obsługi
CS Návod k používání
TR Kullanım kılavuzu
HU Kezelési útmutató

SL Navodilo za uporabo
SK Návod na obsluhu
HR Upute za uporabu
BG Инструкции за експлоатация
RO Manualului de utilizare
ET Kasutusjuhend läbi
LT Naudojimo instrukcija
LV Lietošanas pamācība
EL Οδηγίες χρήσεως
RU Инструкция по использованию
UK Інструкція з експлуатації
AR دليل الاستخدام
ZH 使用说明书
JA マニュアル



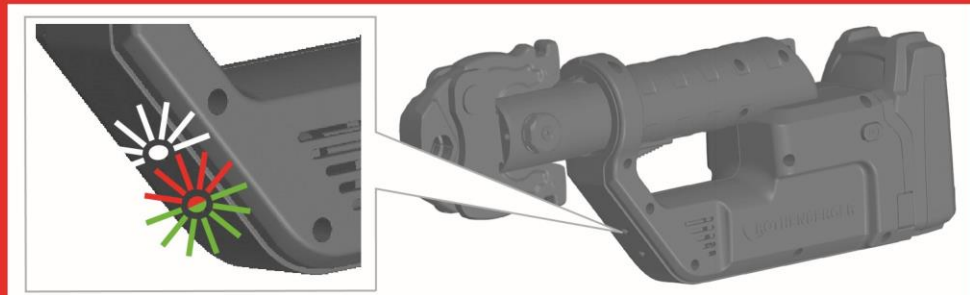


A Changing Battery

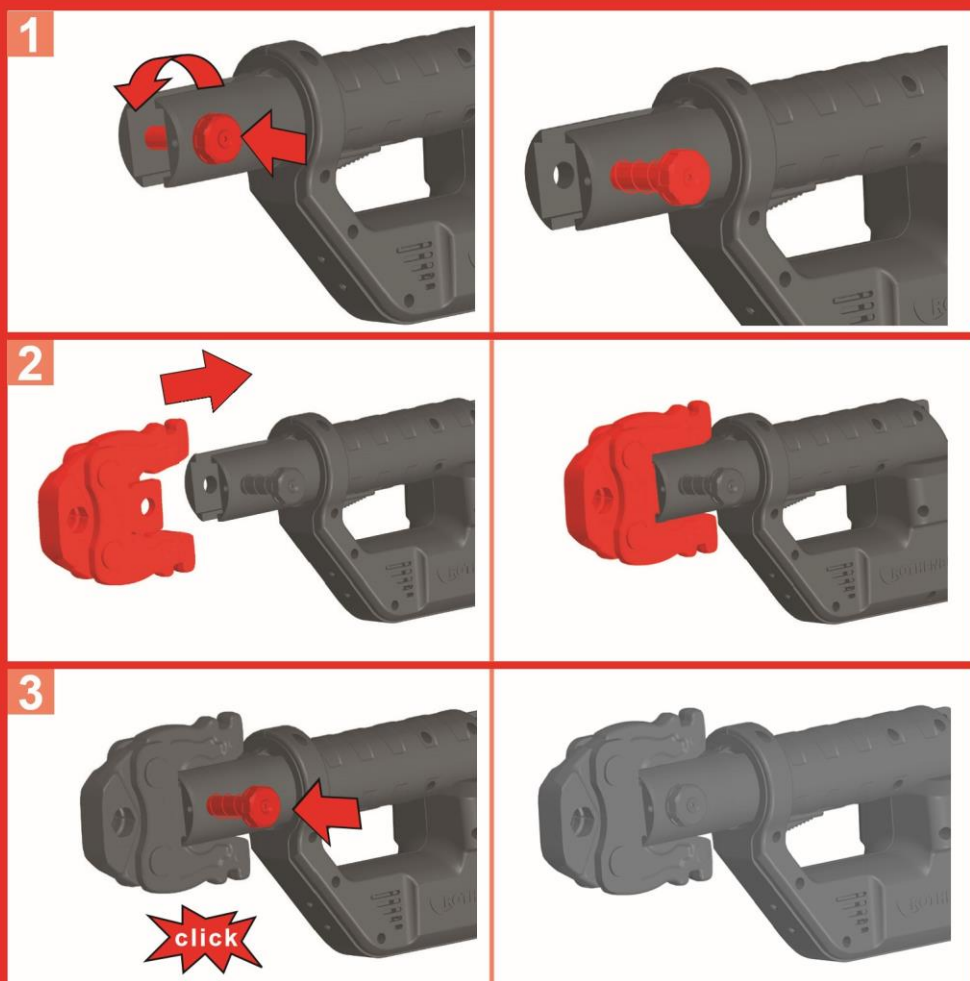


B Emergency-Off / ON-Switch / Positions





Insert Press Jaw D

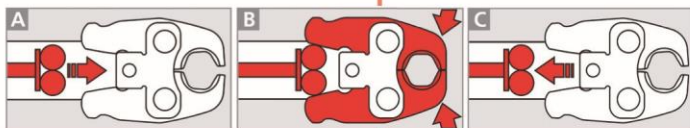


E Operating

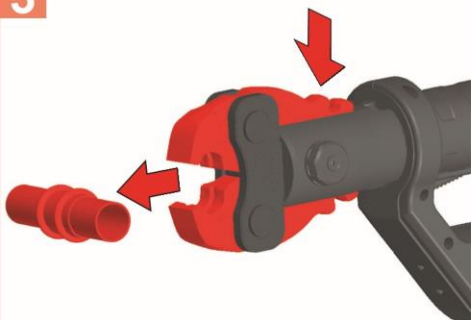
1



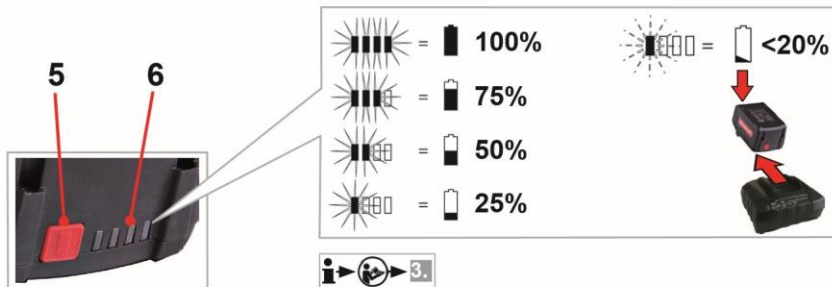
2



3



Charger / Battery F



Battery	art. no.	U	C	W	Ic	t
RO BP18/2	1000001652	18 V	2,0 Ah	400 g	3 A	40 min
RO BP18/4	1000001653	18 V	4,0 Ah	670 g	3 A	80 min
RO BP18/4 Li-HD	1000002548	18 V	4,0 Ah	584 g	3 A	80 min
RO BP18/8 Li-HD	1000002549	18 V	8,0 Ah	977 g	3 A	160 min



Charger	art. no.	U1	f1	P1	U2	I2	Nc	W
RO BC14/36 EU	1000001654	220 - 240V	50 - 60Hz	85W	14 - 42V	3,0 A DC	4 - 10	600g
RO BC14/36 AUS	1000001655	220 - 240V	50 - 60Hz	85W	14 - 42V	3,0 A DC	4 - 10	600g
RO BC14/36 USA CND	1000001656	115V	50 - 60Hz	85W	14 - 42V	3,0 A DC	4 - 10	600g
RO BC14/36 UK	1000001691	220 - 240V	50 - 60Hz	85W	14 - 42V	3,0 A DC	4 - 10	600g
RO BC14/36 JP	1000003033	100V	50 - 60Hz	85W	14 - 42V	3,0 A DC	4 - 10	600g

fig. charger and battery similar

Intro

**ROMAX Compact III:**

2006/42/EG, 2014/30/EU, 2011/65/EU,
2014/53/EU, EN 62841-1, EN IEC 62368-1,
EN 50665, EN IEC 62311, EN 55014-1, EN
55014-2, EN 301 489-1 V2.2.3, EN 301 489-17
V3.2.4, EN 55032, EN 55035, EN 300 328 V2.2.2,
EN IEC 63000

Herstellerunterschrift

Manufacturer/ authorized representative signature

**Charger:**

2014/35/EU, 2014/30/EU, 2011/65/EU, EN 60335-1,
EN 60335-2-29, EN 55014-1, EN 55014-2,
EN 61000-3-2, EN 61000-3-3, EN 50581

Herstellerunterschrift

Manufacturer/ authorized representative signature



Thomas Bamberger
Managing Director

ppa. Soner Tekin
Head of Research &
Development

Kelkheim, 01.08.2023

Technische Unterlagen bei/ Technical file at:
ROTHENBERGER Werkzeuge GmbH
Industriestraße 7
65779 Kelkheim, Germany



ppa. Thorsten Bühl
Director Corporate
Technology



i.A. Maximilian Gottschalk
Teamleader Product
Approval & Patents

Kelkheim, 01.09.2018

Technische Unterlagen bei/ Technical file at:
ROTHENBERGER Werkzeuge GmbH
Spessartstraße 2-4
D-65779 Kelkheim/Germany

1 Safety Notes	13	1.1
Intended use	13	
1.2 General Power Tool Safety Warnings	14	
1.3 Special safety instructions	16	
2 Technical Data ROMAX Compact III		
18 3 Technical Data charger and battery (F)		
18		
4 Function of the Unit	18	4.1
Changing the battery (A)	19	
4.2 EMERGENCY STOP Button (B-1)	19	
4.3 To switch on (B-2)	19	
4.4 To turn the press jaw (B-3)	19	
4.5 LED (C)	19	
4.6 To insert the press jaw (D)	19	
4.7 Operation (E)	19	
4.8 Charger and battery (F)	20	
5 Care and Maintenance	21	6
Accessories	21	7
Customer service	21	8
Disposal	21	

Markings in this document:



Danger!

This sign warns against the danger of personal injuries.

Caution!

This sign warns against the danger of property damage and damage to the environment.



Call for action



This equipment has been tested and found to comply with the limits for a Class B digital device, pursuant to part 15 of the FCC Rules. These limits are designed to provide reasonable protection against harmful interference in a residential installation.

This equipment uses and can radiate radio frequency energy and, if not installed and used in accordance with the instructions, may cause harmful interference to radio communications.

However, there is no guarantee that interference will not occur in a particular installation. If this equipment does cause harmful interference to radio or television reception, which can be determined by turning the equipment off and on, the user is encouraged to try to correct the interference by one or more of the following measures:

- ➔ Reorient or relocate the receiving antenna.
- ➔ Increase the separation between the equipment and receiver.
- ➔ Connect the equipment into an outlet on a circuit different from that to which the receiver is connected.
- ➔ Consult the dealer or an experienced radio/TV technician for help.

WARNING: Only peripherals complying with the FCC class B limits may be attached to this equipment.

Changes or modifications made to this equipment, not expressly approved by us or parties authorized by us could void the user's authority to operate the equipment. This device complies with part 15 of the FCC Rules. Operation is subject to the following two conditions: (1) This device may not cause harmful interference, and (2) this device must accept any interference received, including interference that may cause undesired operation.

1.1 Intended use

The user bears sole responsibility for any damage caused by improper use.

Generally accepted accident prevention regulations and the enclosed safety information must be observed.

ROMAX Compact III

The ROMAX Compact III is designed exclusively for the use of pressing jaws manufactured by ROTHENBERGER or that have been declared suitable by ROTHENBERGER.

The device and the press jaws are designed exclusively for crimp fittings, for which the corresponding pressing jaws have been designed. Any other or additional use shall be deemed improper.

ROTHENBERGER cannot accept any liability for the resultant consequences and damage, nor for the use of pressing jaws from other manufacturers, neither for damage caused by these pressing jaws.

Proper usage also includes compliance with the operating manual, compliance with the inspection and servicing conditions and adherence to all the relevant safety regulations.

The ROMAX Compact III is a handheld electric machine and must not be used for stationary applications.

This device may only be used correctly as described.

Use only original ROTHENBERGER or CAS (Cordless Alliance System) battery packs and accessories.

Charger and battery:

The chargers are only suitable for charging ROTHENBERGER and CAS (Cordless Alliance System) battery packs.

This tool is not designed for use by persons with physical, sensory or mental disabilities, or with insufficient experience and/or knowledge, unless they are supervised by a person responsible for their safety, or have received instructions on how to use the tool by this person.

Never attempt to charge batteries that are not rechargeable. Danger of explosion!

Battery packs marked with CAS are 100% compatible with CAS devices (Cordless Alliance System). To select the appropriate device, please contact your ROTHENBERGER dealer. Read the relevant instructions for the devices used.



1.2 General Power Tool Safety Warnings

WARNING! Read all safety warnings, instructions, illustrations and specifications provided with this power tool.

Failure to follow all instructions listed below may result in electric shock, fire and/or serious injury.

Save all warnings and instructions for future reference.

The term "power tool" in the warnings refers to your electrically-operated (corded) power tool or battery-operated (cordless) power tool.

1) Work area safety

- a) **Keep work area clean and well lit.** Cluttered and dark areas invite accidents.
- b) **Do not operate power tools in explosive atmospheres, such as in the presence of flammable liquids, gases or dust.** Power tools create sparks which may ignite the dust or fumes.
- c) **Keep children and bystanders away while operating a power tool.** Distractions can cause you to lose control.

2) Electrical safety

- a) **Power tool plugs must match the outlet. Never modify the plug in any way. Do not use any adapter plugs with earthed (grounded) power tools.** Unmodified plugs and matching outlets will reduce risk of electric shock.
- b) **Avoid body contact with earthed or grounded surfaces, such as pipes, radiators, ranges and refrigerators.** There is an increased risk of electric shock if your body is earthed or grounded.
- c) **Do not expose power tools to rain or wet conditions.** Water entering a power tool will increase the risk of electric shock.
- d) **Do not abuse the cord. Never use the cord for carrying, pulling or unplugging the power tool. Keep cord away from heat, oil, sharp edges and moving parts.** Damaged or entangled cords increase the risk of electric shock.
- e) **When operating a power tool outdoors only, use an extension cords suitable for outdoor use.** Use of a cord suitable for outdoor use reduces the risk of electric shock.
- f) **If operating a power tool in a damp location is unavoidable, use a residual current device (RCD) protected supply.** Use of an RCD reduces the risk of electric shock.

3) Personal safety

- a) **Stay alert, watch what you are doing and use common sense when operating a power tool. Do not use a power tool while you are tired or under the influence of drugs,**

alcohol or medication. A momentary lack of attention while operating power tools may result in serious personal injury.

- b) **Use personal protective equipment. Always wear eye protection.** Protective equipment such as dust mask, non-skid safety shoes, hard hat, or hearing protection used for appropriate conditions will reduce personal injuries.
- c) **Prevent unintentional starting. Ensure the switch is in the off-position before connecting to power source and/or battery pack, picking up or carrying the tool.** Carrying power tools with your finger on the switch or energising power tools that have the switch on invites accidents.
- d) **Remove any adjusting key or wrench before turning the power tool on.** A wrench or a key left attached to a rotating part of the power tool may result in personal injury.
- e) **Do not overreach. Keep proper footing and balance at all times.** This enables better control of the power tool in unexpected situations.
- f) **Dress properly. Do not wear loose clothing or jewellery. Keep your hair, clothing and gloves away from moving parts.** Loose clothes, jewellery or long hair can be caught in moving parts.
- g) **If devices are provided for the connection of dust extraction and collection facilities, ensure these are connected and properly used.** Use of dust collection can reduce dust-related hazards.
- h) **Do not let familiarity gained from frequent use of tools allow you to become complacent and ignore tool safety principles.** A careless action can cause severe injury within a fraction of a second. **4) Power tool use and care**
 - a) **Do not force the power tool. Use the correct power tool for your application.** The correct power tool will do the job better and safer at the rate for which it was designed.
 - b) **Do not use the power tool if the switch does not turn it on and off.** Any power tool that cannot be controlled with the switch is dangerous and must be repaired.
 - c) **Disconnect the plug from the power source and/or remove the battery pack, if detachable, from the power tool before making any adjustments, changing accessories, or storing power tools.** Such preventive safety measures reduce the risk of starting the power tool accidentally.
 - d) **Store idle power tools out of the reach of children and do not allow persons unfamiliar with the power tool or these instructions to operate the power tool.** Power tools are dangerous in the hands of untrained users.
 - e) **Maintain power tools and accessories. Check for misalignment or binding of moving parts, breakage of parts and any other condition that may affect the power tool's operation. If damaged, have the power tool repaired before use.** Many accidents are caused by poorly maintained power tools.
 - f) **Keep cutting tools sharp and clean.** Properly maintained cutting tools with sharp cutting edges are less likely to bind and are easier to control.
 - g) **Use the power tool, accessories and tool bits etc., in accordance with these instructions, taking into account the working conditions and the work to be performed.** Use of the power tool for operations different from those intended could result in a hazardous situation.
 - h) **Keep handles and grasping surfaces dry, clean and free from oil and grease.** Slippery handles and grasping surfaces do not allow for safe handling and control of the tool in unexpected situations. **5) Battery tool use and care**
 - a) **Recharge only with the charger specified by the manufacturer.** A charger that is suitable for one type of battery pack may create a risk of fire when used with another battery pack.



b) **WARNING! Use power tools only with specifically designated battery packs and respectively battery types.** Use of any other battery packs may create a risk

of explosions, injury and fire.

- c) **When battery pack is not in use, keep it away from other metal objects like paper clips, coins, keys, nails, screws, or other small metal objects that can make a connection from one terminal to another.** Shorting the battery terminals together may cause burns or a fire.
- d) **Under abusive conditions, liquid may be ejected from the battery; avoid contact. If contact accidentally occurs, flush with water. If liquid contacts eyes, additionally seek medical help.** Liquid ejected from the battery may cause irritation or burns.
- e) **Do not use a damaged or modified battery.** Damaged or modified batteries can behave unexpectedly and lead to fires, explosions or injuries.
- f) **Do not expose a battery for fire or high temperatures.** Fire or temperatures above 130°C (265°F) can cause an explosion.
- g) **Follow all the instructions for charging and never charge the battery or the cordless tool outside the temperature range specified in the operating instructions.** Incorrect charging or charging outside the permitted temperature range can destroy the battery and increase the fire risk.

6) Service

- a) **Have your power tool serviced by a qualified repair person using only identical replacement parts.** This will ensure that the safety of the power tool is maintained.
- b) **Never service damaged batteries.** All maintenance of batteries should only be carried out by the manufacturer or authorised customer service points.

1.3 Special safety instructions

The term press jaw also includes main Jaw, press ring and press chain.

ROMAX Compact III

Never hold your fingers or other body parts in the working area of the cylinder or the press jaws. Remove the battery before carrying out any work on the machine.

If the device is so badly damaged that electric cables or drive parts are exposed, disconnect the mains plug immediately and contact your service outlet. Unauthorized repair work may result in the user suffering major injuries or even death.

Only personnel trained in how to use the device may make crimp pipe joints using the ROMAX Compact III.

The machine may only be used with a press jaw inserted into it. The press jaw must be in perfect technical condition.

Only start the machine if it is in perfect working order.

Servicing and repair work may only be carried out by workshops authorized by ROTHENBERGER.

Use only suitable press jaws and press fitting systems that have been approved by ROTHENBERGER.

After you have inserted the press jaw check that the bolt is securely locked.

In the event of problems during the pressing process, press the EMERGENCY STOP button.

Check that the pipe joint is secure after you have completed the pressing process.

Imperfect pipe joints must be compressed again using a new fitting.

Follow the installation instructions supplied by the fitting and pipe manufacturers.

Assure by pressing leaky press fittings that no humidity respectively lotic water reaches into the inside of the machine!

After finishing the work, check the installation with appropriate testing equipment and assure that it is leakproof!

Charger and battery:

This charger is not intended for use by children and persons with physical, sensory or mental limitations or a lack of experience or knowledge. This charger can be used by children aged 8 and above and by persons who have physical, sensory or mental limitations or a lack of experience or knowledge if a person responsible for their safety supervises them or has instructed them in the safe operation of the charger and they understand the associated dangers. Otherwise, there is a danger of operating errors and injuries.

Supervise children during use, cleaning and maintenance. This will ensure that children do not play with the charger.



Do not charge non-rechargeable batteries.

Danger - electrical voltage!!



Only use the charger indoors!

Protect the charger from moisture!

Never allow children to use the machine. Children should be supervised to ensure that they do not play with the tool.

Keep children away from the battery charger and the working area!

Keep your battery charger out of reach of children!

Pull out the mains plug immediately if the battery charger starts to smoke or flames emerge!

Do not insert objects into the ventilation slots on the battery charger – there is a danger of electric shocks and short circuits!

Do not recharge a fully charged battery pack!



Protect battery packs from water and moisture!



Do not expose battery packs to naked flame!

Do not use faulty or deformed battery packs!

In areas with high metal dust exposure do not load any battery packs with AIR COOLED chargers.

Do not open battery packs!

Do not touch or short-circuit battery packs!



Slightly acidic, flammable fluid may leak from defective Li-ion battery packs!



If battery fluid leaks out and comes into contact with your skin, rinse immediately with plenty of water. If battery fluid leaks out and comes into contact with your eyes, wash them with clean water and seek medical attention

immediately!

Transporting li-ion battery packs: The contained lithium-ion batteries are subject to the Dangerous Goods Legislation requirements. The user can transport the batteries by road without further requirements. When being transported by third parties (e.g.: air transport or forwarding agency), special requirements on packaging and labelling must be observed. For preparation of the item being shipped, consulting an expert for hazardous material is required. Only send the battery pack if the housing is intact and no fluid is leaking. Remove the battery pack from the machine for sending. Prevent the contacts from short-circuiting (e.g. by protecting them with adhesive tape).

Dispatch batteries only when the housing is undamaged. Tape or mask off open contacts and pack up the battery in such a manner that it cannot move around in the packaging. Please also observe possibly more detailed national regulations.

2 Technical Data ROMAX Compact III

Battery voltage	18 V
Rated power consumption	281 W
Motor speed.	20400 min ⁻¹
Maximum piston force	max. 21 kN
Pressing time (according to nominal size) ...	ca. 3 s
Dimensions (L x W x H, without battery)	303 x 143 x 76 mm
Weight (without battery)	ca. 2,2 kg
Working range. (system- dependent)	Ø 12 – 40 mm
Application temperature range	5 – 60°C/ 41 – 140°F
Operating mode.....	S3
Sound pressure level (L _{pA})	78 dB (A) K _{pA} 3 dB (A)
Sound power level (L _{WA})	89 dB (A) K _{WA} 3 dB (A)
The noise level during operation can exceed 85 dB (A). Wear hearing protection!	

Measured values determined in accordance with EN 62841-1.

Vibration total value $\leq 2,5 \text{ m/s}^2$ | $K= 1,5 \text{ m/s}^2$

The Vibration Total Value quoted in these instructions and the quoted noise emission values were measured according to standardized measurement procedures and can be used to compare one electric power tool with another. They can also be used to make an initial estimate of the loading.



The quoted vibration and noise emissions can vary during actual use of the electric power tool dependent on the way in which the electric power tool is used, in particular what type of workpiece is being processed. Establish additional safety measures to protect the operator which are based upon an estimate of the vibration loading during the actual usage conditions (in doing so taking account of parts of the operating cycle, for example times in which the electric power tool is switched and those in which it is switched on but not running under load).

3 Technical Data charger and battery

(F)

Battery:

U = Voltage

C = Capacity

W = Weight

Ic = Charge current

t = Approx. charging time (90% full)

Charging voltage 20,75 V DC

Charging temperature .. 0° - 50° C, 32° - 122° F

Max. discharging

temperature. 5° - 50° C, 41° - 122° F voltage! Check the label on the bottom of the charger! Recharge battery pack before first use!

Charger:

U1 = Input voltage

f1 = Input frequency

P1 = Input power

U2 = Charging voltage

I2 = Max. charge current

Nc = No. of battery cells

W = Weight

Pay attention to the electrical outlet

4 Function of the Unit

The device features Bluetooth connectivity, allowing a connection to be established with the ROTHENBERGER app via a smartphone. This enables the user to read specific device information in real-time. Further details about the connectivity function can be found directly in the app, which is available in all common app stores.

Optional:

The device can also be carried to transport it using a shoulder strap obtainable as an optional accessory. Hook the hook on the shoulder strap into the eye.



Using the shoulder strap, the device may only be carried crosswise over the chest and back and must NOT be carried around the neck!

Only wear without the tool used!

4.1 Changing the battery

(A)

Push in the rechargeable battery until audible locking into place occurs. To remove the battery, press on the locking system and remove the rechargeable battery.

4.2 EMERGENCY STOP Button

(B-1)

If there is any danger to personnel or the machine during the pressing process, press the EMERGENCY STOP button immediately and release the ON switch. The valve will open and the piston will return to its initial position.

4.3 To switch on (B-2)

Press the ON button until the pressing process has been completed. The motor cut out indicates the end of the moulding cycle.

A short press on the ON button activates the Bluetooth function and allows you to connect to the app.

4.4 To turn the press jaw (B-3)

The press jaw can be turned through 270° depending on the application.

4.5 LED (C)

White LED lights up for 5s after a short keystroke or completed pressing process.

Green LED lights up briefly after pressing the keystroke - pressing process can be performed.

Green LED lights up after pressing process- the pressing process is completed.

Red LED flashes when the battery is low.

Red LED lights up for 3s after pressing the key if the machine is not ready for operation.

Red LED lights up for 3s after not complete pressing process.

Yellow LED indicates necessary maintenance.

4.6 To insert the press jaw (D)

Remove battery!

- Open the bolt (1).
- Insert the appropriate press jaw for the job in hand (2).
- Lock the bolt (3).

After changing the press jaw it is essential to ensure that, once engaged, the crimping jaw matches the profile being moulded and the nominal width of the fitting being moulded. A visual inspection must be carried out in order to determine that the press jaw is fully closed at the end of the press cycle.

4.7 Operation (E)

Use only system-compatible press fittings and press jaws designed for them. The nominal size of the press jaw must be identical with the nominal size of the press fitting.



When inserting the pipe / press fitting system, there is a risk of crush injuries for the fingers or other body parts near the press jaw!

- Push the press fitting on to the pipe (1). Pull the press jaw apart and insert the pipe with the press fitting at right angles.



There must be no foreign bodies between the press contour and the fitting. If you fail to ensure this, the pressing process will not produce a perfect joint!

- Press the ON button until the pressing process has been completed (2). The motor cut out indicates the end of the moulding cycle.
- Push the press jaw apart and take the machine off the joint (3).

Do not start the machine while the piston retracts or the emergency shutdown is pressed!

4.8 Charger and battery (F)

Overview:

- | | |
|---------------------|---------------------------------|
| 1 Battery pack | 4 Warning display |
| 2 Sliding seat | 5 Capacity indicator button |
| 3 Operation display | 6 Capacity and signal indicator |

Start of operation



Before plugging in, check to see that the rated mains voltage and mains frequency, as specified on the rating label, match your power supply!

Devices such as this one, which generate direct current, may have an effect on basic residual current circuit breakers. Use type F or better, with a release current of max. 30 mA.



Before commissioning the charger, ensure that the air slots are free. Minimum distance to other objects is 5 cm/ 2"

Self-test:

→ Insert mains supply plug.

The warning display (4) and the operating indicator (3) light up one after the other for approx. 1 second and the installed fan runs for approx. 5 seconds.

Battery pack:

Charge the battery pack before use (1).

If performance diminishes, recharge the battery pack.

The ideal storage temperature is between 10°C / 50° F and 30°C / 86° F. The permissible storage temperature is between 0°C and 50°C / 32° - 122° F. **Li-ion battery packs** have a capacity and signal indicator: (6) → Press the button (5), the LEDs indicate the charge level.

If one LED is flashing, the battery pack is almost flat and must be recharged.

Handling

Charging battery pack:

→ Push the battery pack completely to the stop on the sliding seat (2).

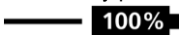


The operating indicator (3) flashes.

Conservation charge:

Once the charging process has finished, the battery charger automatically switches to conservation mode.

The battery pack can remain in the battery charger and is therefore always ready for use.



The operating display (3) lights up continuously.

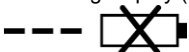
Fault:

- Warning display (4) lights up continuously.



Battery pack is not charged. Temperature too high/ too low. When the temperature of the battery pack is between 0 °C and 50 °C / 32° - 122° F, the charging process begins automatically.

- Warning display (4) flashes.



Battery pack is defective. Remove the battery pack immediately from the charger.

The battery pack was not pushed correctly onto the sliding seat (2).

5 Care and Maintenance

ROMAX Compact III

Remove the battery prior to carrying out any work on the machine.

Check that the press jaws are fully functional. Damaged press jaws must not be used and must be sent to an authorised ROTHENBERGER repair shop.

Check that the press jaw and drive rolls move freely.

Check the bolt for signs of damage at regular intervals. Have damaged bolts replaced by an authorised ROTHENBERGER repair shop.

Clean and grease the drive rolls, the bolt and press jaws when you have finished work.

Use only high quality pressing or ball bearing grease.

The pressing contour must be kept free of grease.

All other servicing, maintenance and repair work must be carried out by an authorized ROTHENBERGER repair shop.

If the seal is damaged the warranty will be null and void.

After 40.000 pressing cycles or 2 years have the machine serviced by an authorized ROTHENBERGER workshop.

When dispatching the machine ensure that it is packed in its carrying case completely with battery and charger in the carry case only.

Electro-hydraulic machine does not exceed 3 hours in a -5° C / 23°F storage.

Charger:

Repairs to the charger must only be carried out by qualified electricians.

If the mains connection cable of this tool is damaged, in order to prevent endangering personnel and property it must be replaced by the manufacturer, or the Customer Service of the manufacturer, or a similarly qualified person.

6 Accessories

You can find suitable accessories in the main catalog or at www.rothenberger.com

7 Customer service

The ROTHENBERGER service locations are available to help you (see listing in catalog or online) and replacement parts and service are also available through these same service locations. Order your accessories and spare parts from your specialist retailer or using RO SERVICE+ online: ☎ + 49 (0) 61 95/ 800 8200 *sf* + 49 (0) 61 95/ 800 7491 ✉ service@rothenberger.com - www.rothenberger.com

8 Disposal

Components of the unit are recyclable material and should be put to recycling. For this purpose registered and certified recycling companies are available. For an environmental friendly disposal of the non-recyclable parts (e.g. electronic waste) please contact your local waste disposal authority.



Do not dispose of power tools and batteries/rechargeable batteries into household waste.

For EU countries only: According to the Directive 2012/19/EU on waste electrical and electronic equipment and its transposition into national law, power tools that are no longer usable, and, according to the Directive 2006/66/EC, defective or drained batteries must be collected separately and disposed of in an environmentally correct manner.

Only for United Kingdom: According to The Waste Electrical and Electronic Equipment Regulations 2013 (SI 2013/3113) (as amended) and the Waste Batteries and Accumulators Regulations 2009 (SI 2009/890) (as amended), products that are no longer usable must be collected separately and disposed of in an environmentally friendly manner.



ROTHENBERGER Werkzeuge GmbH

Industriestraße 7

D-65779 Kelkheim / Germany

Telefon +49 6195 / 800 - 0

Telefax +49 6195 / 800 - 3500

info@rothenberger.com



Änderungen und Irrtümer vorbehalten

rothenberger.com