

SIP Industrial Products Limited  
Gelders Hall Road  
Shepshed  
Loughborough  
Leicestershire  
LE12 9NH  
United Kingdom

# SIP Air Hub Wall Mounted Air Compressor 05323



For help or advice please  
contact your distributor, or sip  
directly on: Tel.: 01509 500400  
Email: [sales@sip-group.com](mailto:sales@sip-group.com) or  
[technical@sip-group.com](mailto:technical@sip-group.com)  
[www.sip-group.com](http://www.sip-group.com)





# CONTENTS

Page No.	Description
4.	Safety Instructions
6.	Electrical Connections
8.	Guarantee
9.	Your Compressor
10.	Technical Specification
11.	Assembly Instructions
12.	Operating Instructions
14.	Maintenance
15.	Troubleshooting
16.	Exploded Drawing
17.	Part List
18.	UK - Declaration Of Conformity
19.	EU - Declaration Of Conformity

## SAFETY INSTRUCTIONS



Danger / Caution: This image indicates risk of personal injury and/or the possibility of damage.



Warning: This image indicates risk of electrical injury or damage!



Note: This image indicates supplementary information.



Important: Please read the following instructions carefully, failure to do so could lead to serious personal injury and / or damage to the item.

Before using your compressor it is in your own interest to read and pay attention to the following safety rules.

1. Compressed air is dangerous. Do not point the jet of air at persons or animals and do not discharge compressed air against the skin.
2. DO NOT operate your compressor with any protection guard removed.
3. Repairs must only be carried out by a qualified engineer. If problems occur, contact your dealer.
4. Before carrying out any maintenance, make sure that the pressure is released from the air tank and that the compressor is disconnected from the electrical supply.
5. DO NOT leave pressure in the receiver overnight, or when transporting.
6. DO NOT adjust, or tamper with the safety valves. The maximum pressure is factory set, and clearly marked on the compressor.
7. DO NOT operate in wet or damp conditions. Keep the compressor dry at all times. Similarly, clean air will allow the compressor to work efficiently. Do not use in dusty or otherwise dirty locations.
8. Some of the metal parts can become quite hot during operation. Do not touch these until the compressor has cooled down.
9. Always set the pressure regulator to the recommended setting for the tool.
10. When spraying flammable materials e.g. cellulose paint, ensure that there is

## SAFETY INSTRUCTIONS

sufficient airflow and keep clear of any source of ignition.

11. Before spraying any material always consult paint manufacturers instructions for safety and usage.
12. Protect yourself. Safety glasses will protect your eyes from flying particles. Face masks will protect you against paint spray and fumes.
13. Do not apply strain to electrical cables and make sure that air hoses are not kinked or wrapped around the compressor.
14. When disconnecting air hoses or other equipment from your compressor, make sure that the air supply is turned off at the outlet and vent all pressurised air from within the tank and other equipment attached to it.
15. Make sure that children and animals are kept well away from the compressor and any equipment attached to it.
16. Make sure that all individuals using the compressor have had the necessary training and have read and fully understand these operating instructions.
17. Make sure that any equipment or tool used in conjunction with your compressor has a safe working pressure exceeding that of the compressor.
18. Be careful when transporting the compressor to prevent tipping over
19. Permanently installed systems must be installed by a competent engineer.
20. These compressors produce noise levels in excess of 70dB(A). Persons working near the compressor must be supplied with ear protection.



This compressor contains surfaces which may reach a high temperature during operation. Never operate with the motor housing removed.



Wear safety glasses when using this compressor.

## ELECTRICAL CONNECTIONS

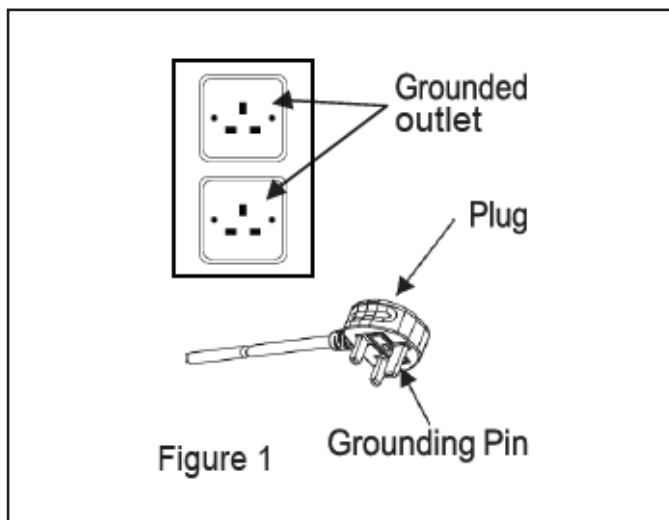


**WARNING:** Read these electrical safety instructions thoroughly before connecting the product to the mains supply.

This compressor is for use with a 230v UK domestic socket and should be grounded/earthed. Make sure that the product is connected to an outlet that has the same configuration as the plug (see Figure 1). If an extension lead is used, make sure the cable size is sufficient as to be able to take the current of the compressor.

Check with a qualified electrician if the grounding instructions are not understood or there is doubt as to whether the product is properly grounded. Do not modify the plug provided. If it will not fit the outlet, have the proper outlet installed by a licensed electrician.

Improper installation of the grounding plug will result in a risk of electric shock. If repair or replacement of the cable or plug is necessary, consult a qualified electrician.



We strongly recommend that this machine is connected to the mains supply through a Residual Current Device (RCD).

If you are not sure, consult a qualified electrician. DO NOT try to do any repairs.

## ELECTRICAL CONNECTIONS



**NOTE:** Always make sure the mains supply is of the correct voltage and the correct fuse protection is used. In the event of replacing the fuse always replace the fuse with the same value as the original.



**WARNING:** Improper use of extension leads may cause inefficient operation of the item which can result in overheating and motor damage.



**WARNING:** The wires in the power cable of this product are coloured in accordance with the following code:  
Blue = neutral / Brown = live / Yellow and Green = earth

## GUARANTEE

This item is covered by a 24 month parts and labour warranty covering failure due to manufacturers defects. This does not cover failure due to misuse or operating the item outside the scope of this manual - any claims deemed to be outside the scope of the warranty may be subject to charges Including, but not limited to parts, labour and carriage costs.

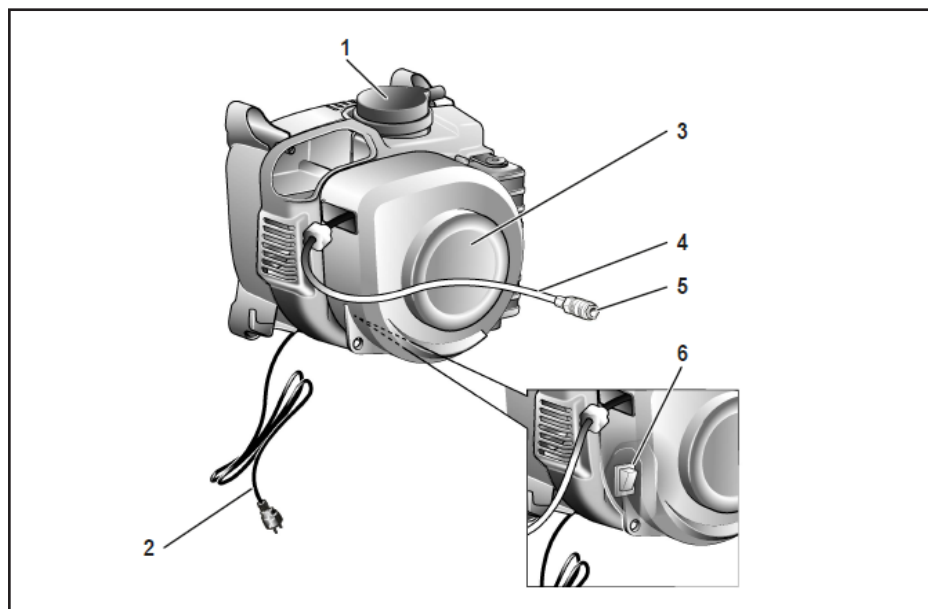
Consumable items such as air filters are not covered by the warranty.



NOTE: Proof of purchase will be required before any warranty can be honoured.



## YOUR COMPRESSOR



Item No.	Description	Item No.	Description
1.	Air Filter	4.	Air Hose
2.	Mains Cable	5.	Quick Coupling
3.	Air Hose Reel	6.	On/Off Switch

## TECHNICAL SPECIFICATION

Model No.	05323
Input Voltage	230V ~ 50 Hz
Power	1.1 KW / 1.5 HP
Speed	2000 rpm
Pressure	8 Bar
Air Displacement	160 L/min - 5.7 CFM
Duty Cycle	S3 25%
Product Dimensions	300mm x 300mm x 300mm
Noise	87.30 dB
Product Weight	7.17 Kg



NOTE: This product is not fitted with a pressure cut off switch. The motor will continue to run once switched on. Switch off the compressor when air is not required. **Do not run for more than 5 minutes continually**

# ASSEMBLY INSTRUCTIONS

## Contents & Accessories

- » Air compressor
- » Assembly instruction sheet
- » Rubber Spacers (4)
- » Instruction manual and other documents
- » Air Duster Gun
- » Tyre Inflator
- » 3 Inflating Needles



NOTE: If any parts are missing, please contact SIP Customer Service.



Danger / Caution: Before starting the machine, check that all covers and safety equipment are correctly fitted.

## Preparation

Before beginning the installation of the product make sure all the parts are present. The tools below are required but not supplied.

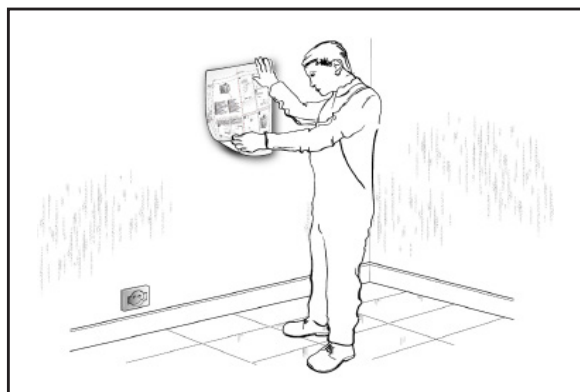
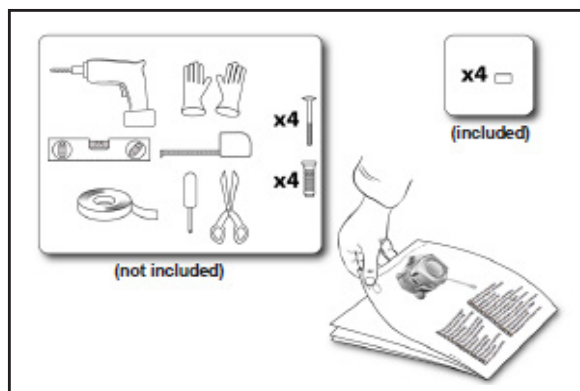
- » Measuring tape
- » Adhesive tape
- » Scissors
- » Spirit level
- » Power drill
- » Philip screwdriver
- » Screws (4)
- » Wall plugs (4)

## Installation Instructions For Wall Fixing

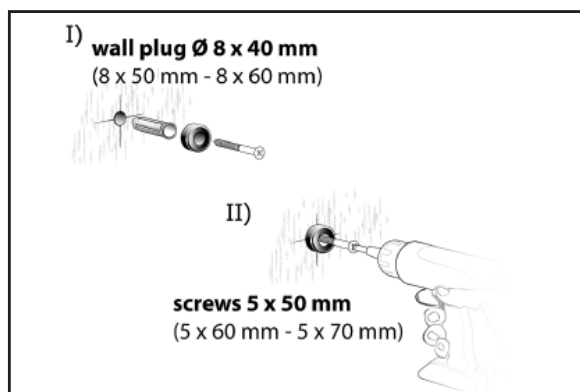
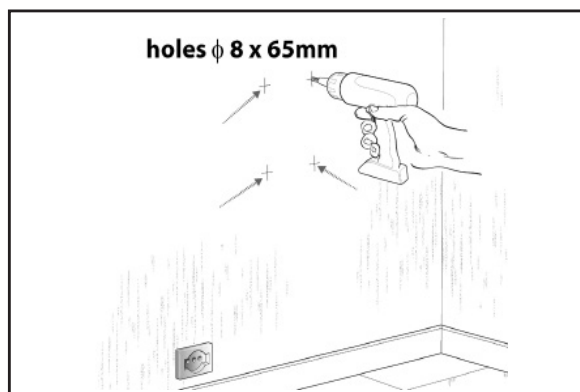
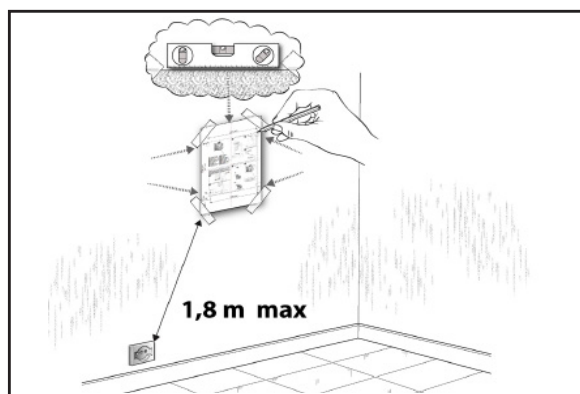
- Use the instructions sheet (supplied) as a template to mark the points where to make the holes for fixing.
- Remove and keep the sheet for future consultation and/or reuse.
- With an 8 mm drill bit, drill four holes in the wall, and insert the wall plugs.

## ASSEMBLY INSTRUCTIONS

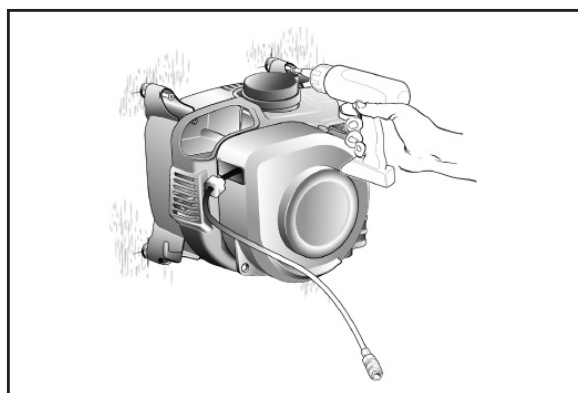
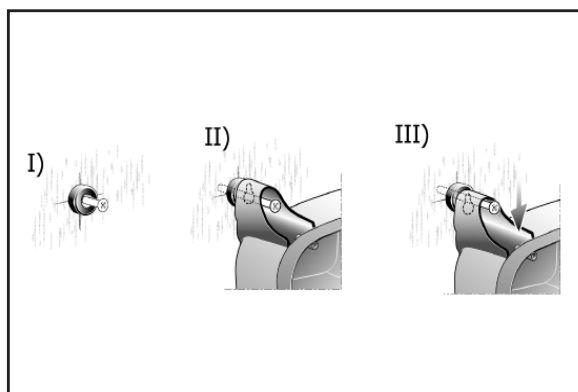
- Insert the screws, taking care to previously insert the rubber spacers.
- Almost fully tighten the screws.
- Place the compressor in correspondence with the four screws, then hang it taking care to insert each slot of the compressor frame onto the screws.
- Gently lower the compressor, so that all four screws can be inserted into the narrow shape of the slot.
- Fully tighten the four screws.



# ASSEMBLY INSTRUCTIONS



## ASSEMBLY INSTRUCTIONS



# OPERATING INSTRUCTIONS

## Overview

This compressor has been designed for the generation of compressed air for air tools and any application which requires it, in accordance with the parameters specified on this user manual. The machine is to be used only for its prescribed purpose. Any other use is deemed to be a case of misuse.



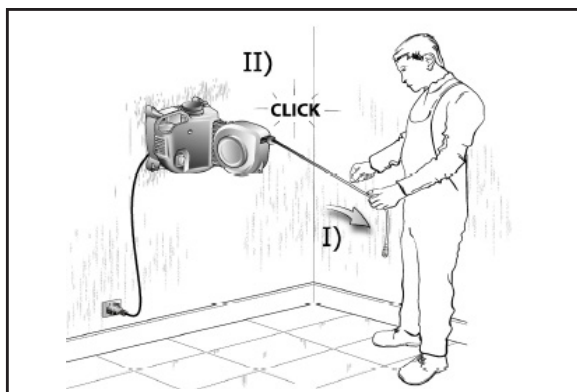
**Danger / Caution:** Escaping air and moisture can propel debris that may cause eye injury. Wear safety glasses and appropriate PPE when opening the compressor.



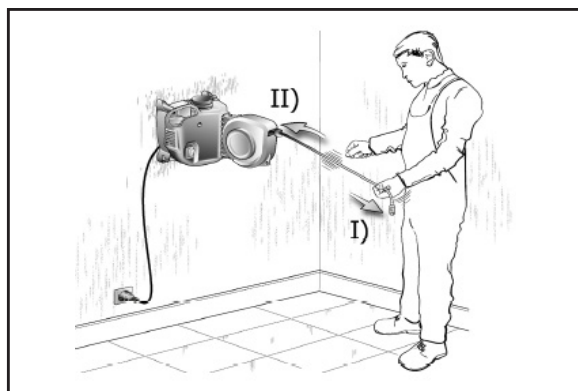
**Danger / Caution:** This compressor contains surfaces which may reach a high temperature during operation. Never operate with the motor housing removed. Do not touch the compressor whilst it is running.

## Start-up And Use Of The Compressor

1. Make sure the On/Off switch is on the OFF position.
2. Plug in the mains lead onto the socket.
3. Set the hose at the desired length. The reel is built with an automatic locking mechanism that allows the unwinding and winding. The locking system produces a metallic sound when the lock is inserted, but it should be checked before releasing the grip. Loosen the lock by pulling the extension hose outwards. Never let the hose rewind in an uncontrolled way.



# OPERATING INSTRUCTIONS



4. Connect the desired pneumatic tool to the quick coupling.
5. Switch On the compressor as it is ready to use.



Danger / Caution: Burst Risk. Too much air pressure causes a hazard of bursting. Check the manufacturers maximum pressure rating for air tools & accessories. The regulator outlet must never exceed the maximum rated pressure.

## How To Stop & Shut-Down The Compressor

1. Switch Off the compressor.
2. Release the pressure which is trapped onto the air system.
3. Rewind the hose completely, putting all it in its housing.
4. Unplug the mains lead of the socket.
5. If the compressor is going to be used again, allow at least 10 seconds from the moment when it was switched off.



NOTE: This product is not fitted with an air receiver. If no air is being drawn from the air hose and once the air hose is full of air then air will be released from the relief valve. It is normal to hear air being released after the compressor has been turned off.



NOTE: This product is not fitted with a pressure cut off switch. The motor will continue to run once switched on. Switch off the compressor when air is not required. **Do not run for more than 5 minutes continually**



## MAINTENANCE

**Before carrying out any operation, always switch off the compressor.**

- **Cleaning and storage**

Clear dust from the machine at regular intervals, if used in a dirty environment the machine should be cleaned after each use.

If the machine is not going to be used for a long time, store it in the original packing and in a dry place.

- **Change the Air Filter**

The air filter should be changed after 100 hours of use. Please, get in touch with SIP customer service for more information.

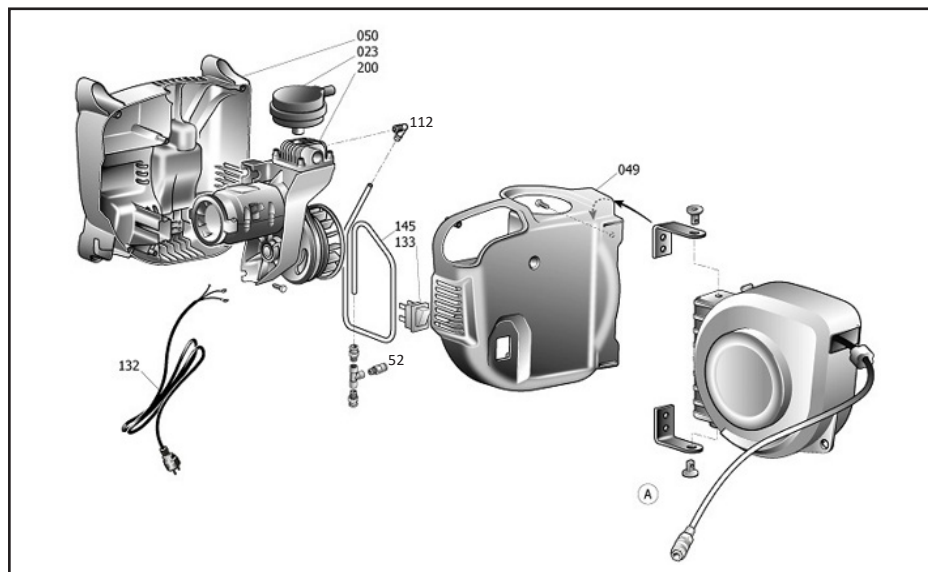


## TROUBLESHOOTING

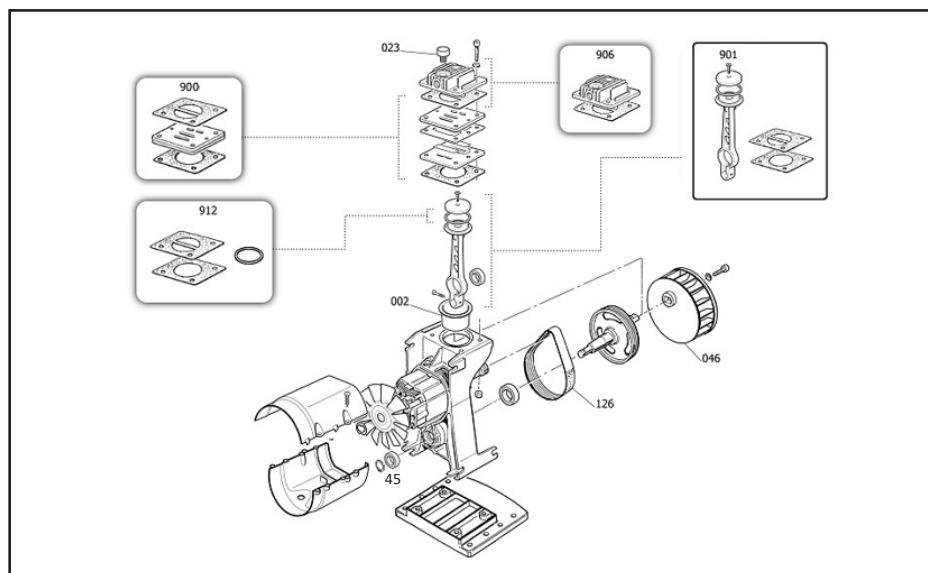
FAULT	CAUSE	REMEDY
The compressor stops and restarts automatically after a few minutes.	Tripping of the thermal cut-out due to overheating of the motor.	Allow the compressor to cool down. Ventilate the work area.
After a few attempts to restart, the compressor stops.	Tripping of the thermal cut-out due to overheating of the motor (removal of the plug with the compressor running, low power voltage).	Activate the On/Off switch. Ventilate the work area. Wait a few minutes. The compressor will restart independently.

# EXPLODED DRAWING

## Compressor



## Pump



## PART LIST

### Compressor

No.	Description
23	Air Filter Assembly
49	Front Housing
50	Rear Housing
52	Exhaust Valve
112	Elbow
132	Power Cable
133	Switch
145	Delivery Pipe
200	Bare Pump

### Pump

No.	Description
1	Casing
2	Cylinder
3	Head - Remove
4	Shaft
19	Washer
30	Bearing
45	Circlip
46	Fan
126	Poly V Belt
900	Valve Plate Kit
901	Piston / Con-Rod Kit
906	Cylinder Head Kit
912	Piston Ring Kit



## Declaration of Conformity

We

SIP (Industrial Products) Ltd  
Gelders Hall Road  
Shepshed  
Loughborough  
Leicestershire  
LE12 9NH  
England

As the manufacturer within the UK, England, Scotland & Wales,  
declare that the

SIP AirHub Wall Mounted Air Compressor - SIP Part No. 05323

**Conforms to the requirements of the following regulation(s), as indicated.**

Supply of Machinery (Safety) Regulations 2008  
Electromagnetic Compatibility - Directive 2014/30/EU  
The Restriction of the Use of Certain Hazardous Substances in Electrical and Electronic  
Equipment Regulations 2012  
Noise Emissions in the Environment for Equipment for use Outdoors Regulations 2001

Noise measurements have been made in accordance with the internal control  
of production (Schedule 45/Annex V). The declared noise values are as follows:

Guaranteed sound power level - 87.30dB(A)

**And the relevant harmonised standard(s), including**

BS EN 1012-1:2010  
BS EN 60204-1:2018  
BS EN 55014-1:2019+A11:2020  
BS EN 55014-2:2016  
BS EN 61003-3-2:2019  
BS EN 61003-3-3:2014+A1:2020

Signed:



Mr P. Ippaso - Managing Director - SIP (Industrial Products) Ltd  
Date: 03/03/2022

**UK  
CA**

# EU - DECLARATION OF CONFORMITY

## Declaration of Conformity

We

SIP (Machinery Europe) Ltd  
ASM Chartered Accountants  
First Floor Block One  
Quayside Business Park  
Dundalk  
County Louth  
Republic of Ireland

As the manufacturer's authorised representative within the EC  
declare that the

SIP AirHub Wall Mounted Air Compressor - SIP Part No. 05323

**Conforms to the requirements of the following directive(s), as indicated.**

2006/42/EC - Machinery Directive  
2014/30/EU - EMC Directive  
2011/65/EU - RoHS Directive  
2000/14/EC - Noise Emission Directive

Noise measurements have been made in accordance with the internal control  
of production (Schedule 45/Annex V). The declared noise values are as follows:

Guaranteed sound power level - 87.30dB(A)

**And the relevant harmonised standard(s), including**

EN 1012-1:2010  
EN 60204-1:2018  
EN 55014-1:2019+A11:2020  
EN 55014-2:2016  
EN 61003-3-2:2019  
EN 61003-3-3:2014+A1:2020

Signed:



Mr P. Ippaso - Managing Director - SIP (Industrial Products) Ltd  
Date: 03/03/2022





Please dispose of packaging for the product in a responsible manner. It is suitable for recycling. Help to protect the environment, take the packaging to the local amenity tip and place into the appropriate recycling bin.

Never dispose of electrical equipment or batteries in with your domestic waste. If your supplier offers a disposal facility please use it or alternatively use a recognised recycling agent. This will allow the recycling of raw materials and help protect the environment.

**FOR HELP OR ADVICE ON THIS  
PRODUCT PLEASE CONTACT  
YOUR DISTRIBUTOR, OR SIP  
DIRECTLY ON:**

**TEL: 01509 500400**

**EMAIL: [sales@sip-group.com](mailto:sales@sip-group.com) or  
[technical@sip-group.com](mailto:technical@sip-group.com)  
[www.sip-group.com](http://www.sip-group.com)**

\*Photographs are for illustration purposes only.

Ref: 03032022