



WARNING

THOR

USER GUIDE - 28090T

32-55"

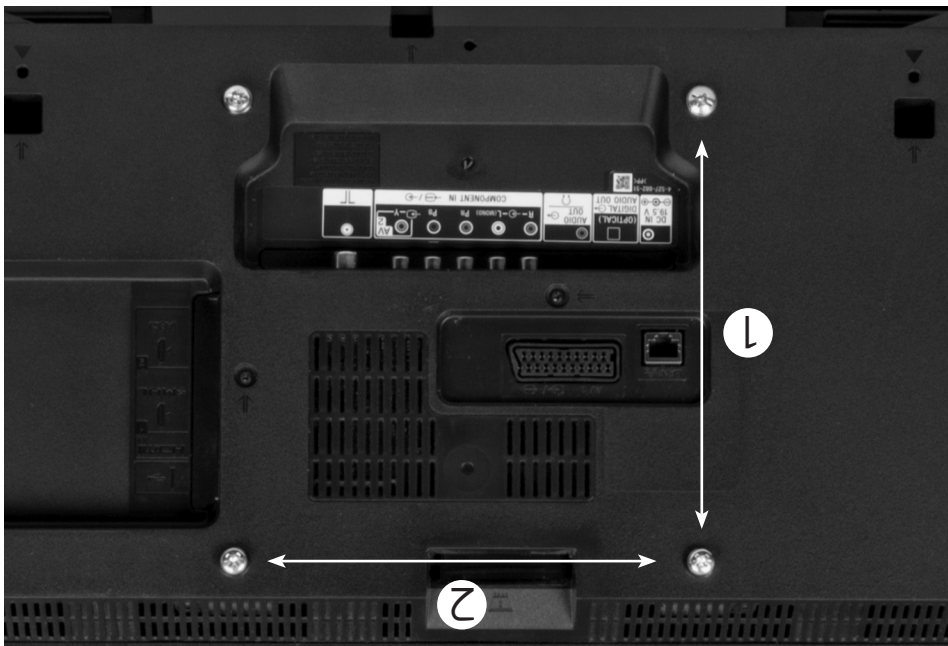
Large Display Ceiling TV Mount

- Recommendation: Installation and fitting of this product should be carried out by an experienced and competent installer.
- We have not supplied ceiling fixings with this product. All ceilings differ in strength and thickness. Consult a qualified installer.
- Check the components list and images to check there are no missing or defective parts.
- Never exceed the Maximum Weight Capacity.
- Read these instructions carefully before installation. If in any doubt about safely installing this product, contact a professional installer for assistance.
- This product was designed to be installed on wood ceilings and solid concrete/brick ceilings. When fixing to ceilings screws/bolts should be fixed into bricks/stone not into mortar courses.
- Make sure the ceiling will support the combined load of the equipment and hardware. Also check for hidden wiring or plumbing.
- Make sure that the heads of the screws/ bolts you buy as wall fastenings are the correct size to hold the bracket securely in position.
- For larger/heavier TVs we recommend that you ask someone to assist you with lifting and positioning your TV.
- This product is suitable for indoor use only.
- Improper installation or use of this product can result in product failure, damage or personal injury.
- This product contains small items that could cause choking if swallowed, so keep these items away from children and pets.
- Appropriate safety equipment and proper tools must be used for installation. Always check manufacturer's operating and safety instructions before using tools and other equipment.
- Check that the bracket is secure and safe to use at regular intervals (at least every three months).

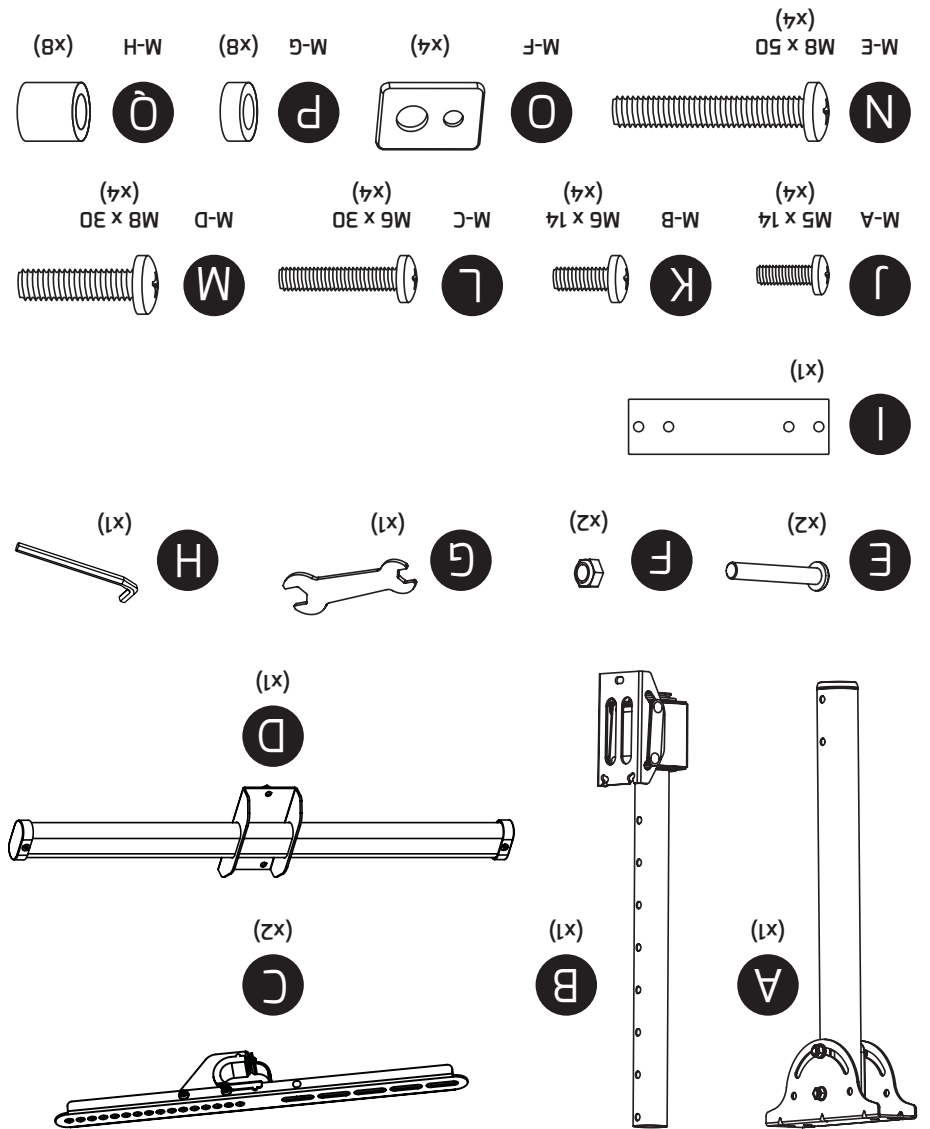
UK Distributor: Philex Electronic Ltd.,
London Road, Bedford, MK42 0NX, U.K.
EU Distributor: Philex Electronic Ireland Ltd.,
Robwyn House, Corrintra, Castleblayney,
Co. Monaghan, A75 YX76, Ireland.



- TV Size range: **32-55"**
- Maximum weight capacity: **50kg**
- Mount function: **Full Motion tilt and swivel**
- Extends: **560-910mm**
- Compatible with VESA sizes: **200 x 200, 400 x 200, 300 x 300, 300 x 200, 400 x 300, 400 x 400**



- VESA is the standard adopted by most TV manufacturers for wall bracket mounting.
- There are 4 holes on the back of every flat screen TV and the space between the holes is governed by the VESA standard.
- VESA comes in a range of sizes depending on the weight and size of the flat screen TV; sizes 50 x 50mm, 75 x 75mm, 100 x 100mm, 200 x 100mm and 400 x 200mm are standard. Not all flat screen TVs are compliant, contact the TV manufacturer for assistance if your TV does not appear to comply with VESA.
- To check if your TV or monitor is compliant, look at the rear of the display there should be 4 screw-holes in a square pattern or in larger displays a rectangular shape.
- Measure the distances marked (2) (horizontal) x (1) (vertical) below in mm to find your VESA format.

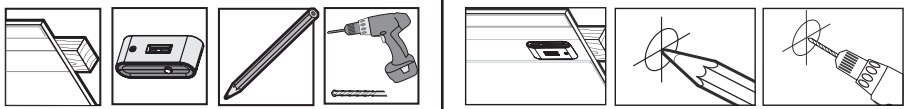


Before installation check that you have all the components shown here and that none of them are damaged.

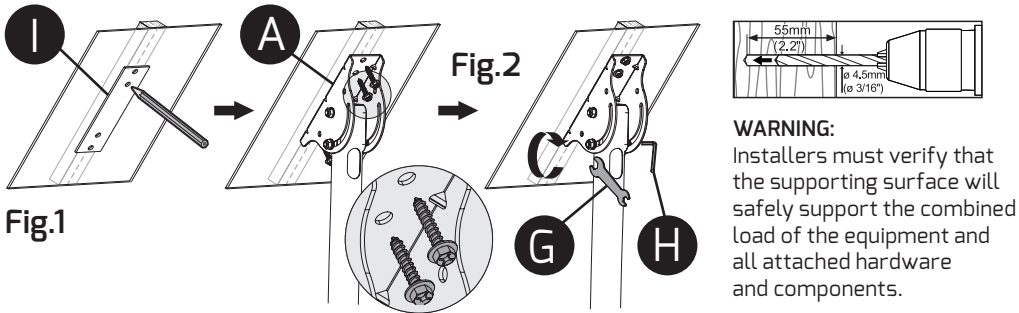
Ceiling Mount & VESA Compatibility

Components

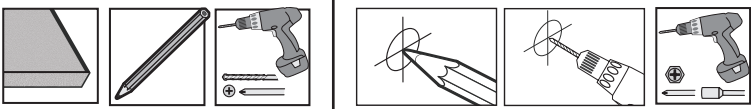
1a. Preparing Ceiling Fixings - Stud Ceiling
Tools required



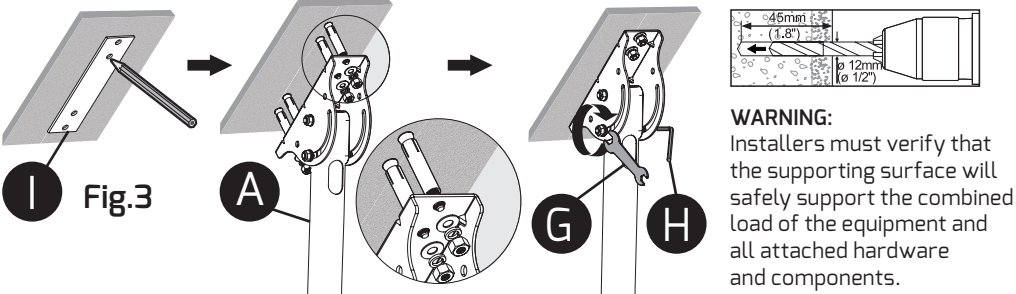
The ceiling mount is attached to the ceiling using four appropriate screws/bolts as shown in Fig.2. Make sure the screws/bolts are suitable for wood and large enough to support the weight of the TV and mount (if in doubt ask for advice at your local DIY/hardware store and remember to make sure that the heads of the screws/bolts are the correct size to hold the bracket securely in position). Mark and drill four holes into the wood as close as possible to the centre of the joist. To mark the holes, hold the back mounting plate **I** to the ceiling, and mark the centre of each hole, see Fig.2. Drill the four holes and attach the top half of the mount **A** to the ceiling using the appropriate screws/bolts. Use the spanner **G** and Allen key **H** supplied to tighten the fixings.



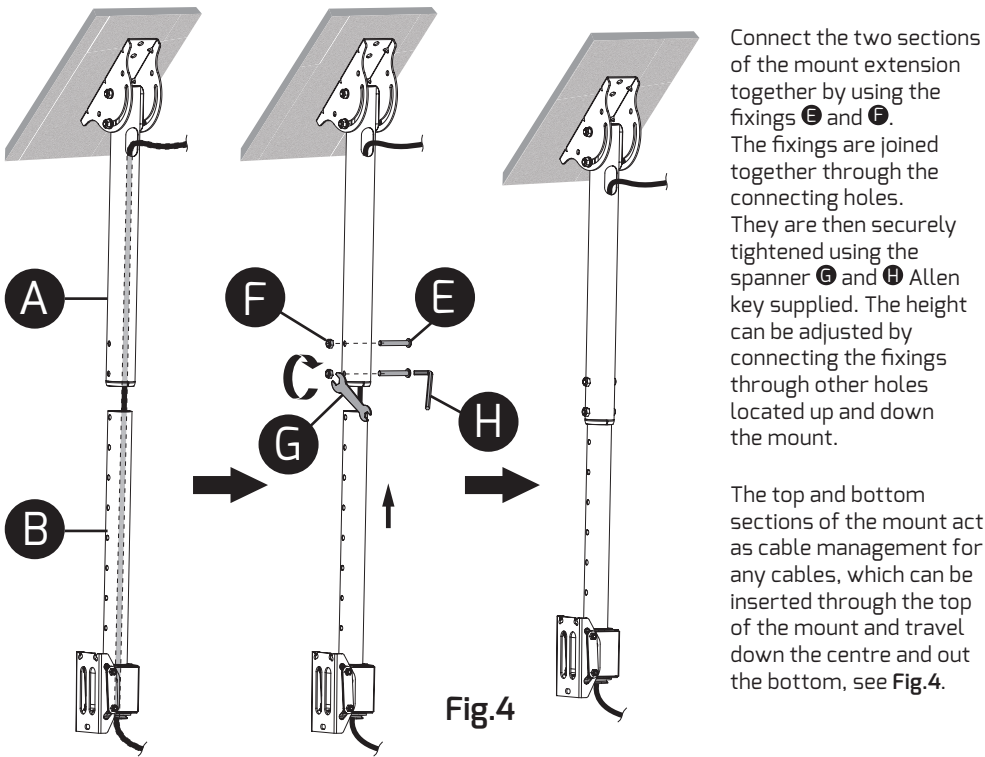
1b. Preparing Ceiling Fixings - Concrete/Brick Ceiling
Tools required



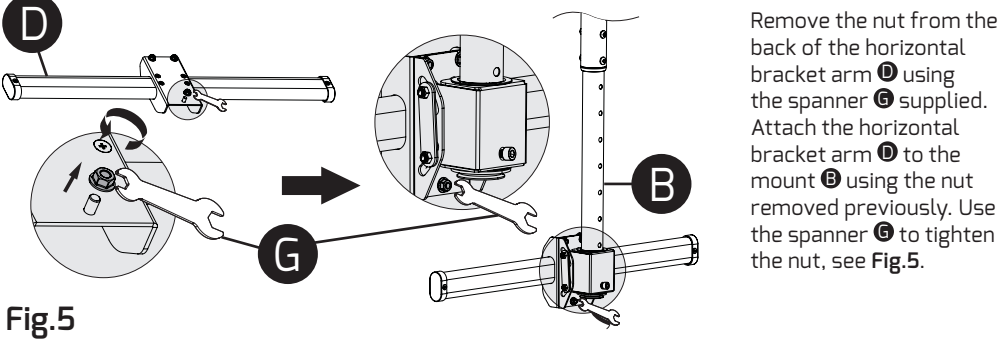
The process is the same as for attaching to wood see Fig.2. You will however need to use four suitable screws/bolts/wall plugs for the type of ceiling you are mounting onto (if in doubt ask for advice at your local DIY/hardware store and remember to make sure that the heads of the screws/bolts are the correct size to hold the mount securely in position). When fixing to ceilings, screws/bolts should be fixed into bricks/stone not into mortar courses.



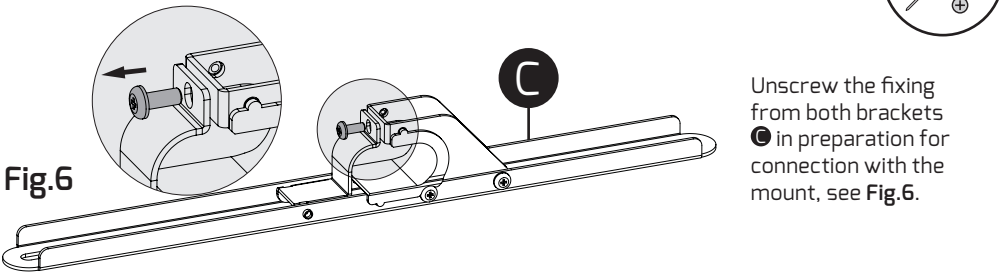
2. Attaching the Mount extension



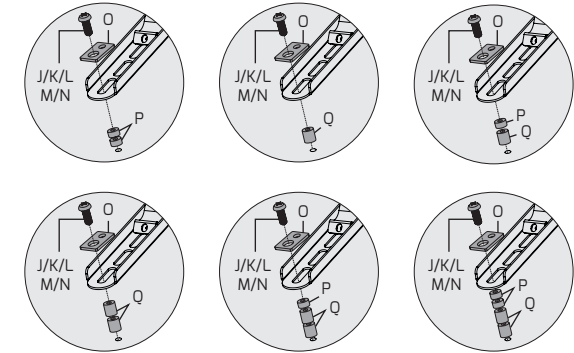
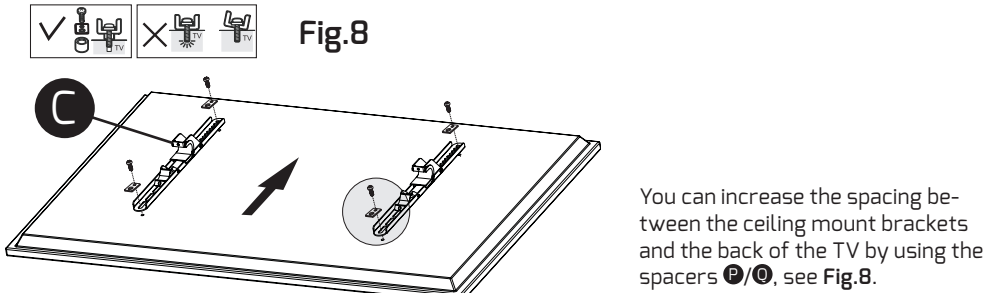
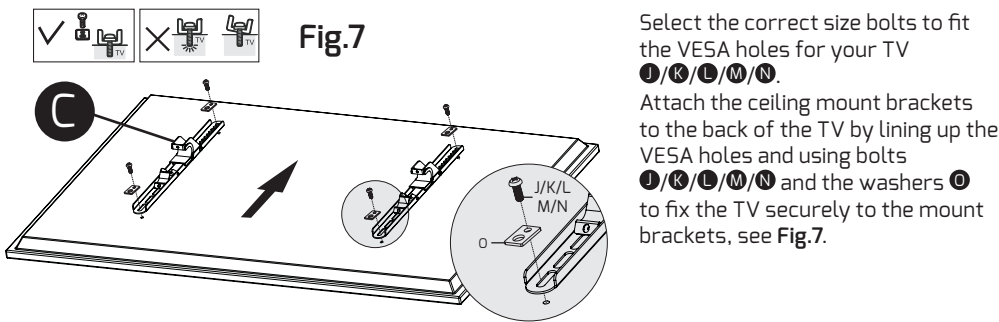
3. Attaching the Horizontal Bracket Arm



4. Preparing the Vertical Brackets



5. Mounting the Vertical Brackets to the TV



6. Attaching the TV to the Mount & Adjusting the Tilt, Swivel & Level

