



# WARNING

# THOR

by Labgear

## USER GUIDE - 28011T

# 32-55"

## Universal Swivel Tabletop TV Stand



- TV Size range: **32-55"**
- Maximum weight capacity: **40kg**
- Mount function: **Swivels +35°/-35°**
- Compatability: **Flat and Curved Displays**
- Compatible with VESA sizes: **200 x 200, 300 x 200, 300 x 300, 400 x 200, 400 x 300, 400 x 400**

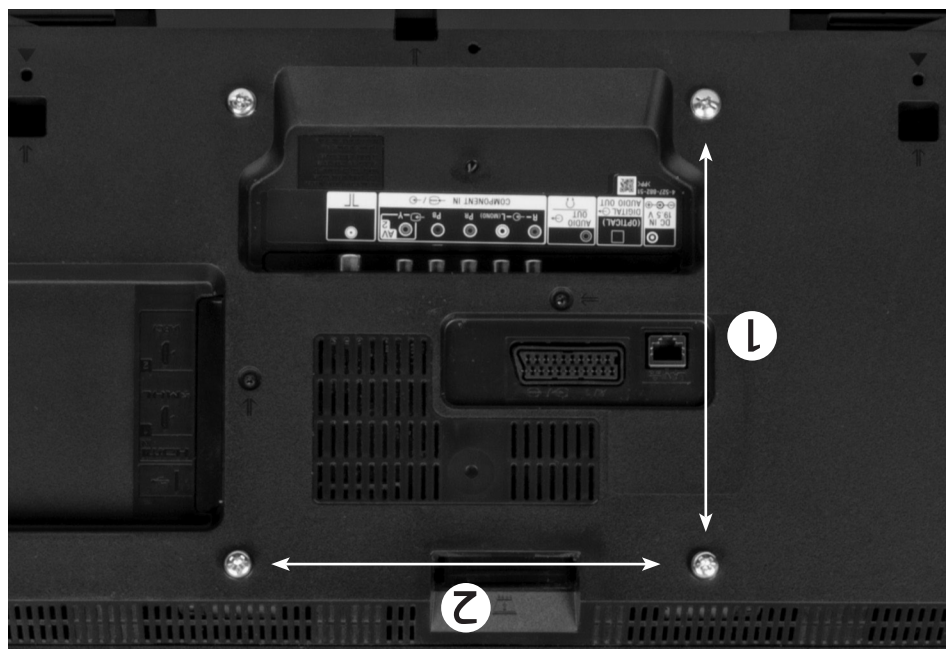
- Check the components list and images to check there are no missing or defective parts.
- Never exceed the Maximum Weight Capacity.
- Always ensure that all 4 bolts engage well into the VESA threaded apertures on the back of your TV; to at least a depth of 70% of the total depth of the aperture to ensure your TV is attached securely to the TV mount.
- Read these instructions carefully before installation. If in any doubt about safely installing this product, contact a professional installer for assistance.
- For larger/heavier TVs we recommend that you ask someone to assist you with lifting and positioning your TV.
- This product is suitable for indoor use only.
- Improper installation or use of this product can result in product failure, damage or personal injury.

- This product contains small items that could cause choking if swallowed, so keep these items away from children and pets.
- Appropriate safety equipment and proper tools must be used for installation. Always check manufacturer's operating and safety instructions before using tools and other equipment.

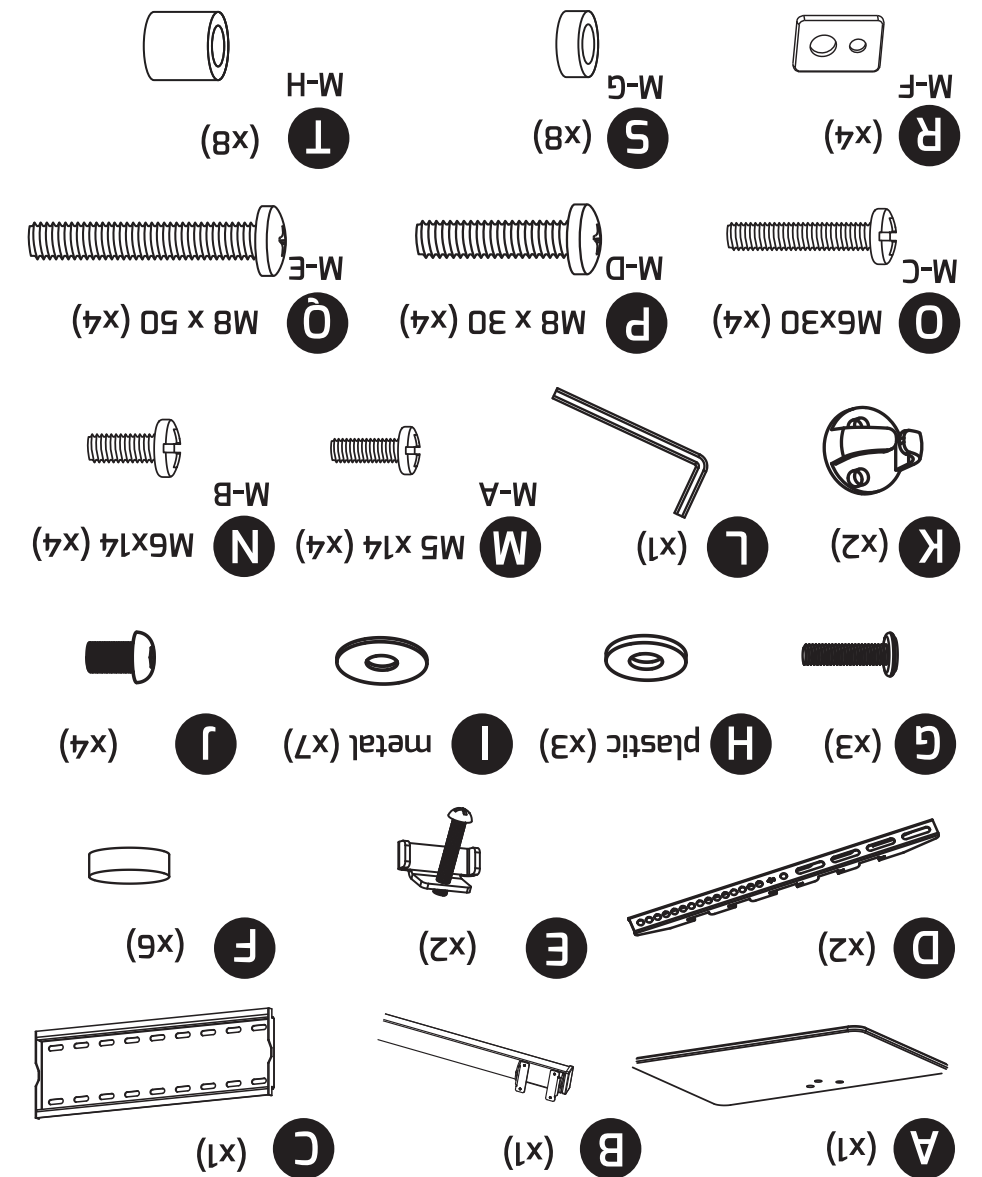
UK Distributor: Philex Electronic Ltd., London Road, Bedford, MK42 0NX, U.K.

EU Distributor: Philex Electronic Ireland Ltd., Robwyn House, Corrintra, Castleblayney, Co. Monaghan, A75 YX76, Ireland.

© Philex Electronic Ltd. 2021. Vb1.1



- VESA is the standard adopted by most TV manufacturers for wall bracket mounting.
- There are 4 holes on the back of every flat screen TV and the space between the holes is governed by the VESA standard.
- VESA comes in a range of sizes depending on the weight and size of the flat screen TV; sizes 50 x 50mm, 75 x 75mm, 100 x 100mm, 200 x 100mm and 200 x 200mm are standard. Not all flat screen TVs are compliant, contact the TV manufacturer for assistance if your TV does not appear to comply with VESA.
- To check if your TV or monitor is compliant, look at the rear of the display there should be 4 screw-holes in a square pattern or in larger displays a rectangular shape.
- Measure the distances marked (Z) (horizontal) x (1) (vertical) below in mm to find your VESA format.

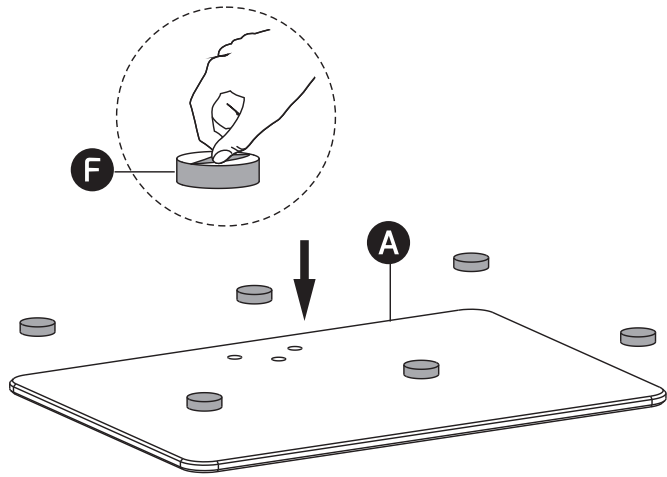


Before installation check that you have all the components shown here and that none of them are damaged.

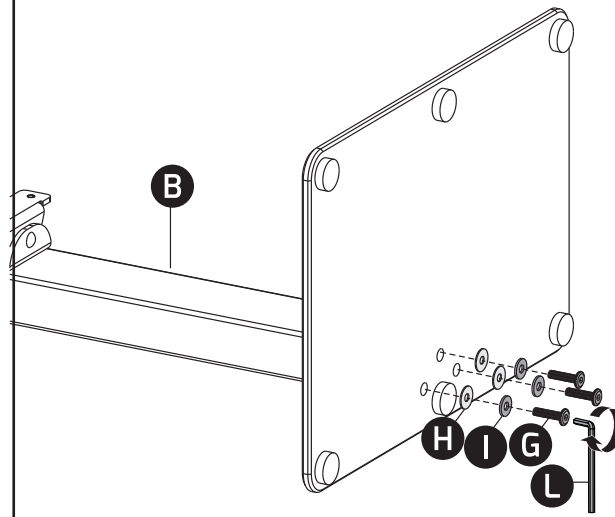
## VESA Compatibility

## Components

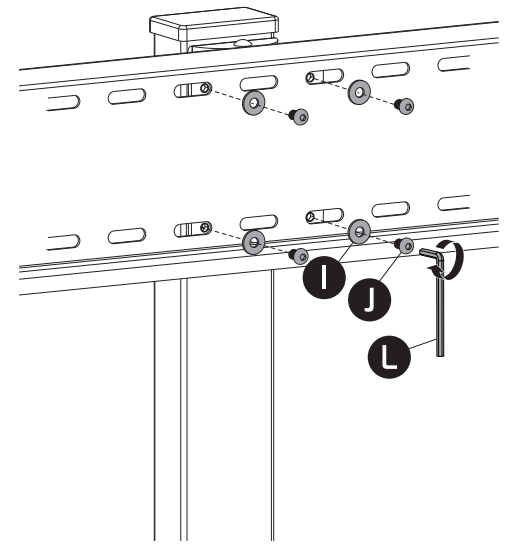
## 1. Preparing Base - attaching foot pads



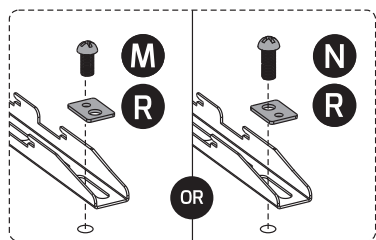
## 2. Attaching Base to Stand



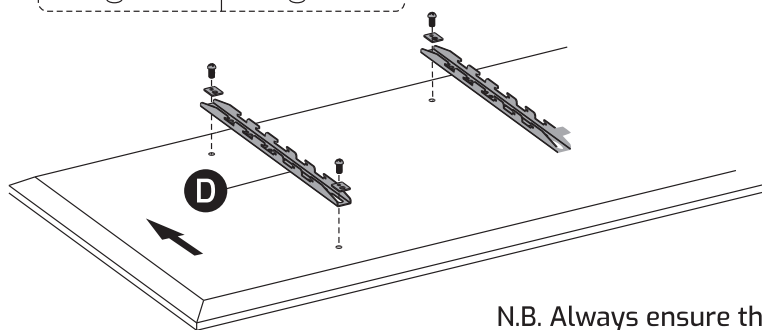
## 3. Attaching Plate to Stand



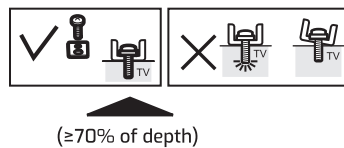
## 4a. Attaching Adaptor Brackets to TV



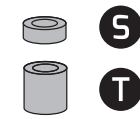
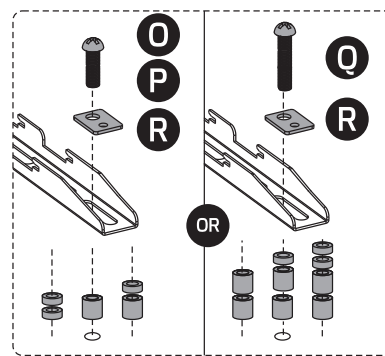
Select the correct size bolts to fit the VESA holes for your TV **M/N/O/P/Q**. Attach the adaptor brackets to the back of the TV by lining up the VESA holes and using bolts **M/N/O/P/Q** and the washers **R** to fix the brackets securely to the TV.



N.B. Always ensure that all 4 bolts engage well into the VESA threaded apertures on the back of your TV

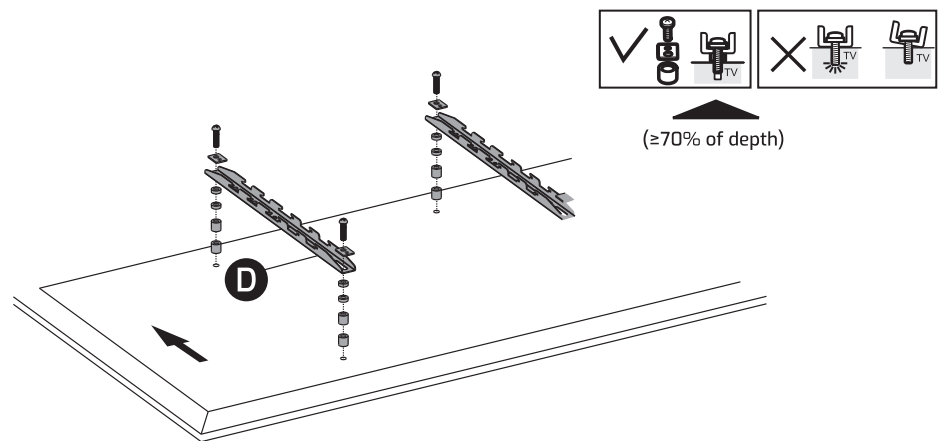


## 4b. Attaching Adaptor Brackets to TV using spacers

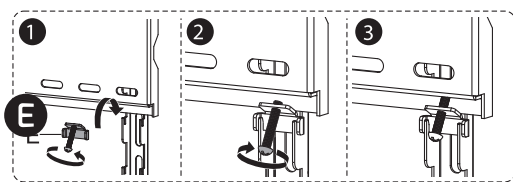
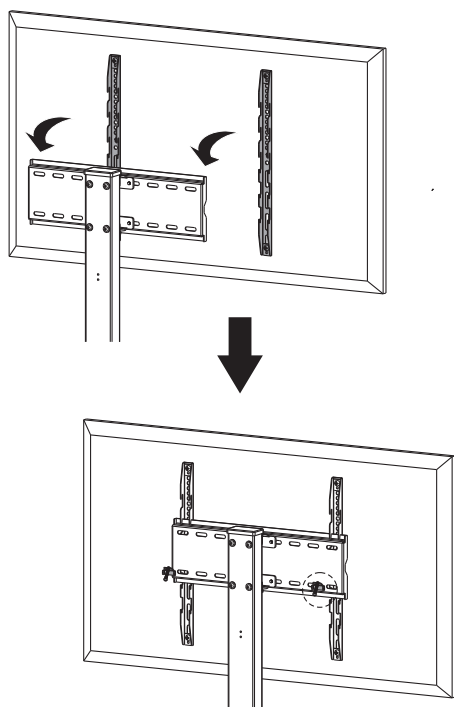


Use the spacers **S/T** if the bolts are too long or the TV has a curved surface to fix the brackets securely to the TV.

N.B. Always ensure that all 4 bolts engage well into the VESA threaded apertures on the back of your TV

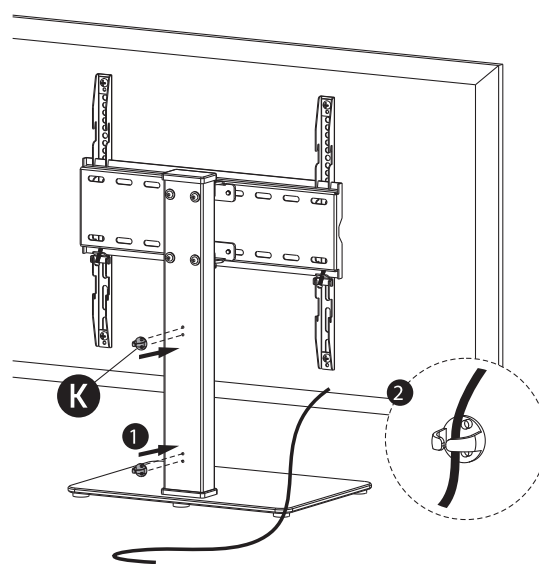


## 5. Mounting TV on Stand

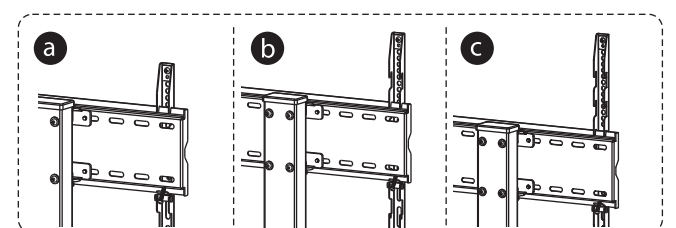
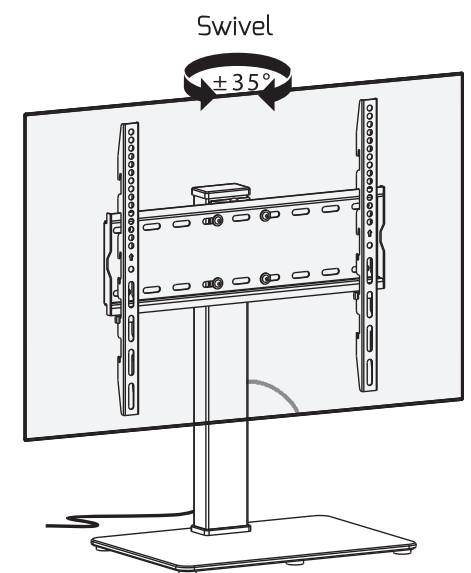


With two people, lift and hook the adaptor brackets onto the top and bottom of the plate. hold the TV in place, insert locking tabs **E** and tighten the bolts with a screwdriver to secure the adaptor bracket arms to the plate.

## 6. Cable Management



## 7. Adjusting Position



To adjust the height of the TV, release the locking tabs **E**, and lift or lower the screen and adaptor brackets and reattach the adaptor brackets at the height required, then replace the locking tabs.



Technical Support:  
www.philex.com/support