



WRT

Original Instructions



Please read these instructions before use. Failure to follow the warnings and instructions may result in electric shock, fire and/or serious injury.

<i>Technical Data</i>	<i>P.10</i>
<i>Safety</i>	<i>P.11</i>
<i>Electrical Safety</i>	<i>P.12</i>
<i>EC Declaration of Conformity</i>	<i>P.13</i>
<i>Items Enclosed</i>	<i>P.14</i>
<i>Description of Parts</i>	<i>P.14</i>

<i>Assembly</i>	<i>P.15</i>
<i>Operation</i>	<i>P.17</i>
<i>Accessories</i>	<i>P.19</i>
<i>Maintenance</i>	<i>P.20</i>
<i>Environmental Protection</i>	<i>P.20</i>
<i>Guarantee</i>	<i>P.20</i>
<i>Spare Parts</i>	<i>P.21</i>

Fig. 1

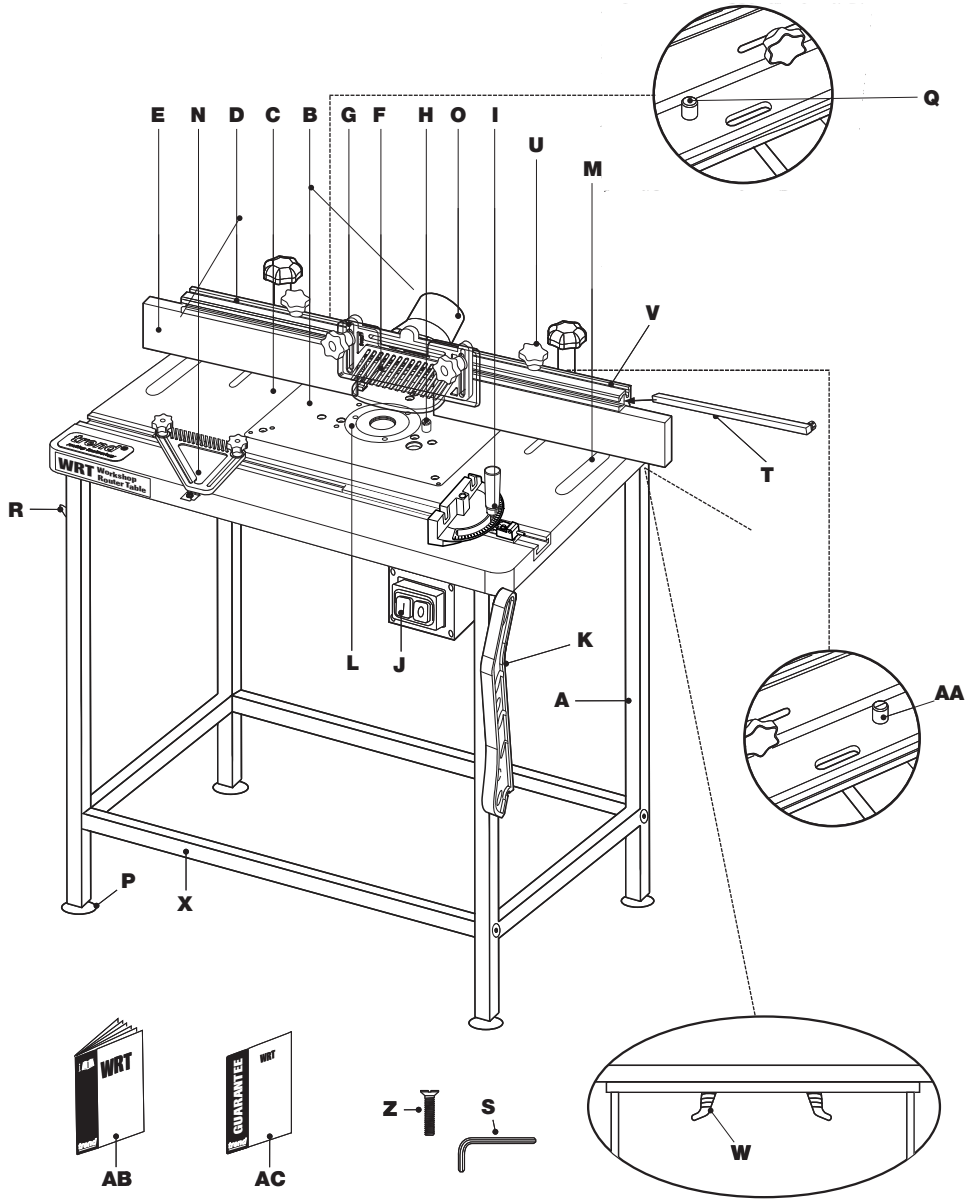


Fig. 2

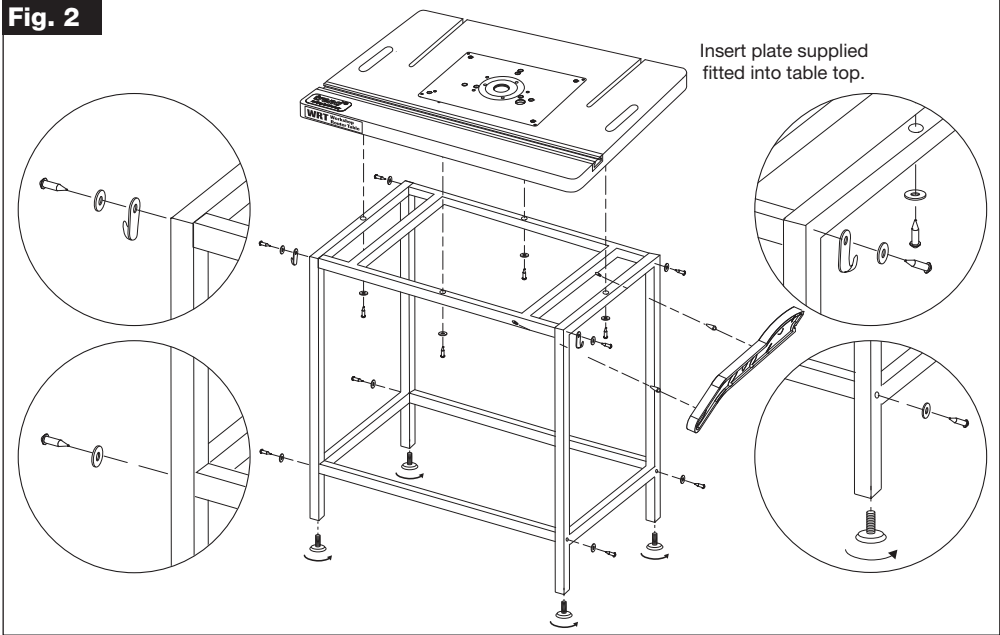


Fig. 3

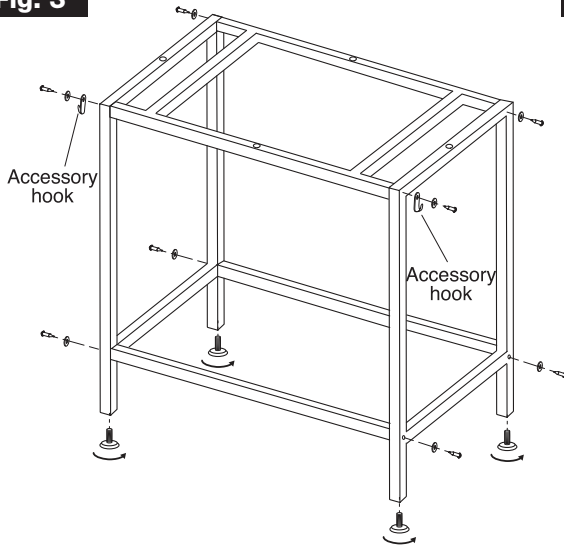
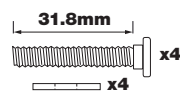
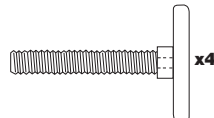
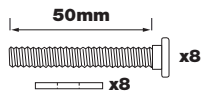
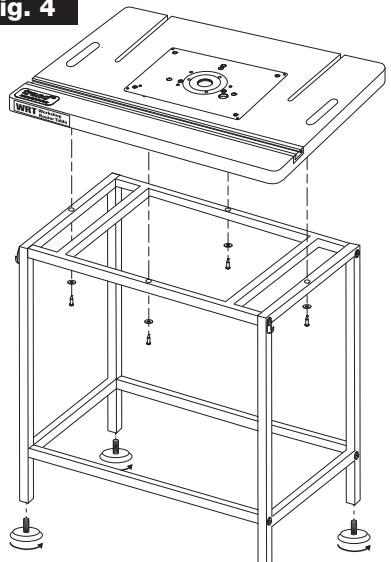


Fig. 4



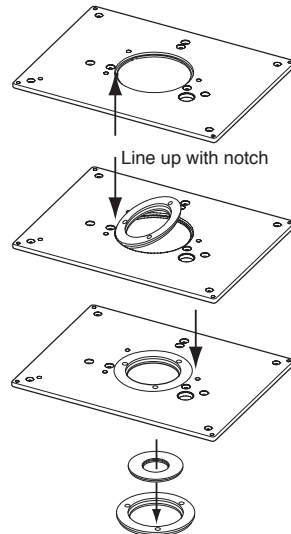
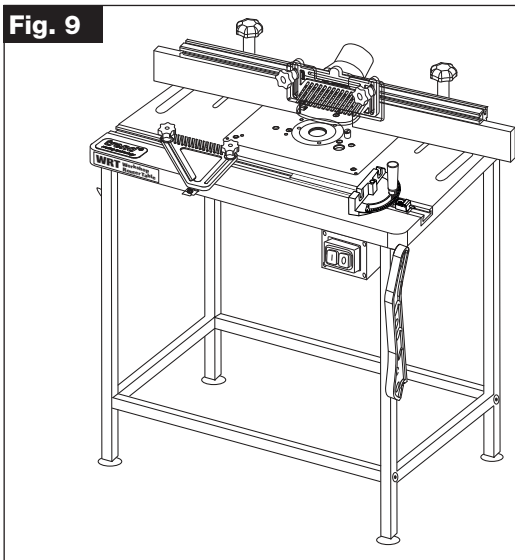
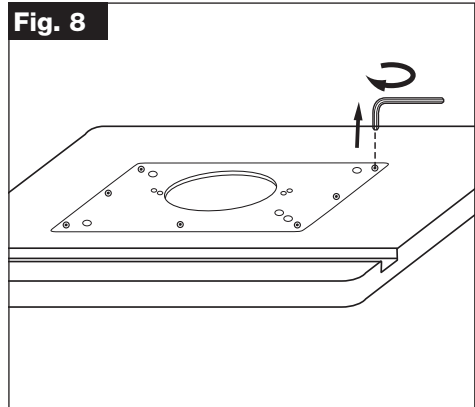
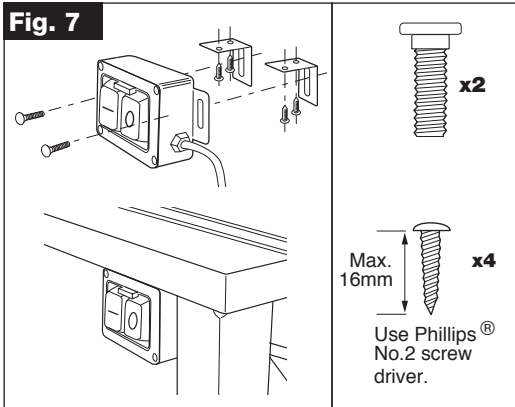
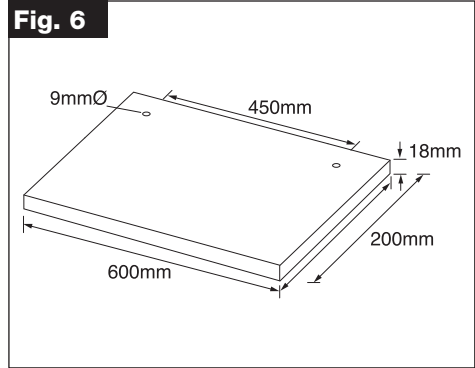
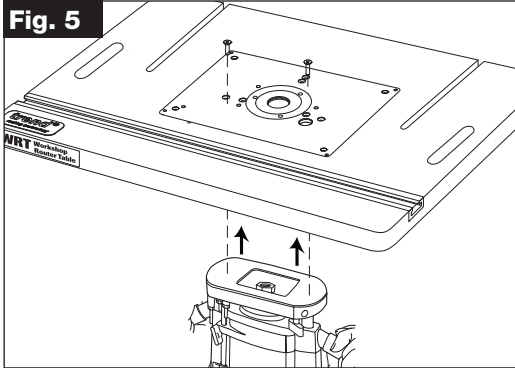


Fig. 9a

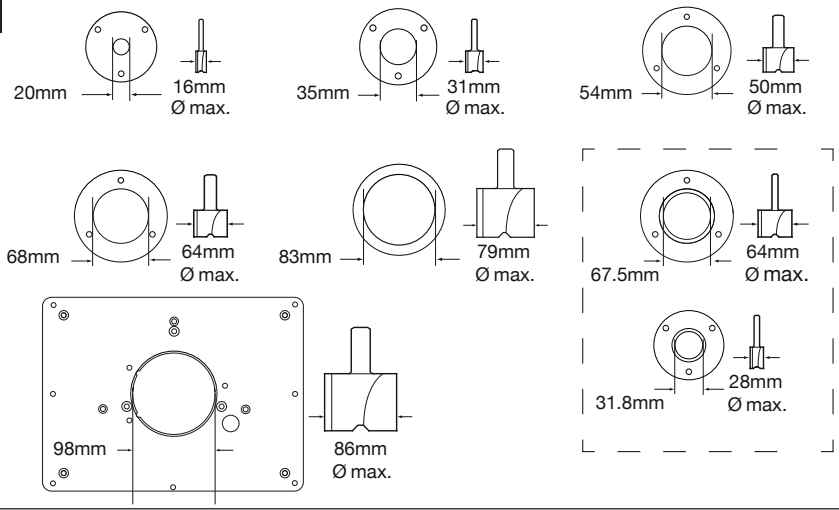


Fig. 10

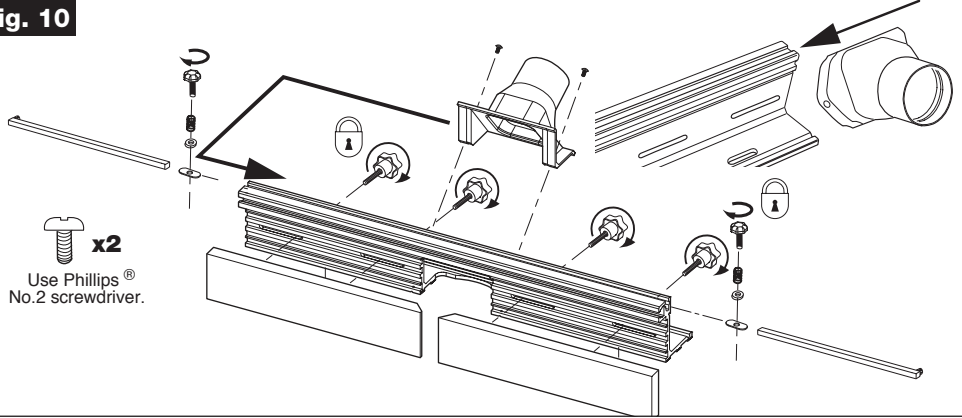


Fig. 11

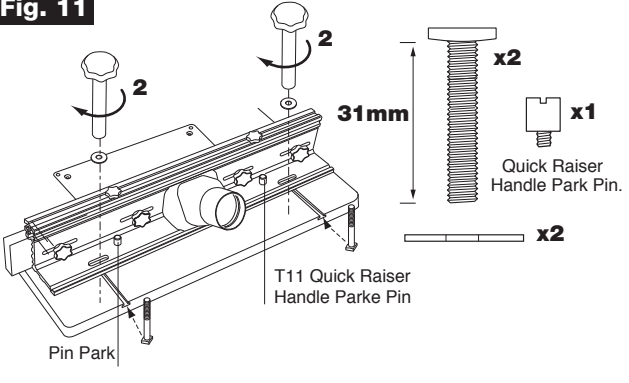


Fig. 12

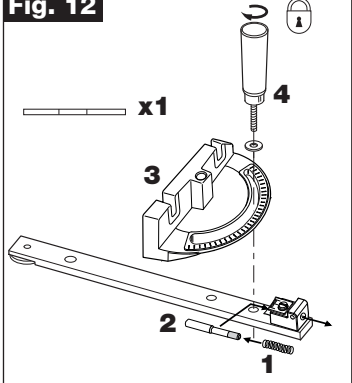


Fig. 13

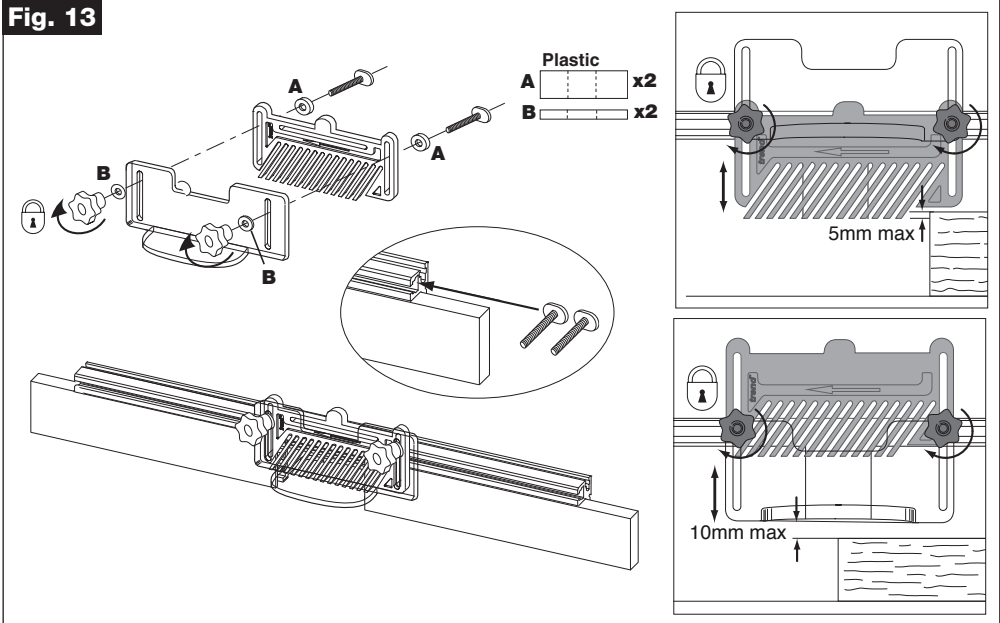


Fig. 14

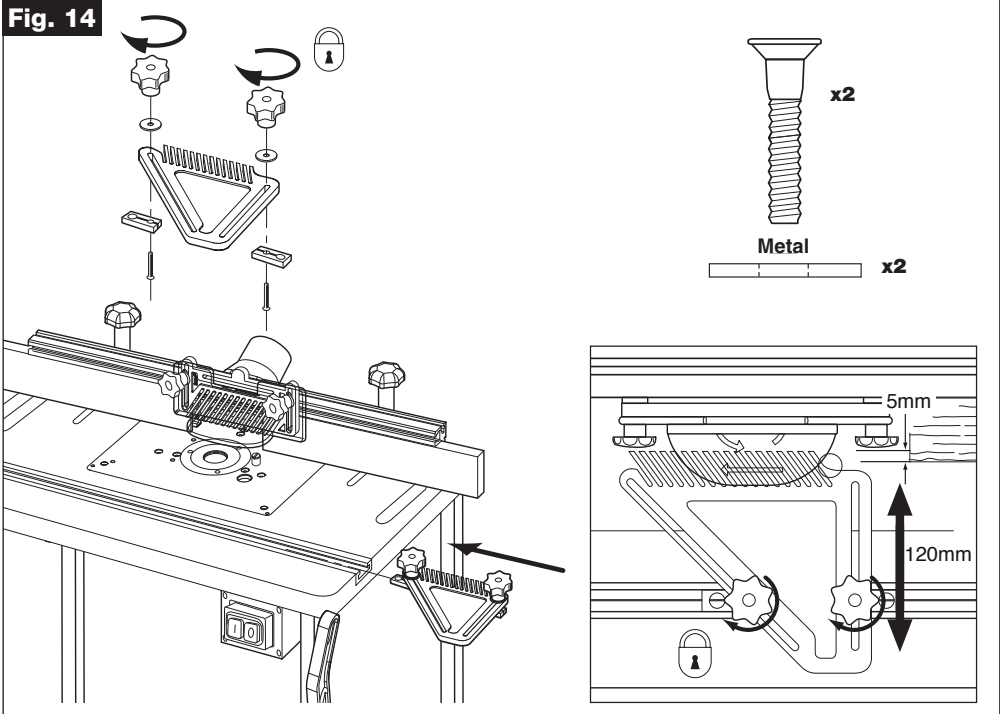


Fig. 15

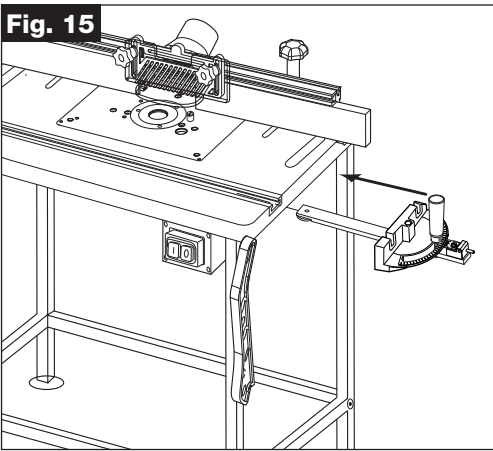


Fig. 16

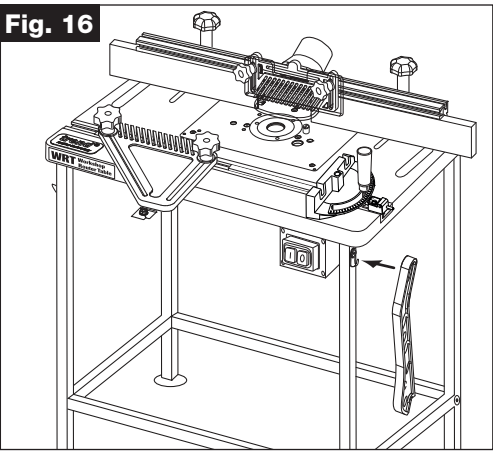


Fig. 17

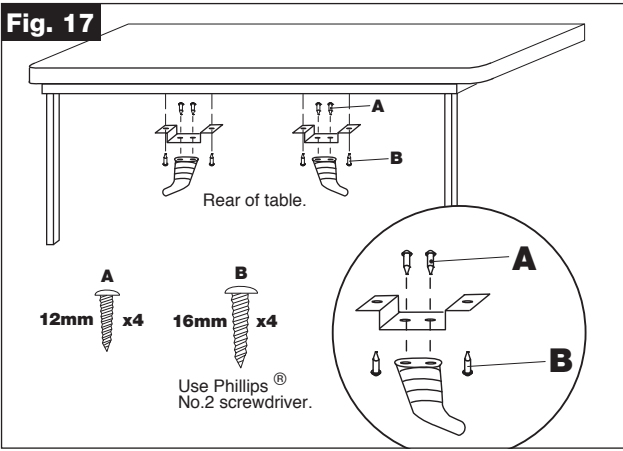


Fig. 18

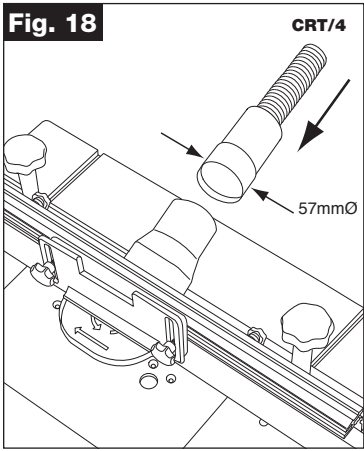


Fig. 19

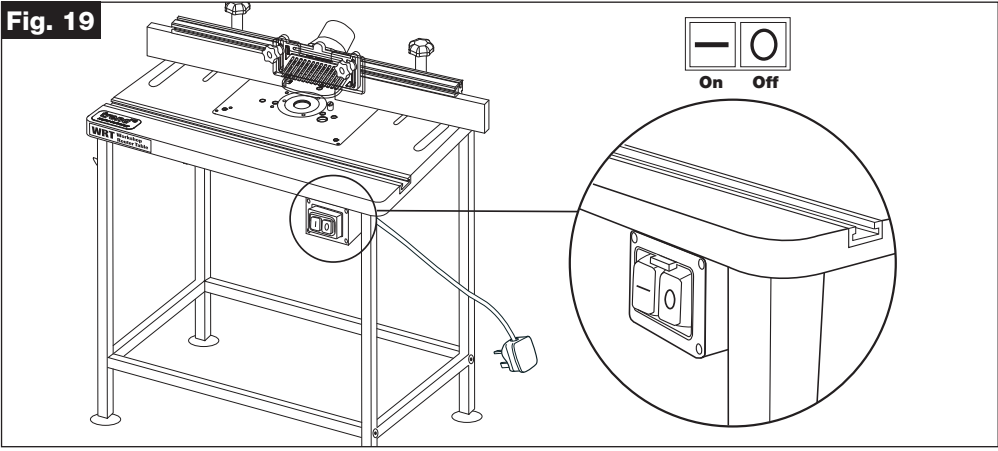


Fig. 20

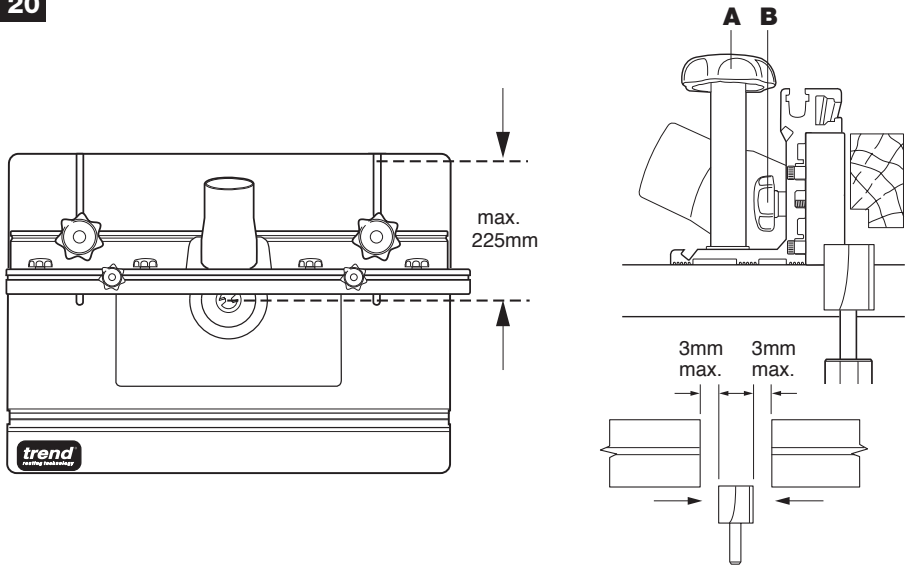


Fig. 21

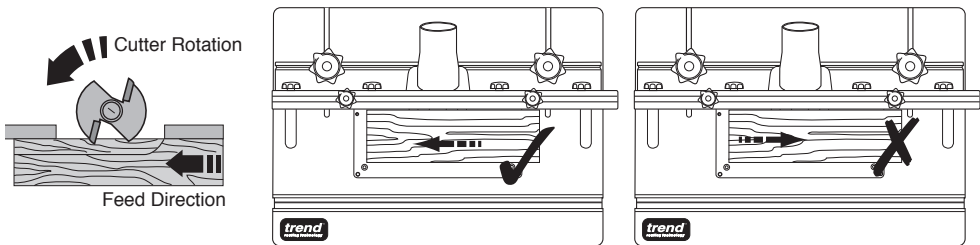


Fig. 22

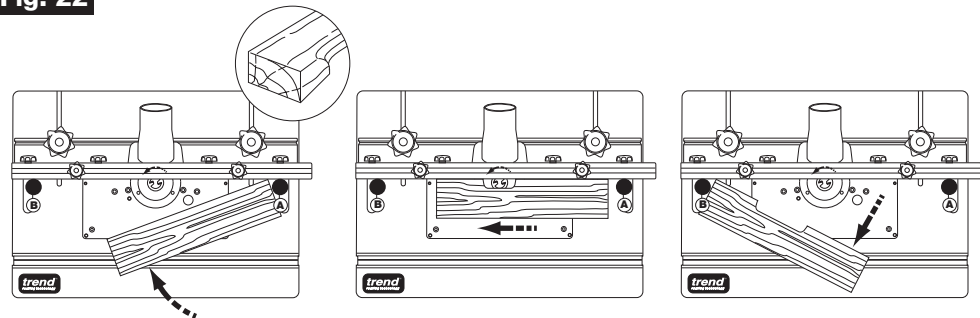


Fig. 23

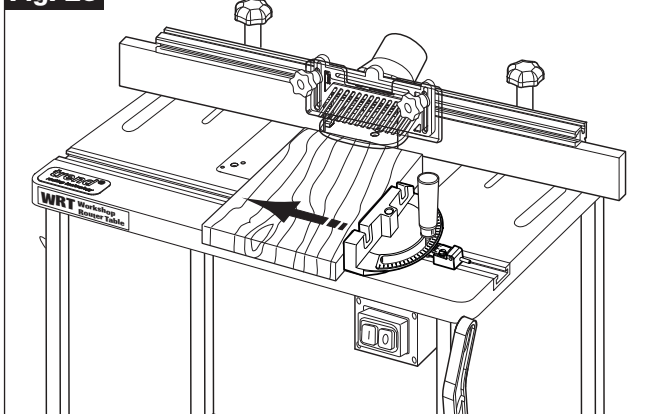


Fig. 24

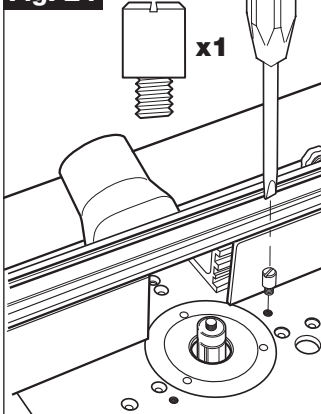


Fig. 24a

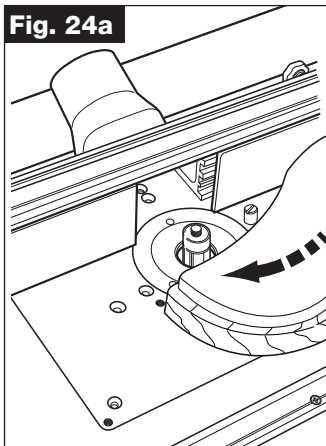


Fig. 24b

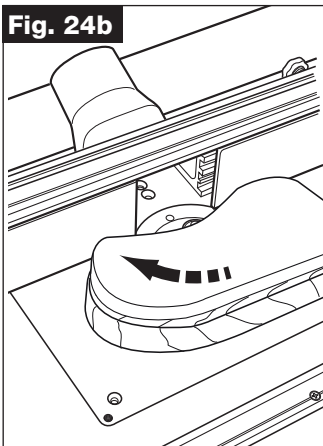


Fig. 24c

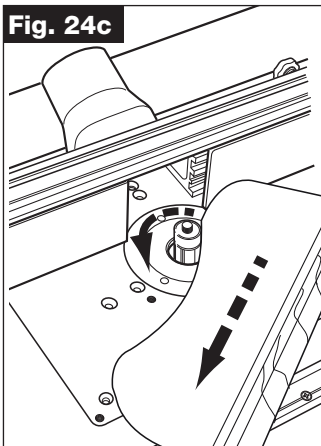
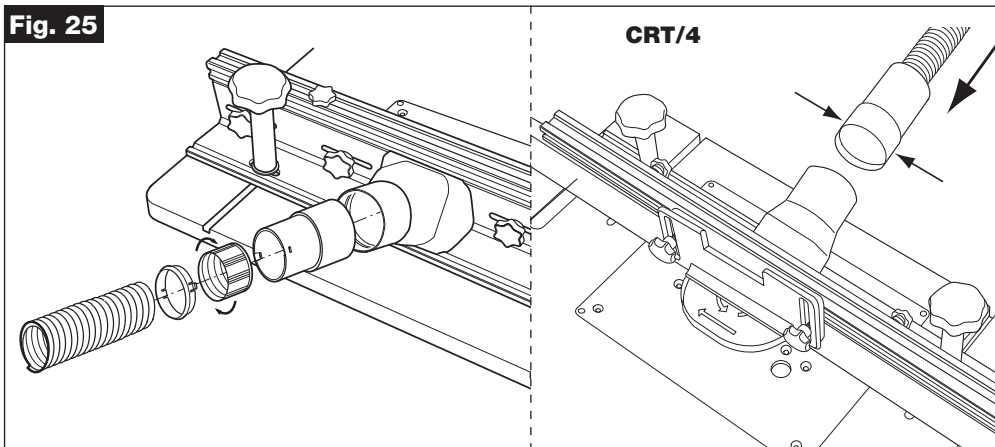


Fig. 25



WRT

Dear Customer

Thank you for purchasing this Trend product, we hope you enjoy many years of creative and productive use.

Please remember to return your guarantee card within 28 days of purchase.

Please read these instructions before use.

Definitions: Safety Guidelines

The definitions below describe the level of severity for each signal word. Please read the manual and pay attention to these symbols.

The following symbols are used throughout this manual:



WARNING: indicates a potential hazardous situation which, if not avoided, **could** result in **death or serious injury**.



CAUTION: Indicates a potentially hazardous situation which, if not avoided, may result in **minor or moderate injury**.

NOTICE: Indicates a practice **not related** to personal injury which, if not avoided, **may** result in **property damage**.



Denotes risk of electric shock.



Denotes risk of fire.

Additional Symbols Used



Wear Personal Protective Equipment (PPE). Ear, eye and respiratory protection **must** be worn.



Denotes risk of personal injury, loss of life or damage to the tool in case of non-observance of the instructions in this manual.



Refer to the instruction manual of your power tool.



If you require further safety advice, technical information or spare parts, please call Trend Technical Support or visit www.trend-uk.com

ROUTER TABLE

TECHNICAL DATA

Voltage	UK & Eire	V _{AC}	240
	Europe	V _{AC}	230
On/off switch			No-volt release
Dimensions	Width x depth	mm	804x604
		mm	840
Table height		mm	86
Cutter diameter max.		mm	55
Cutter height max.		mm	6.35
Loss of cutting depth due to table thickness		mm	60
Workpiece height max.		mm	800
Workpiece length max.*		mm	27.5
Weight		kg	

*Unless a workpiece support is used.

FUSES

UK & Eire	240V tools	13 Amperes	in plug
Europe	230V tools	10 Amperes	in mains

INTENDED USE

The unit is intended for stationary operation of portable routers for the cutting of wood or wood based material when suitable cutter is fitted. It is not intended for continuous production or production line use. This unit must not be put into service until it has been established that the power tool to be connected to this unit is compliance with 2006/42/EC (identified by the CE marking on the power tool) or UK Statutory Instruments 2008 No. 1597 - The Supply of Machinery (Safety) Regulation (identified by UKCA marking on the power tool).

This router table is a professional product.

DO NOT use under wet conditions or in presence of flammable liquids or gases.

DO NOT let children come into contact with this appliance. Supervision is required when inexperienced operators use this appliance.

This product is not intended for use by persons (including children) suffering from diminished physical, sensory or mental abilities ; lack of experience, knowledge or skills unless they are supervised by a person responsible for their safety. Children should never be left alone with this product.



EN 60745-1:2009 + A11:2010 Annex M & EN 60745-2-17:2010 Annex M

Safety of working stands for operation with hand-held motor-operated electric tools.

Annex M applies to working stands (router table) with or without mains supply, and intended to be used in combination with hand-held electric tools but not intended for continuous production or production line use.

GENERAL WORKING STAND (ROUTER TABLE) SAFETY RULES



WARNING! Read all instructions. Failure to follow all instructions listed below may result in electric shock, fire and/or serious injury. The term "router" in all of the warnings listed below refers to your mains operated (corded) router power tool or battery operated (cordless) router power tool.

Observe the safety regulations in the instruction manual of the router power tool to be used.

SAVE THESE INSTRUCTIONS

1. General router table safety (Annex M)

- a) Disconnect the plug from the power source before making any adjustments or changing accessories. Accidental starting of the router is a cause of some accidents.
- b) Properly assemble the router table before mounting the router. Proper assembly is important to prevent risk of collapse.
- c) Securely fasten the router to the router table before use. Router shifting on the router table can cause loss of control.
- d) Place the router table on a solid, flat and level surface. When the router table can shift or rock, the router or workpiece cannot be steadily or safely controlled.
- e) Do not overload the router table or use as a ladder or scaffolding. Overloading or standing on the router table causes the table to be top heavy and likely to tip over.
- f) The router table is for use with the routers listed in the manual only. The router table must not be used with any other power tool. Fitting of a tool not intended for a router table can cause an injury.
- g) Insert rings. Use the correct table rings in relation to the size of the cutter tool.
- h) Always wear suitable personal protective equipment. This includes hearing protection to reduce the risk of

induced hearing loss; respiratory protection to reduce the risk of inhalation of harmful dust; gloves to avoid possible injuries when handling cutter block and rough material due to sharp edges; safety glasses to avoid eye injury caused by flying particles;

- i) Possible contact of the cutter block with hand and fingers of the operator. Ensure correct guard is fitted and adjusted to prevent accessibility to portions of the cutter tool not being used;
- j) Possible kickback, an unexpected rapid reaction to uncontrolled guiding of small work pieces opposite to the direction of feed cutting. Use horizontal pressure devices when working narrow workpieces to ensure safe working;
- k) Hazardous situation due to uncontrolled lift up of the workpiece.
- l) When performing curved work, the necessity to guide the workpiece in the correct way to prevent cutting injuries. Use lead on pin, top pressure and guard system to ensure safe operation.
- m) Incorrect use of cutter tools, workpiece and guiding devices may lead to dangerous situation. Ensure operator handles the workpiece correctly. Operator must use, adjust and operate workpiece clamps and guiding devices properly. Operator must ensure correct tool selection.
- n) Unmaintained tools can cause uncontrolled situations. Use cutting tools which are sharpened, maintained and adjusted in accordance with the tool manufacturers instructions;
- o) Possible contact with moving parts. Switch off the machine and pull the plug when changing or adjusting.
- p) Keep hands away during straight work it. Use where possible pressure device in conjunction with the fence.
- q) Missing stops can cause kickback. Use back and/or front stops fixed to the fence when doing stopped work.
- r) Router mounting. Mount and secure the hand-held router to the router table properly.
- s) Possible mistake of tool position: Fit the cutter tooling to the machine correctly and feed the workpiece against the direction of spindle rotation.
- t) Cutter speed. Select the correct speed corresponding to the tooling and material being used.
- u) Incorrect adjustment of fences. Fences shall be adjusted in relation to the different work. A false fence can be made and secured to the fence cheeks, an is used to minimise the gap between cutting tool and fence plate.
- v) Workpiece size. See technical data section of table manual for workpiece dimensions the working stand is intended for. For longer lengths a workpiece support is required.
- w) Maximum tool cutter diameter. See technical data section of router table manual for the maximum cutter tool diameter the working stand is recommended for.
- x) When machining wood. Use the correct size dust collecting spout and hose to suit back fence dust spout aperture.

2. Work area

- a) Keep work area clean and well lit. Cluttered and dark areas invite accidents.
- b) Do not operate router and router table in explosive atmospheres, such as in the presence of flammable liquids, gases or dust. Routers and router table switches create sparks which may ignite the dust or fumes.
- c) Keep children and bystanders away while operating a power tool. Distractions can cause you to lose control.

3. Electrical safety

- a) Router and router table switch plugs must match the outlet. Never modify the plug in any way. Do not use adapter plugs with earthed (grounded) power tools. Unmodified plugs and matching outlets will reduce risk of electric shock.
- b) Avoid body contact with earthed or grounded surfaces such as pipes, radiators, ranges and refrigerators. There is an increased risk of electric shock if your body is earthed or grounded.
- c) Do not expose router and router table to rain or wet conditions. Water entering a router or router table switch will increase the risk of electric shock.
- d) Do not abuse the cord. Never use the cord for carrying, pulling or unplugging the router and router table switch. Keep cord away from heat, oil, sharp edges or moving parts. Damaged or entangled cords increase the risk of electric shock.
- e) When operating a router and router table outdoors, use an extension cord suitable for outdoor use. Use of a cord suitable for outdoor use reduces the risk of electric shock.

4. Personal safety

- a) Stay alert, watch what you are doing and use common sense when operating a router and router table. Do not use while you are tired or under the influence of drugs, alcohol or medication. A moment of inattention while operating a router and router table may result in serious personal injury.
- b) Use safety equipment. Always wear eye protection. Safety equipment such as dust mask, non-skid safety shoes, hard hat, or hearing protection used for appropriate conditions will reduce personal injuries.
- c) Avoid accidental starting. Ensure the switch is in the off position before plugging in. Carrying routers with your finger on the switch or plugging in routers that have the switch on invite accidents.
- d) Remove any adjusting key or wrench before turning the router and router table on. A wrench or a key left attached to a rotating part of the router may result in personal injury.
- e) Do not overreach. Keep proper footing and balance at all times. This enables better control of the workpiece in unexpected situations.
- f) Dress properly. Do not wear loose clothing or jewellery. Keep your hair, clothing and gloves away from moving parts. Loose clothes, jewellery or long hair can be caught in moving parts.
- g) Connect router table to dust extraction devices. Use

of these devices can reduce dust related hazards.

5. Router and router table use and care

- a) Do not force the router. Use the correct router cutter for your application. The router will do the job better and safer for which it was designed.
- b) Do not use the router or router table of the switch does not turn it on and off. Any router that cannot be controlled with the switch is dangerous and must be repaired.
- c) Disconnect the plug from the power source before making any adjustments, changing accessories, or sorting router and router table. Such preventative safety measures reduce the risk if starting the power tool accidentally.
- d) Store idle routers and router tables out of the reach of children and do not allow persons unfamiliar with the router or router table or these instructions to operate the tool. Routers and router tables are dangerous in the hands of untrained users.
- e) Maintain router and router table. Check for misalignment or binding of moving parts, breakage of parts and any other condition that may affect the tools operation. If damaged, have the router or router table repaired before use. Many accidents are caused by poorly maintained power tools.
- f) Keep cutting tools sharp and clean. Properly maintained cutting tools with sharp cutting edges are less likely to bind and are easier to control.
- g) Use the router, router table, accessories and tool bits etc., in accordance with these instructions and in the manner intended for the particular type of router, taking in account the working conditions and the work to be performed. Use of the router or router table for operations different from intended could result in a hazardous situation.



ELECTRICAL SAFETY

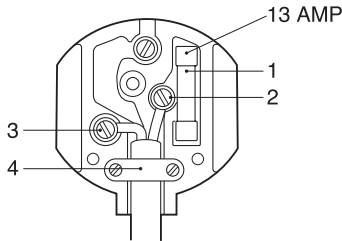
Mains Plug Replacement

(UK & Ireland only)

Always check the condition of the cable and plug before starting with your work. Should your mains plug need replacing and you are competent to do this, proceed as instructed below. If you are in doubt, contact an authorised Trend repair agent or a qualified electrician.

- Disconnect the plug from the supply.
- Cut off the plug and dispose of it safely; a plug with bared copper conductors is dangerous if engaged in a live socket outlet.
- Only fit 13 Amperes BS 1363A approved plugs fitted with a 13 Amp A.S.T.A approved BS 1362 fuse (1).
- The cable wire colours, or a letter, will be marked at the connection points of most good quality plugs. Attach the wires to their respective points in the plug (see below). Brown is for Live (L) (2) and Blue is for Neutral (N) (3).

- Before replacing the top cover of the mains plug ensure that the cable restraint (4) is holding the outer sheath of the cable firmly and that the two leads are correctly fixed at the terminal screws.



WARNING: Never use a light socket.



WARNING: Never connect the live (L) or neutral (N) wires to the earth pin marked E or \perp .

Using an Extension Cable

- If an extension cable is required, use an approved triple core extension cable suitable for the power input of this tool (see technical data). The minimum conductor size is 1.5mm².
- When using a cable reel, always unwind the cable completely.
- Also refer to the table below.

Conductor size (mm ²)		Cable rating (Amperes)					
0.75		6					
1.00		10					
1.50		15					
2.50		20					
4.00		25					
Cable length (m)							
		7.5	15	25	30	45	60
Voltage	Amperes	Cable rating (Amperes)					
230	0 - 2.0	6	6	6	6	6	6
	2.1 - 3.4	6	6	6	6	6	6
	3.5 - 5.0	6	6	6	6	10	15
	5.1 - 7.0	10	10	10	10	15	15
	7.1 - 12.0	15	15	15	15	20	20
	12.1 - 20.0	20	20	20	20	25	-

EC DECLARATION OF CONFORMITY MACHINERY DIRECTIVE



ROUTER TABLE WRT

Trend declares that the attachment described under Technical Data is in compliance with 2006/42/EC, and has been designed in accordance with EN12100:2010, EN62841-1:2015, EN60745-2-17:2010 Annex M.

The tool also complies with Directives 2014/30/ EU and 2011/65/EU.

Pushstick is made in compliance with Harmonized Standard EN 1870-19:2013.

For more information please contact Trend at the following address or refer to back of manual. The undersigned make this declaration on behalf of Trend Machinery & Cutting Tools Ltd.

Technical Director
Neil McMillan

Manufacturer
Trend Machinery &
Cutting Tools Ltd
Unit 6 Odhams Trading Estate
St Albans Road, Watford
Herts, WD24 7TR
England
01/01/2018

Technical File Contact
Trend Tool Technology Ltd
3rd Floor, Kilmore House,
Park Lane, Spencer Dock,
Dublin 1, Ireland

UK UK DECLARATION OF CA CONFORMITY

The undersigned, representing the following manufacturer

Manufacturer:
Trend Machinery & Cutting Tools Ltd Watford, England
WD24 7TR declares that the product(s):

Product Identification:

Product: Router Table
Brand: Trend
Model: WRT

Conforms to the following UK Regulations

- The Supply of Machinery (Safety) Regulations, 2008, S.I. 2008/1597 (as amended).
- Electromagnetic Compatibility Regulations, 2016, S.I. 2016/1901 (as amended).
- The Restriction of the Use of Certain Hazardous Substances in Electrical and Electronic Equipment Regulations 2012, S.I. 2012/3032 (as amended).

and the following Designated Standards:

S.I. 2008/1597: EN 12100:2010
EN 62841-1:2015
EN 60745-2-17:2010 Annex M

Pushstick is made in compliance with

S.I. 2008/1597: EN 1870-19:2013

The undersigned is responsible for compilation of the technical file and makes this declaration on behalf of Trend Machinery & Cutting Tools Ltd.



Neil McMillan
Technical Director

Trend Machinery
& Cutting Tools Ltd
Odhams Trading Estate,
Watford, WD24 7TR,
England
01/06/2021

RESIDUAL RISKS

In spite of the application of the relevant safety regulations and implementation of safety devices, certain residual risks cannot be avoided.

These are:-

- Impairment of hearing.
- Risk of personal injury due to flying particles.
- Risk of burns due to accessories becoming hot during operation.
- Risk of personal injury due to prolonged use.

MARKINGS ON TABLE

The following pictures are shown on the tool.



Read instruction manual before use.

Date Code Position

The year of manufacture is on a label next to the rating plate.

ITEMS ENCLOSED

- 1 x Table top
- 4 x Legs
- 4 x Leg rails
- 4 x Feet
- 1 x Back fence and scale
- 2 x Fence cheeks
- 4 x Fence cheek knobs
- 1 x Top guard, top pressure and fixing knob assembly
- 1 x Dust spout and fixing screws
- 2 x Back fence fixing knobs and bolts
- 1 x Side pressure and fixing knob assembly
- 2 x Edge planing rods
- 2 x Edge planing rod locking knob assemblies

- 8 x Leg rail fixing screws and washers
- 4 x Frame to top fixing screws and washers
- 1 x Insert plate and fixing screws
- 1 x No-volt release switch brackets and fixing screws
- 1 x Mitre fence assembly
- 2 x Insert rings
- 1 x Lead-on pin
- 1 x Pushstick
- 2 x Table top scales (fitted)
- 1 x T11 Quick Raiser handle park pin
- 2 x Cable management clips and screws
- 1 x Accessory hooks
- 1 x Hex key 3mm A/F
- 1 x Hex key 4mm A/F
- 1 x Router screw fixing pack
- 1 x Instructions
- 1 x Guarantee card

- Check for damage to the tool, parts or accessories which may have occurred during transport.
- Take the time to thoroughly read and understand this manual prior to operation.

DESCRIPTION OF PARTS - (Fig. 1)

- A.** Legs
- B.** Insert plate
- C.** Table top
- D.** Back fence
- E.** Fence cheek
- F.** Top pressure
- G.** Top guard
- H.** Lead-on pin
- I.** Mitre fence
- J.** Switch
- K.** Pushstick
- L.** Insert rings
- M.** Table top scales
- N.** Side pressure
- O.** Dust spout
- P.** Feet
- Q.** Lead-on pin park
- R.** Accessory hook
- S.** Hex key 3mm AF
- T.** Edge planing rod
- U.** Edge planing rod locking assembly
- V.** Backfence scale
- W.** Cable management clips
- X.** Leg rails long
- Y.** Leg rails short
- Z.** Router fixing
- AA.** Screw pack
- T11.** Quick Raiser handle park
- AB.** Manual
- AC.** Guarantee card

ITEMS REQUIRED

- Phillips® No.2. screwdriver.
- Router.
- Hand tools.
- User made bench.
- Slotted screwdriver for lead on pin.

ASSEMBLY

Assembly of Table and Leg Frame - (Fig. 2)

(overview)

- Insert plate supplied fitted into table top.



WARNING: Prior to assembly and adjustments always unplug the router table.

Leg Frame Assembly - (Fig. 3)

(underside view)

Bench Top Assembly - (Fig. 4)

Router Compatibility

The insert plate is drilled to suit routers with TBC hole configuration. The following routers use the screws (B) supplied.



Make	Router Model	Screw x Qty
TREND	T3, T4, T5	B X 2
TREND	T9, T10, T11*	B X 3
CMT	CMT1E	B X 3
DEWALT	DW613, 614, 615	B X 2
DEWALT	DW624, 625E	B X 3
ELU	MOF96(E) MK2	B X 2
ELU	MOF131, 177 (E) MK2	B X 3
PERLES	OF808(E) > 1999	B X 2



NOTICE: Do not mount any power tools not specified on this list.

For users who choose to fit other makes and models of router, the router base plate and/or insert plate will need to be re-drilled by the user.

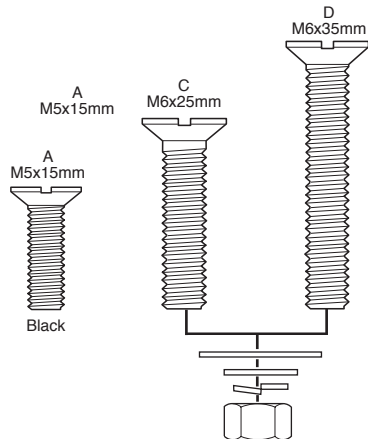
Where possible it is advisable to use the existing countersunk holes for M6 machine screws in the insert plate and drill corresponding holes in the router base plate. The router is then fitted using the M6 machine screws, washers and nuts (C or D).

For some machines M5 screws machine screws (A) can be used to fit into the M5 holes in the router base.



NOTICE: The M6x15mm screws are packed in the back fence fixings bag.

The fixing pack supplied with the table includes the following machine screws.



Countersink Hole Size

Screw size	Countersink diameter	Hole diameter
M6	13mm	6mm
M5	10mm	5mm

Mounting Router to Insert Plate - (Fig. 5)

Invert and stand your router onto a suitable surface. Remove insert plate from table and place it facing upwards onto the base of your router. Screws are supplied for TBC routers, see chart on previous page. Use Phillips® No.2 screwdriver.

Re-drilling Router Base Only

- Invert and stand your router onto a suitable surface.
- Remove insert plate from table and place it facing upwards onto the base of your router.
- Adjust position of the insert plate to centralise.
- Ensure that the holes you are about to drill in the base (using the TBC holes in the insert plate) do not interfere with any of the features on the router or any webbings in the casting of the router base. A slight turning of the router may be required to miss such obstructions.
- Mark the centre of the holes onto the base.
- Remove insert plate and mark the centre of the holes with a centre punch.
- Drill a hole at these points with a 6mm diameter drill bit.
- Clean up edges of holes if required.

Re-drilling Insert Plate Only

- Remove insert plate from table.
- Remove the plastic base of the router. Alternatively a photocopy or an outline of the base can be made of the plastic base instead.
- Align the centre of the insert plate to the router base and secure them together.
- Using a centre punch, mark the centres of holes.
- Drill the required hole size with a suitable metal cutting drill bit. Best results will be obtained if your power drill is mounted in a drill stand.
- Countersink the hole with a countersink bit to a depth so the heads of the screws are slightly below the top surface. Clean off any burrs created.

Re-drilling both Insert Plate and Router Base

- Invert the router and lay the insert plate onto the upturned base.
- Clamp the insert plate and router base together with two cramps.
- Ensuring that the drill bit will not foul any webbing or fixtures on the router base, drill with a 6mm diameter metal cutting drill bit into the insert plate and through the router base two holes.

- Unclamp the router base and insert plate.
- Countersink the insert plate holes with a countersink bit to a depth so the screw heads are slightly below the top surface. Clean off any burrs created on both the insert plate and router base.

User Made Accessory Workboard Mounting - (Fig. 6)

The table has two holes in the mitre fence extension to accept fixings for a user made accessory workboard. The workboard can then be used to mount other routing jigs, so using the WRT as a workbench. Boards can be secured using M8 bolts and M8 nuts (not included).

Mounting No Volt Release Switch - (Fig. 7)

The switch can be positioned at the front of the table or on the right hand side.

Fit brackets to underside of table top first using the self tapping screws and a Phillips® No.2 screwdriver. Then mount switch to brackets, fit the left hand bolt assembly first.

 **CAUTION:** Ensure workbench is stable and secure.

Levelling the Insert Plate - (Fig. 8)

The insert plate can be levelled to the table top by adjusting the seven set screws with the hex key.

- To adjust, first loosen the four insert plate fixing screws.
- Rotate the seven set screws until insert plate is level to table top.
- Once set, tighten the insert plate fixing screws.
- Check plate for level and adjust as necessary.

Fitting Insert Rings - (Fig. 9 - 9a)

 **WARNING:** Always ensure insert rings are a tight fit in the insert plate. Replace damaged or loose rings immediately.

Back Fence Assembly - (Fig. 10)

- Scale is self adhesive backed and can be placed onto the top of the fence. Ensure '0' is centred. Scale can be trimmed to the length of the back fence.
- Slide dust spout into extrusion from one end before fitting fence cheeks knobs.
- Use Phillips® No.2 screwdriver.

Fitting Back Fence - (Fig. 11)

Assembling Mitre Fence - (Fig. 12)

Preset mitre fence angles can be zeroed by loosening the lock nuts on the underside of the protractor using an 8mm A/F spanner, and adjusting the screws using a Phillips® No.2. screwdriver.

Once set tighten the nuts with an 8mm A/F spanner.

Fitting Top Guard & Top Pressure - (Fig. 13)



NOTICE: For some applications the thick and thin washer can be swapped over. For example, when profile scribing using a pushblock.

Fitting Side Pressure - (Fig. 14)

Fitting Mitre Fence - (Fig. 15)

Pushstick Park - (Fig. 16)

There is a second hook to the left hand side for storing other accessories.

Fitting Cable Management Clips - (Fig. 17)

Fitting Dust Extraction Hose Accessory Ref. CRT/4 - (Fig. 18)

(not included)

OPERATION



No-Volt Release Switch - (Fig. 19)



- Plug machine into socket.
- Put plug of switch into mains supply.
- Switch on router.
- Press green button to switch on. To switch off press red button.



WARNING: Isolate from power supply when making any adjustments.

Back Fence Adjustment - (Fig. 20)

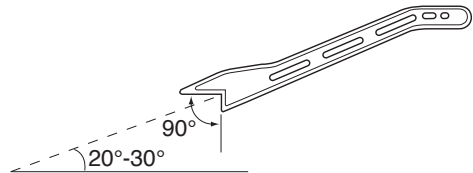


- Adjust back fence position by loosening the two knobs (A) and pushing the fence forwards or backwards.
- Lock fence position by tightening the two knobs (A).
- To adjust fence cheeks loosen four back knobs (B). Slide cheeks in and out to suit cutter. Leave gap of 3mm between cheek and cutter.
- Lock cheeks by tightening four knobs (B).

Pushstick Operation



The pushstick has been designed for use with a router table, and should always be used when making any cut less than 300mm in length or, when feeding the last 300mm of a longer cut. The birds mouth is 90° and should be angled at between 20° to 30° to the workpiece to suit the height of the machinist.

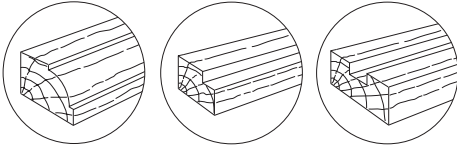


CAUTION: Do not use the pushstick as a lever or for uses other than those envisaged.



CAUTION: Compliance with the safety requirements of the regulations in force is nullified by any modification or tampering with the pushstick.

Edge Moulding and Grooving



- Isolate from power source.
- Fit cutter.
- Set back fence position.
- Set top and side pressures.
- Fit guard.
- Check all knobs are tight.
- Plug into power supply.
- Switch on.
- Feed right to left.
- Switch off.

Feed Direction - (Fig. 21)

- Always work with constant, medium rate. Feeding too slow will result in burn marks and excessive heat build up of the cutter.
- Good results will be obtained by removing small amounts of material in several passes.
- Always feed work in the opposite direction to the direction of rotation of the router cutter.

Stopped Moulding - (Fig. 22)

- Isolate from power supply.
- Fit cutter.
- Set back fence position. Fit some stops to back fence using cramps or use accessory limit stop Ref.WRT/2 (1 off).
- Fit guard.
- Check all knobs are tight
- Plug into power supply.
- Switch on.
- Drop material against infeed stop A and pivot into cutter.
- Feed right to left, until reaching outfeed limit stop B.
- Pivot at outfeed stop.
- Switch off.

Mitre Fence - (Fig. 23)

- Isolate from power supply.
- Fit cutter.
- Adjust angle of mitre fence by loosening knob and turning protractor head to line up angle required with arrow.
- Place component onto mitre fence.
- Plug into power supply.
- Feed right to left holding component securely.
- Switch off.



NOTICE: The mitre fence has fixing holes to allow a splach block to be secured using screws (not supplied).

Lead-on Pin - (Fig.24 - 24c)

- Isolate from power supply.
- Fit lead-on pin into threaded hole using a slotted screwdriver.
- Move back fence back.
- Fit self guided cutter.
- Fit top guard.
- Plug into power supply.
- Support component onto the lead-on pin and swing into cutter and contact bearing guide.
- Mould component.
- Switch off.



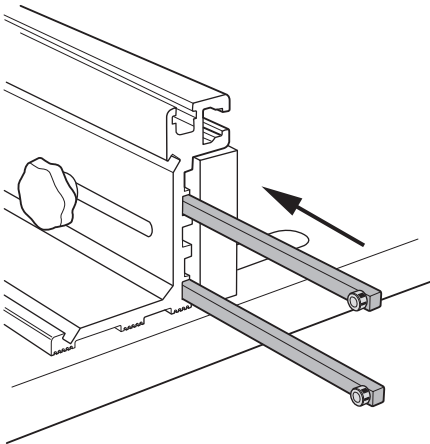
WARNING: Guard removed for clarity. Ensure guard is fitted when using self guided cutters.



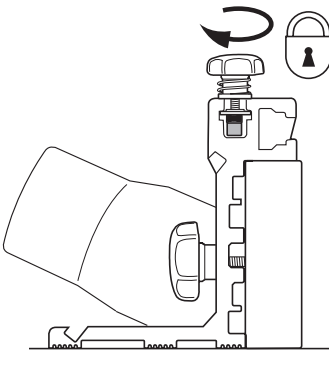
NOTICE: The lead-in pin can be stored in the pin park hole in the back fence when not in use.

Edge Planing 

The router table fence features fully independent fence cheeks which allow the fence to double as a vertical planer for a 1.4mm or 2.4mm offset. To set up for edge planing, remove the two jointing rods which are stored in the top slot of the fence, loosen the outfeed fence cheek and place the rods into the shallow recesses behind the outfeed fence.

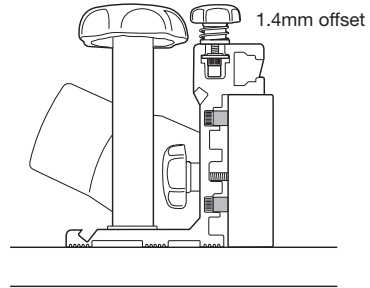


The rods can be parked in the T-slots in the top of the back fence. The rods are held by tightening the knobs.

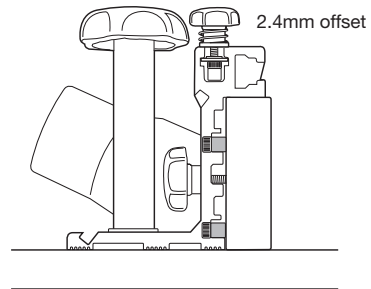


To position the fence at the 1.4mm setting, slide the rods into the deeper recesses, as shown below and tighten

the fence cheeks locking knobs. To position the fence at the 2.4mm setting, slide



the rods into the shallower recesses, as shown below and tighten the fence cheeks locking knobs.



After use of the table, keep assembled and store properly.

ACCESSORIES

Please use only Trend original accessories.

Hose and Connector Ref. CRT/4 - (Fig. 25)

The back fence is provided with an extraction point for connection to suitable vacuum extractors. The internal hole diameter is 57mm (2-1/4").

- Only a vacuum extractor unit recommended for use in the workshop should be used.
- A suitable adaptor and extraction hose can be purchased as optional accessories.

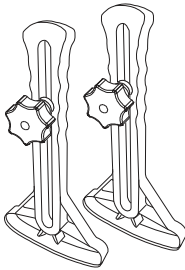
The accessory hose Ref. CRT/4 has an outside diameter of 39mm and inside diameter of 32mm. It is fitted with the hose adaptor which is a three piece design that allows the hose to swivel freely.

- Assemble the hose adaptor onto the end of the hose as shown and insert into back fence.
- Fit the other end of the extraction hose to your dust extractor.

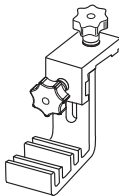
Ref. CRT/4 Hose 39mm OD x 32mm ID x 3m.

Single Pressures and Limit Stop Ref. WRT/1, WRT/2

- Ref. WRT/1 - Pair of single pressures that can fit to back fence face extrusion for machining longer lengths of timber.

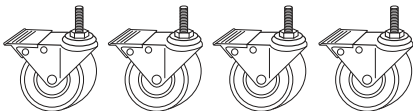


- Ref. WRT/2 - Limit stop with height adjustment fits to back fence top extrusion



Castors Ref. WRT/3

- Ref. WRT/3 - Castors (4 pack) with foot operated lock. Raises router table height by 35mm. Replaces standard feet.



MAINTENANCE

The router table has been designed to operate over a long period of time with a minimum of maintenance. Continual satisfactory operation depends upon proper tool care and regular cleaning.

- Replace the cutter insert when worn out.

Cleaning

- Keep the grooves clear of sawdust. Regularly clean the table with a soft cloth.
- The pushstick is made of thermoplastic material which is resistant to solvents, oils, greases and water. Do not use concentrated acids or alkalies for cleaning.

Lubrication

- Your router table requires no additional lubrication. Do not use PTFE spray on the plastic components of the table.

Storage

- When not in use the table should be stored safely. It is advisable to cover the table.
- The pushstick is provided with holes to store easily on the table.

ENVIRONMENTAL PROTECTION

Recycle raw materials instead of disposing as waste.



Accessories and packaging should be sorted for environmental-friendly recycling. Separate collection. This product must not be disposed of with normal household waste.

Household User

Local regulations may provide for separate collection of electrical products from the household, at municipal waste sites or by retailer when you purchase a new product. Please call Trend Customer Services for advice as to how to dispose of unwanted Trend electrical products in an environmentally safe way or visit www.trend-uk.com

Business User

Please call Trend Customer Services for disposal of unwanted Trend electrical products.

GUARANTEE

The unit carries a manufacturers guarantee in accordance with the conditions on the enclosed guarantee card. For the location of your nearest Trend Service Agent, please call Trend Customer Services or see Stockist Locator at www.trend-uk.com

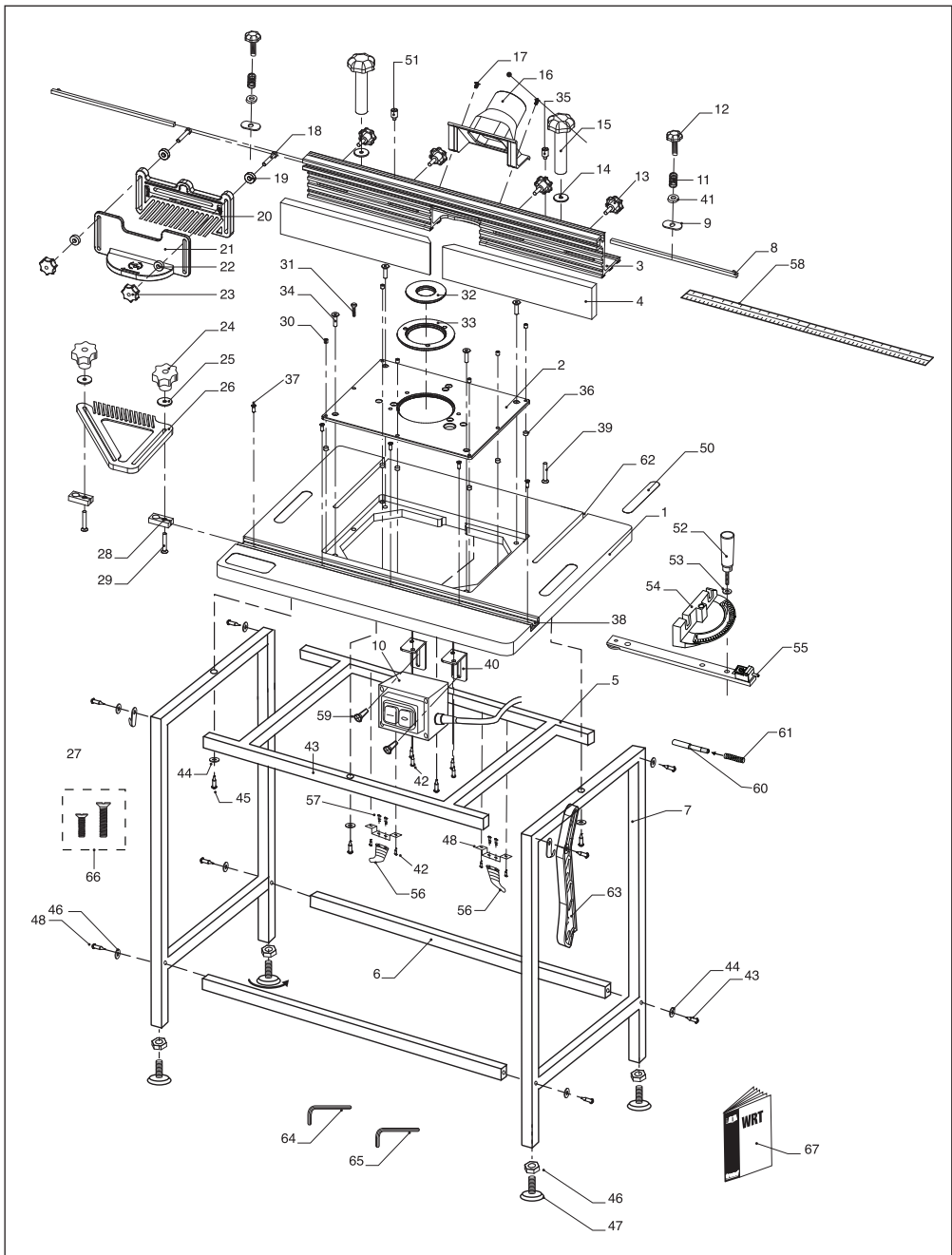
PLEASE USE ONLY TREND ORIGINAL SPARE PARTS.

WRT - SPARE PARTS LIST			v1.0 03/2017
No.	Qty.	Desc.	Ref.
1	1	Table Top	WP-WRT/01
2	1	Insert Plate	WP-WRT/02
3	1	Back Fence	WP-WRT/03
4	2	Fence Cheek	WP-WRT/04
5	1	Top Frame	WP-WRT/05
6	2	Crossbar	WP-WRT/06
7	2	Legs	WP-WRT/07
8	2	Edge Planing Rod	WP-WRT/08
9	2	T-Nut for Edge Planing Knob	WP-WRT/09
10	1	No Volt Release Switch 240V UK Plug	NVRS/2/240V
	1	No Volt Release Switch 230V EURO Plug	NVRS/2/230V/E
11	2	Spring for Edge Planing Knob	WP-CRTMK3/11
12	2	Knob for Edge Planing Assembly	WP-CRTMK3/12
13	4	Knob UNC 1/4 - 20 x 3/4" Male for Fence Cheek	WP-CRTMK3/13
14	2	Washer 8mm x 23mm x 2mm for Back Fence Knob	WP-CRTMK3/14
15	2	Back Fence Knob UNC 5/16 Female	WP-CRTMK3/15
16	1	Dust Spout	WP-CRTMK3/16
17	2	Machine Screw M4 x 8mm Pozi for Dust Spout	WP-CRTMK3/17
18	2	T Bolt UNC 1/4 - 20 x 1-3/4" for Top Guard	WP-CRTMK3/18
19	2	Washer for T Bolt	WP-CRTMK3/19
20	1	Top Pressure	WP-CRTMK3/20
21	1	Top Guard	WP-CRTMK3/21
22	2	Washer Plastic for Top Guard	WP-CRTMK3/22
23	2	Knob UNC 1/4 - 20 Female for Plastic Guard	WP-CRTMK3/23
24	2	Knob for Side Pressure	WP-CRTMK3/24
25	2	Washer 8mm x 23mm x 2mm for Side Pressure Bolt	WP-CRTMK3/25
26	1	Side Pressure	WP-CRTMK3/26
27	2	Hook for Pushstick WRT	WP-WRT/27
28	2	Plate for Side Pressure Bolt	WP-CRTMK3/28
29	2	Machine Screw Csk 1/4" x 1-9/16" Phillips	WP-CRTMK3/29
30	7	Set Screw M6 x 6mm for Fixing Plate	WP-CRTMK3/30
31	3	Machine Screw Csk M6 x 15mm Phillips	WP-CRTMK3/31
32	1	Insert Ring 31.8mm ID	WP-CRTMK3/32
33	1	Insert Ring 67.5mm ID	WP-CRTMK3/33
34	4	Machine Screw Csk M5 x 16mm Skt	WP-CRTMK3/34
35	1	Lead-on Pin	WP-CRTMK3/35
36	4	Magnet 8mm x 5mm	WP-CRTMK3/36
37	1	Self Tapping Screw for Mitre Fence Extrusion	WP-CRTMK3/37
38	1	Mitre Fence Extrusion	WP-WRT/38
39	2	T Bolt UNC 1/4 x 1-1/4" x 2" Male for Back Fence	WP-WRT/39
40	2	Switch Bracket	WP-CRTMK3/40

WRT - SPARE PARTS LIST			v1.0 03/2017
No.	Qty.	Desc.	Ref.
41	2	Washer for Edge Planing Assembly	WP-CRTMK3/41
42	8	Self Tapping Screw Pan 4mm x 16mm Phillips	WP-CRTMK3/42
43	8	Machine Screw Carriage UNC 1/4 X 2" Frame Skt	WP-WRT/43
44	12	Washer for Leg Assembly	WP-WRT/44
45	4	Machine Screw UNC 1/4 x 1-1/4" Skt for Frame to Table Top	WP-WRT/45
46	4	Nut Hex for Foot Assembly	WP-WRT/46
47	4	Foot	WP-WRT/47
48	4	Cable Management Clip Bracket	WP-WRT/48
49	-	-	-
50	2	Scale Label	WP-CRTMK3/50
51	1	T11 Quick Raiser Handle Park Pin	WP-WRT/51
52	1	Mitre Fence Knob	WP-CRTMK3/52
53	1	Washer for Mitre Fence	WP-CRTMK3/53
54	1	Mitre Fence Body	WP-CRTMK3/54
55	1	Mitre Fence Rail and Index Head	WP-CRTMK3/55
56	2	Cable Management Clip	WP-CRTMK3/56
57	4	Self Tapping Screw Pan 4mm x 12mm Phillips	WP-CRTMK3/57
58	1	Back Fence Scale	WP-WRT/58
59	2	Machine Screw Pan M6 x 16mm Phillips	WP-CRTMK3/59
60	1	Mitre Fence Location Pin	WP-CRTMK3/60
61	1	Mitre Fence Location Pin Spring	WP-CRTMK3/61
62	2	Table Top Back Fence Extrusion	WP-WRT/62
63	1	Pushstick	PUSHSTICK/1
64	1	Hex Key 3mm A/F	WP-AP/03
65	1	Hex Key 4mm A/F	WP-AP/04
66	1	Router Screw Fixing Pack Csk	FIX/KIT/2
67	1	Manual	MANU/WRT

WRT - SPARE PARTS DIAGRAM

v1.0 03/2017





Trend Machinery & Cutting Tools Ltd.

Watford, WD24 7TR, England

Tel: 0044(0)1923 249911

technical@trendm.co.uk

www.trend-uk.com

EU Importer:

Trend Tool Technology Ltd.

3rd Floor, Kilmore House, Park Lane, Spencer Dock,
Dublin 1, Ireland



RECYCLABLE

© Trend Machinery & Cutting Tools Ltd. 2021 .

© All trademarks acknowledged E&OE

© Copyright Trend 2021. No part of this publication may be reproduced, stored or transmitted in any form without prior permission.

Our policy of continuous improvement means that specifications may change without notice.

Trend Machinery and Cutting Tools cannot be held liable for any material rendered unusable or any form of consequential loss. E&OE

© All trademarks acknowledged.



MANU/WRT v3.0