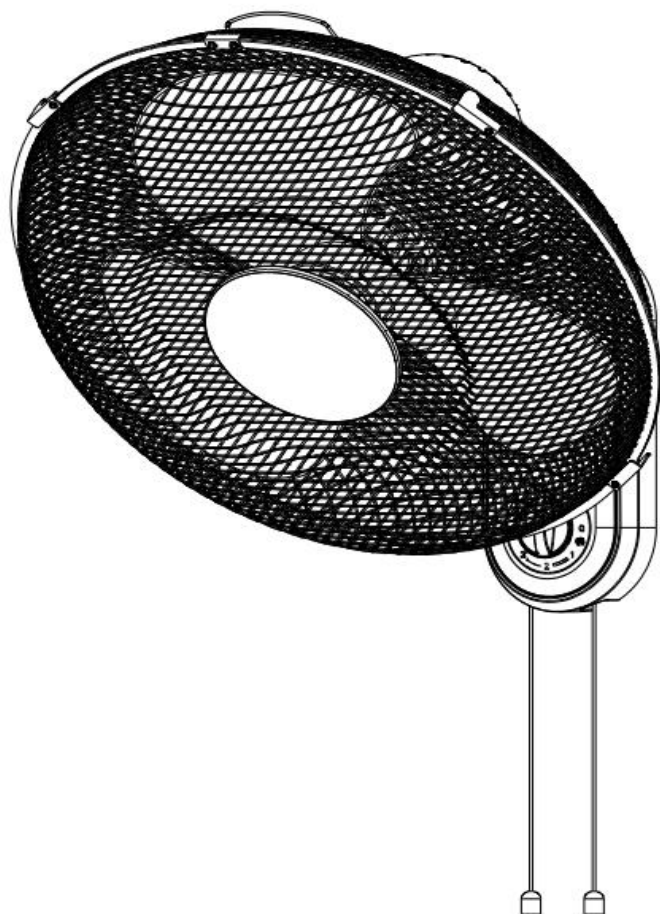


Original User Instructions



16-inch Wall Fan

SKU: AB387



READ BEFORE USE
PLEASE KEEP THESE INSTRUCTIONS FOR FURTHER REFERENCE

CONTENTS

● WHAT'S IN THE BOX-----	3
● SPECIFICATIONS-----	4
● EXPLANATIONS AND SYMBOLS, CAUTIONS AND WARNINGS-----	4
● IMPORTANT SAFETY WARNINGS-----	5
● PRODUCT DESCRIPTION AND IDENTIFICATIONS-----	7
● ASSEMBLY AND OPERATING INSTRUCTIONS-----	8
● CARE AND CLEANING-----	11
● TROUBLE SHOOTING-----	11
● DECLARATION OF CONFORMITY / PERFORMANCE-----	12
● ENVIRONMENTAL INFORMATION-----	13
● WARRANTY-----	13
● CUSTOMER SUPPORT-----	14

If you do not have all these items, please contact:

www.toolstation.com/contact

Telephone 0808 100 7211 Mobile friendly 0330 333 3303

Email info@toolstation.com

WHAT'S IN THE BOX



Mesh guards fixing screw and nut



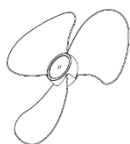
Front mesh guard



Rear mesh guard



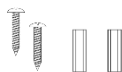
Blade nut



Fan blade



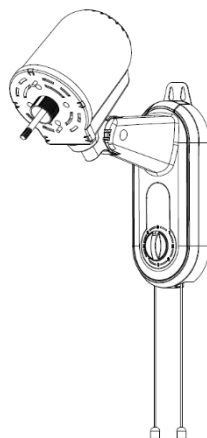
Rear mesh nut



Screws and wall plugs



User instruction manual



Fan motor and base assembly

SPECIFICATION

- 220-240V~,50-60Hz
- Oscillation and tilt function
- Pull cord switch
- 3 speed settings

TECHNICAL DATA

SKU/Model	AB387/TX-1605W
Rated Voltage	220-240V~,50Hz-60Hz
Rated Power Rate	45W
Plug	BS plug, non-revirable,3A fuse
Power Cord Length(mm)	1600
Power Cord Spec	2x0.5mm ²
Dimensions (H x D x W-mm)	435x150x430
Oscillation Angle	75°
Maximum air flow-m ³ /min	43.08
Net Weight approx.(g)	2040
Noise level-dB(A)	53

EXPLANATIONS AND SYMBOLS, CAUTIONS AND WARNINGS



UK Conformity Assessed



The product complies with the applicable European Directives and an evaluation method of conformity for these Directives was carried out.



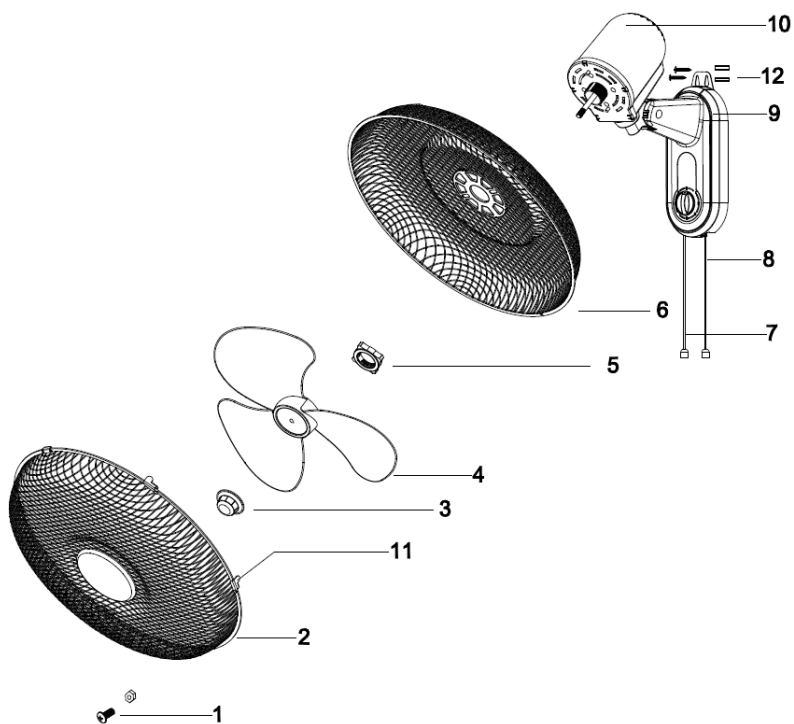
Protection class II. Double insulation

IMPORTANT SAFETY WARNINGS

- Read rules for safe operation and instructions carefully.
- The product is for household use only.
- Indoor use only.
- If the supply cord is damaged, it must be replaced by manufacturer or its service agent or a similarly qualified person in order to avoid a hazard.
- Connect the appliance to single-phase AC supply of the voltage specified on the rating plate.
- To protect against the risk of electrical shock, do not immerse the unit, cord or plug in water or other liquid.
- Never insert fingers, pencils, or any other object through the mesh when fan is running.
- Disconnect fan when moving from one location to another.
- Be sure fan is on a stable surface when operating to avoid overturning.
- **DO NOT** use fan in window, rain may create electrical hazard.
- **DO NOT** place anything on top of unit.
- **DO NOT** run the cable under carpeting. Do not cover the appliance or the cable. Arrange the cable away from walkways to where it can be tripped over.
- Use the fan in a well-ventilated area. While using, distance of no less than 20cm should be kept away from wall or corner to ensure the air intakes or exhaust openings should not be blocked unexpectedly.
- The fan must not be located immediately below or besides a curtain or the likes.
- Never leave the fan unattended while it is in use. When the appliance is not in use and before cleaning, unplug the appliance from the outlet.
- Extreme caution is necessary when any fan is used by or near children, invalids or elderly person and whenever the fan is left operating and unattended.
- This appliance can be used by children aged from 8 years and above and persons with reduced physical, sensory or mental capabilities or lack of experience and knowledge if they have been given supervision or instruction concerning use of the appliance in a safe way and understand the hazards involved.
- Children shall not play with the appliance.

- To avoid the risk of accidental strangulation from the supply cord all children and vulnerable people must be supervised when in the vicinity of the product whether it is working or not.
- Cleaning and user maintenance shall not be made by children without supervision.
- **DO NOT** attempt to repair or adjust any electrical or mechanical functions on this unit. Doing so will void your warranty. The inside of the unit contains no user serviceable parts. All servicing should be performed by qualified personnel only.

PRODUCT DESCRIPTION AND IDENTIFICATIONS



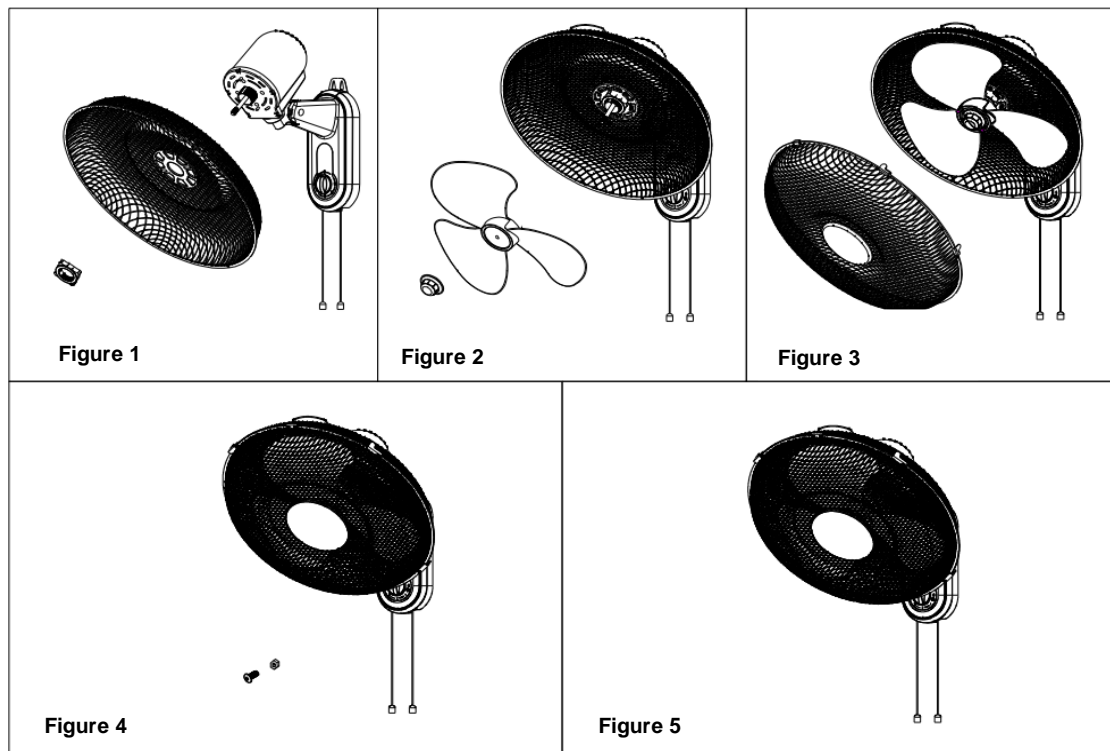
1. Mesh guards fixing screw and nut
2. Front mesh guard
3. Blade nut
4. Blade
5. Rear mesh nut
6. Rear mesh guard
7. Oscillation pull cord
8. Switch knob pull cord
9. Fan base
10. Fan motor
11. Mesh guard clips
12. Screws and wall plugs

ASSEMBLY AND OPERATING INSTRUCTIONS

The fan is packaged with some parts unattached and requiring a little, simple assembly.

WARNING: Do not operate until fully assembled and with all parts correctly attached. **The fan blade may have sharp edges. Handle with extreme care.**

Assembly



- Install the rear mesh guard onto the motor and secure it by tightening the rear mesh guard nut, as shown in Figure 1.
- Thread the fan blade onto the motor output shaft and secure the blade by tightening the blade nut, as shown in Figure 2.
- Align the front mesh guard with the rear mesh guard, then secure both mesh guards using the mesh guard clips on the mesh guards, as shown in Figure 3.
- Pass the mesh guards fixing screw through the fixing hole at the bottom of the mesh guards and secure it with a tightening nut. Since the screw and nut are relatively small, a screwdriver or needle-nose pliers may be required here to assist in the process, as shown in Figure 4.
- The assembled fan is shown in Figure 5.

Installation

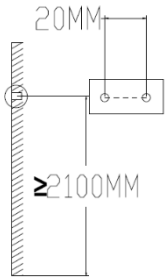


Figure 6

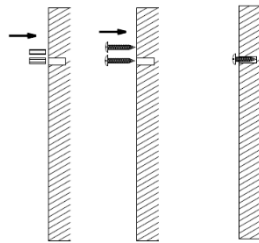


Figure 7

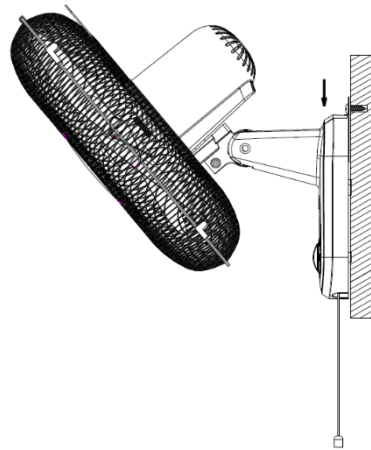


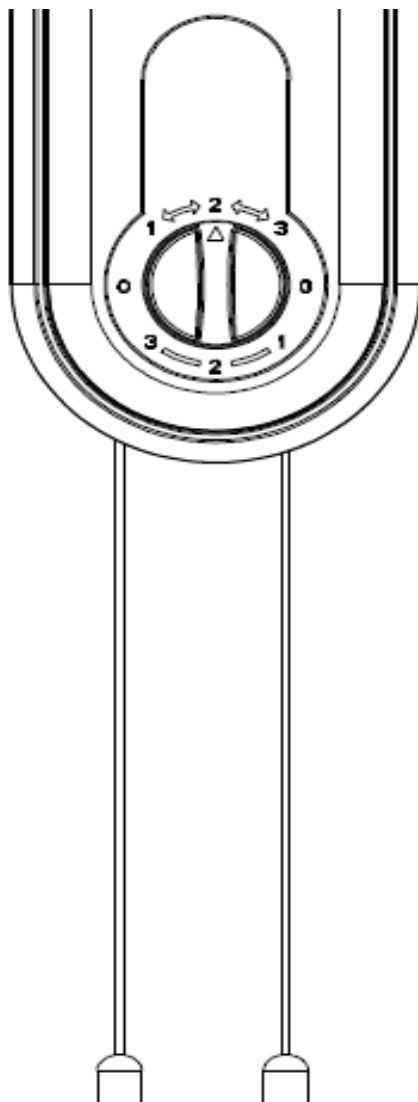
Figure 8

- **WARNING! Before mounting the electric fan onto the wall, ensure that the wall is sturdy and robust. Drilling into loose or unstable wall materials may cause the fixing screws to become loose, resulting in an insecure mounting of the fan!**
- Drill two holes with the same height at 2100mm (the height can be adjusted according to actual needs to suit your optimal requirements) from the ground, with the depth of 40mm and spacing of 20mm. As shown in Figure 6.
- Insert the two wall plugs into the drilled holes respectively, as shown in Figure 7.
- Screw the two screws into the wall plugs, but do not fully tighten them. Leave a section of approximately 1.5-2mm exposed to facilitate the hanging of the fan, as shown in Figure 7.
- Align the hanging holes on the base of the electric fan with the screws, hang the fan in place, and then fully tighten the screws into the wall plugs. At this time, the installation of the wall fan is completed, as shown in Figure 8.
- **WARNING! Double check the electric fan is well assembled without any loose parts before mounting it on wall. After mounting the fan onto the wall, it is essential to check that the mounting is secure and that the fixing screws on the wall are not loose. If there is any sign of looseness, please reinstall and ensure that the mounting is firm, to prevent the fan from falling and causing injury.**

Operating instructions

1. **Turn on/off:** Insert the plug into the socket. Pull the pull cord (8) once, and the speed control knob will rotate accordingly. When the arrow on the speed control knob points to any of the positions 1, 2, or 3, the fan will start to rotate. When the arrow on the speed control knob points to the position 0, the fan will gradually slow down until it comes to a complete stop.

2. **Speed control:** Pull the pull cord, the arrow on the speed control knob points to "Low speed" at position 1, "Medium speed" at position 2, and "High speed" at position 3.
3. **Oscillation:** Pull the pull cord (7) once, and the fan will begin to oscillate from side to side.
4. **Caution:** The fan should always be switched off when making any manual adjustment. Turn the speed control knob to "0" and unplug the fan after use.



CARE AND CLEANING

- Disconnect the power and allow the fan rotation to stop.
- Use only a damp cloth to clean the enclosure.
- Do not use any chemical or abrasive cleaners.
- When the fan is not used for long periods of time, it should be protected from dust and stored in a clean dry place.
- Clean it with soft cloth or soft thin paper. If the dust is uneasy to wipe away, rub it with soap water.
- **CAUTION:** The fan blade may have sharp edges. Handle with extreme care.
- **WARNING!** unplug the fan before cleaning.

TROUBLE SHOOTING

Use this section to help you to try and solve any problems you may have:

PROBLEM	POSSIBLE CAUSES	REMEDIES
The fan is not operating.	<ul style="list-style-type: none"> • The plug is not fully inserted into the wall outlet • The wall outlet experienced an overload • Fuse in plug fails 	<ul style="list-style-type: none"> • Make sure that the plug is fully inserted into the base AC wall outlet. • Unplug the fan. Inspect the main electrical breaker box. If you find a tripped breaker, reset it. If the problem persists, contact a qualified, licensed electrician • Remove and inspect the fuse located in the plug. If the fuse is tripped, replace with the appropriate 3 Amp fuse. If the problem persists, contact a qualified, licensed electrician
The fan is rattling	<ul style="list-style-type: none"> • The mesh guards are not secured properly • Screws are not securely fastened 	<ul style="list-style-type: none"> • Secure the mesh guards • Tighten screws.

NOTE: IF YOU EXPERIENCE A PROBLEM WITH YOUR APPLIANCE, PLEASE DO NOT ATTEMPT TO OPEN OR REPAIR THE APPLIANCE YOURSELF. DOING SO MAY VOID THE WARRANTY AND COULD CAUSE DAMAGE OR PERSONAL INJURY. IF THE PROBLEM STILL PERSISTS, PLEASE CONTACT US BY REFERRING TO THE SERVICE & SUPPORT INFORMATION ON THE FOLLOWING PAGE.

DECLARATION OF CONFORMITY / PERFORMANCE



Product Code: AB387 (TX-1605W)
Product Description: 16-inch Wall Fan

1. Toolstation (company number 04372131)

This declaration of conformity is issued under the sole responsibility of Toolstation

2. Object of the declaration

The object of the declaration described above is in conformity with the relevant Community harmonization legislation:

- Electrical Equipment (Safety) Regulations 2016 (LVD 2014/35/EU)
- Electromagnetic Compatibility Regulations 2016(EMC 2014/30/EU)
- The Restriction of the Use of Certain Hazardous Substances in Electrical and Electronic Equipment Regulations 2012(RoHS 2011/65/EU&2015/863/EU)
- REACH (EC) No 1907/2006

-

3. References to the relevant standards used (or references to the specifications in relation to which conformity is declared:

-

- BS EN 62233
- BS EN 60335-2-80
- BS EN 60335-1
- BS EN 55014-1
- BS EN 55014-2
- BS EN 61000-3-2
- BS EN 61000-3-3

-

-

4. Additional information:

Signed for and on behalf of Toolstation Limited

ENVIRONMENTAL INFORMATION



The symbol on the product or its packaging indicates that this product must not be disposed of with your other household waste. Instead, it is your responsibility to dispose of your waste equipment by handing it over to a designated collection point for the recycling of waste electrical and electronic equipment. The separate collection and recycling of your waste equipment at the time of disposal will help conserve natural resources and ensure that it is recycled in a manner that protects human health and the environment. For more information about where you can drop off your waste for recycling, please contact your local authority, or where you purchased your product.

WARRANTY

Toolstation products deliver reliable service for normal, household use in domestic settings. All Toolstation products are individually tested before leaving the factory.

If you are a consumer and you experience a problem with your Toolstation product, which is found to be defective due to faulty materials or workmanship within the Warranty Period, this Toolstation Warranty will cover repair or - at the discretion of Toolstation – replacement with a functionally equivalent Toolstation product.

Your product is under warranty for 1 year from the date of purchase or the date of delivery of the product, if later.

The warranty is subject to the following provisions:

- The warranty does not cover accidental damage, misuse, parts, knobs, or consumable items.
- The product must be correctly installed and operated in accordance with the instructions contained in this manual.
- It must be used solely for domestic purpose.
- The warranty will be rendered invalid if the product is re-sold or has been damaged by inexperienced repair.
- Specifications are subject to change without notice.
- The manufacturer disclaims any liability for the incidental or consequential damages.
- The warranty is in addition to, and does not diminish your statutory or legal rights.

CUSTOMER SUPPORT

www.toolstation.com/contact

Call us 0808 100 7211

Mobile friendly 0330 333 3303

Email: info@toolstation.com

Made in China

