

Original User's Instructions

12 Litre Dehumidifier
SKU: 70488/OL12-BD023B



READ BEFORE USE

PLEASE KEEP THESE INSTRUCTIONS FOR FURTHER REFERENCE

CONTENT

● WHAT'S IN THE BOX -----	3
● TOOLS REQUIRED-----	4
● SPECIFICATIONS -----	4
● EXPLANATIONS AND SYMBOLS, CAUTIONS AND WARNINGS-----	5
● IMPORTANT SAFETY WARNINGS -----	6
● PRODUCT DESCRIPTION AND IDENTIFICATIONS-----	9
● INSTALLATION AND OPERATING INSTRUCTIONS -----	11
● CARE AND CLEANING -----	15
● TROUBLE SHOOTING-----	16
● DECLARATION OF CONFORMITY / PERFORMANCE-----	17
● ENVIRONMENTAL INFORMATION-----	18
● GUARANTEE -----	19
● CUSTOMER SUPPORT -----	19

WHAT'S IN THE BOX



Dehumidifier



Drain Hose

If you do not have all these items, please contact:

www.toolstation.com/contact

Telephone 0808 100 7211 Mobile friendly 0330 333

3303 Email info@toolstation.com

TOOLS REQUIRED

- No Tools are required

SPECIFICATIONS

- Dehumidifier with 12 Litre Capacity
- Three Modes – Auto, Continuous/Drying or Sleep
- Built in 12-hour Timer
- Built in Two Speed Fan
- Adjustable Humidity Level
- Child Lock
- Water Tank Full Alarm
- Internal Water Tank with Drain Hose Attachment

TECHNICAL DATA

SKU/Model	70488/OL12-BD023B
Rated Voltage	220-240V~,50Hz
Rated Power	185W 1.0A (30°C, 80%RH)
Rated Capacity	12L/D (30°C, 80%RH)
Water Tank Capacity	2 Litre
Noise Level	≤36dB (A)
Maximum Refrigerant Charge	R290/55g
Maximum suction side working pressure	0.7MPa
Maximum exhaust side working pressure	3.2MPa
Minimum Room Size	4m ² (Floor Area)
Plug	BS plug
Power Cord Length(mm)	1500mm
Power Cord Spec	H05VV-F3G0.75mm ²
Assembly Dimension (H x L x W-mm)	460 x 255 x 220 (with Castors)
Net Weight (approx.) Kg.	11

EXPLANATIONS AND SYMBOLS, CAUTIONS AND WARNINGS



Earthing connection



The product complies with the applicable European Directives and an evaluation method of conformity for these Directives was done.



UK Conformity Assessed



This marking indicates that this product should not be disposed with other household wastes. To prevent possible harm to the environment or human health from uncontrolled waste disposal, recycle it responsibly to promote the sustainable reuse of material resources.



This symbol indicates the presence of flammable materials, in this instance R290 Refrigerant Gas.

IMPORTANT SAFETY WARNINGS

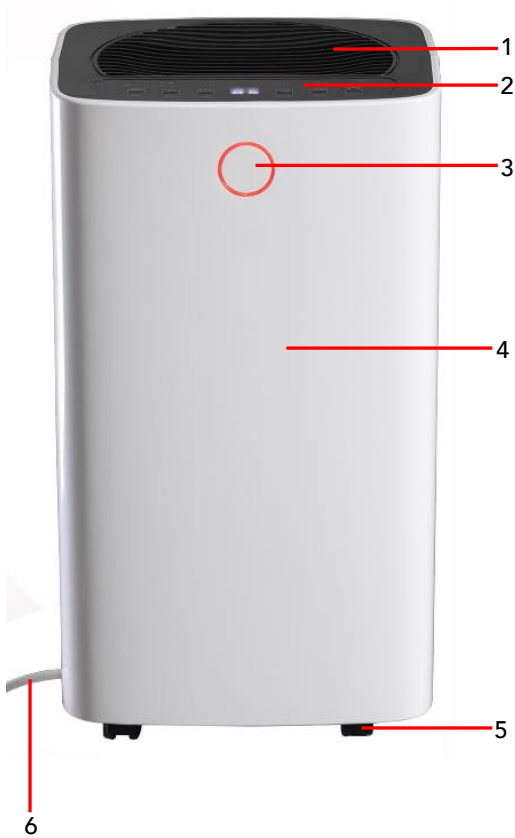
- Before using your unit into the mains, visually check that the unit is intact and has not suffered any transit damage.
- Check that the voltage indicated on the data plate corresponds with that of the local network before connecting the appliance to the mains power supply.
- Always use this appliance on a solid, level, non-flammable surface.
- The Dehumidifier shall not be exposed to dripping or splashing and that no objects filled with liquids, such as vases, shall be placed on the apparatus.
- **DO NOT** immerse the Dehumidifier or its power cord in water or any other liquids.
- **DO NOT** leave the Dehumidifier unattended during use.
- **DO NOT** leave the Dehumidifier unattended whilst connected to a mains power supply.
- Avoid touching any moving parts within the appliance.
- **DO NOT** insert fingers, pencils or any other objects through the guard.
- **DO NOT** push objects into any openings as damage to the product and/or electric shock may occur.
- This appliance can be used by children aged from 8 years and above and persons with reduced physical, sensory or mental capabilities or lack of experience and knowledge if they have been given supervision or instruction concerning use of the appliance in a safe way and understand the hazards involved. Children shall not play with the appliance. Cleaning and user maintenance shall not be made by children without supervision.
- Children of less than 3 years should be kept away unless continuously supervised.
- Close supervision is required when using this Dehumidifier near children.
- **DO NOT** leave this Dehumidifier within reach of children.
- It is imperative to unplug from mains supply after the Dehumidifier has been used, before it is cleaned and whilst being repaired.
- Unplug after each use.
- **DO NOT** operate this appliance if the power cord or plug are damaged. Ensure that the power cord is not stretched or exposed to sharp objects or edges.
- **DO NOT** operate this appliance after a malfunction or after being dropped or damaged in any way.

- **DO NOT** allow the mains cable to hang over sharp edges or come in contact with hot surfaces.
- **DO NOT** run the mains cable under carpets, rugs, etc.
- Individuals who operate or work in the refrigerant circuit must have the appropriate certification issued by an accredited organization that ensure competence in handling refrigerants according to a specific evaluation recognized by associations in the industry.
- Repairs must be performed on the recommendation from the manufacturing company. Maintenance and repairs that require the assistance of other qualified persons must be performed under the supervision of an individual specified in the use of flammable refrigerants.
- This product is intended for household use only and should not be used for industrial purposes.
- **DO NOT** connect the appliance to an electrical outlet using an extension lead. If an outlet is not available, one should be installed by a qualified electrician.
- **DO NOT** use the mains plug or external timer as a means of switching the Dehumidifier on or off. Use the ON/OFF button located on the control panel.
- Always place the unit on a dry and stable surface.
- The appliance should not be placed in a laundry or wet room.
- **DO NOT** position the Dehumidifier close to sources of heat and/or ignition such as radiators, heaters, other electronic equipment, etc.
- No naked flame sources, such as lighted candles, should be placed on the Dehumidifier.
- The appliance must be installed and used in a room with a floor area larger than 4m².
- This appliance contains R290 refrigerant gas. For quantity see rating label on rear of the unit.
- R290 refrigerant gas complies with the EU environmental directives.
- Refrigerant gas may be odourless, if the appliance is used or stored in an unventilated room, the room must be as such to prevent stagnation of possible leaks of refrigerant gas as there could be a danger of fire or explosion hazard should the refrigerant come into contact with electric heaters, stoves or other sources of ignition.
- The refrigerant system should not be perforated.
- The appliance must be stored in such a way as to prevent mechanical

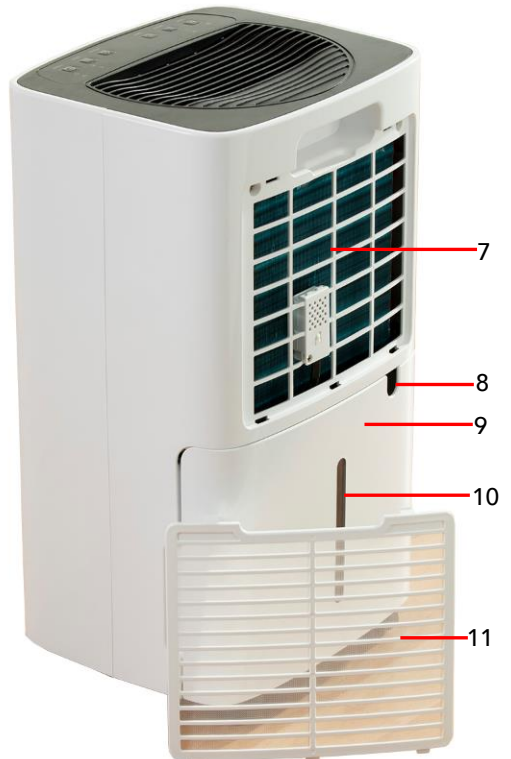
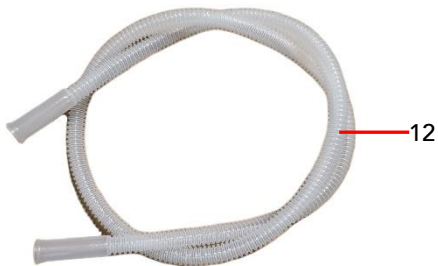
failure.

- **DO NOT** use any accessories or attachments with this product other than those supplied or recommended by supplier.
- **DO NOT** use this product for anything other than its intended use.
- The Dehumidifier must always be stored and transported upright, otherwise irreparable damage be caused to the compressor; if in doubt, wait at least 24 hours before restarting the unit.
- Avoid restarting the Dehumidifier unless 3 minutes have passed since being turned off. This prevents damage to the compressor.

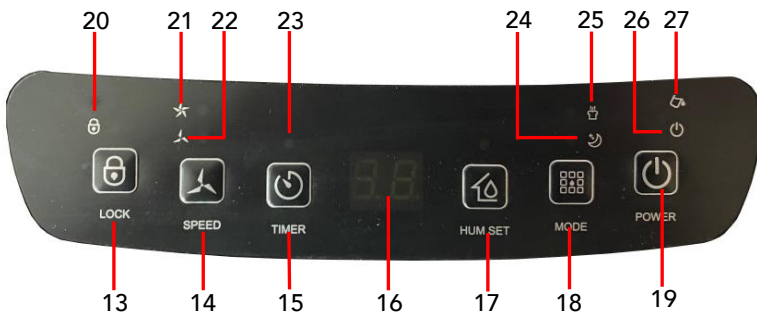
PRODUCT DESCRIPTION AND IDENTIFICATIONS



1. Air Outlet
2. Control Panel
3. Colour Digital Display
4. Main Body
5. Castors
6. Mains Cable
7. Cooling Element
8. Drain Hose Groove
9. Water Tank
10. Water Gauge
11. Air Filter
12. Drain Hose



CONTROL PANEL

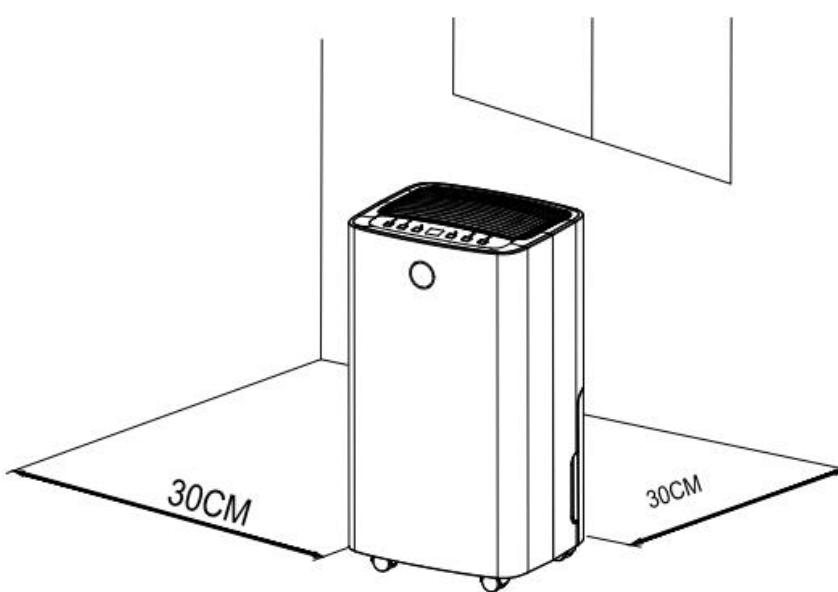


13. Child Lock Button
14. Fan Speed Button
15. Timer Button
16. LED Display
17. Humidity Set Button
18. Mode Button
19. Power Button
20. Child Lock Indicator
21. High Fan Speed Indicator
22. Low Fan Speed Indicator
23. Timer Indicator
24. Sleep Mode Indicator
25. Continuous/Clothes Drying Mode Indicator
26. Power ON Indicator
27. Tank Full Indicator

INSTALLATION AND OPERATING INSTRUCTIONS

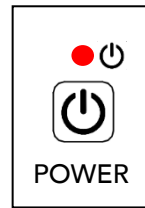
INSTALLATION

- Place the unit on a firm, level surface in an area with at least 30cm of free space on all sides to allow for proper air circulation.
- Never install the unit where it could be subject to:
 1. Heat sources such as radiators, cookers/stoves or other products that produce heat.
 2. In an area where oil or water may be splashed.
 3. Direct sunlight.
 4. Mechanical vibration or shock.
 5. Excessive dust.
 6. Lack of ventilation, such as cabinet or bookcase.
 7. An uneven surface.



OPERATING THE DEHUMIDIFIER

- Insert the mains plug into the nearest available socket.
- The **Power On Indicator** (26) will illuminate as shown right:



- Press the **Power Button** (19) to power the unit up.
- The Dehumidifier will power up with a high fan speed and the humidity set to 50%. The **High Fan Speed Indicator** (21) will illuminate.
- Press the **Power Button** (19) again to turn the unit off, the compressor will stop immediately and the fan will shut down after a 30 second delay.



There are 3 modes, press the **Mode Button** (18) to select from:

1. Auto Mode

- If the ambient humidity is greater than or equal to the set humidity +3%, the fan will run and the compressor will run after 3 seconds.
- If the ambient humidity is less than or equal to the set humidity -3%, the compressor will stop working, the fan will stop working after a 30 second delay.
- Both the fan speed and humidity can be adjusted whilst in Auto mode.

2. Continuous/Drying Mode

- Press the **Mode Button** (18) until the **Continuous/Clothes Drying Mode Indicator** (25) illuminates. In this mode, the Dehumidifier will run continuously, however the humidity setting cannot be adjusted.

3. Sleep Mode

- Press the **Mode Button** (18) until the **Sleep Mode Indicator** (24) illuminates.
- The LED indicators on the **Control Panel** (2) will gradually dim and go out if the unit is left idle for 10 seconds, fan speed will also automatically switch from high speed to low speed.
- To 'wake' the unit up touch any button on the **Control Panel** (2), press the **Mode Button** (18) again to exit the sleep mode.
- If the ambient humidity is less than or equal to 57%, the compressor will stop working and the fan will shut down after a 30 second delay.
- If the ambient humidity is greater than or equal to 63%, the fan will start working and compressor will also start working after 3 seconds.
- Fan speed and humidity cannot be adjusted in Sleep mode.

Using the Timer



- Press the **Timer Button** (15) to enter the timer mode.
- The timer can be set in 1 hour increments, every press of the **Timer Button** (15) the set time will increase by 1 hour and the time will be displayed on the **LED Display** (16).
- The set time on the **LED Display** (16) will show as "07" for 7 hours, etc.
- The **Timer Indicator** (23) above the **Timer Button** (15) will illuminate during the set time period. After the set time period has ended, the **Timer Indicator** (23) will go out.
***Note:** If the Timer is set with the unit on, the Timer will turn the Dehumidifier off at the end of the set time.*
If the Timer is set with the unit in standby mode, (i.e. with the Dehumidifier plugged in but not running), the Timer will turn the Dehumidifier on at the end of the set time.
- To cancel the timer, press the **Timer Button** (15) until the **LED Display** (16) returns to "00".

Setting the Humidity Level



- Press the **Humidity Set Button** (17) to check the current ambient humidity, press the button again to set the desired humidity.
- After setting the desired humidity level, the **LED Display** (16) will confirm the set value for about 3 seconds and then return to show the current ambient humidity.
- To view the current ambient temperature at any point, press and hold the **Humidity Set Button** (17) for 3 seconds.

Note: The range of target humidity is 30%, 35%, 40%, 45%, 50%, 55%, 60%, 65%, 70%, 75% and 80%.

Note: In the "Continuous drying mode" the humidity cannot be changed.

Colour Digital Display (3)

The **Colour Digital Display** (3 – below right) will turn blue, green and red depending on the room humidity level in different ranges:

Ambient humidity \leq 45%, it turns blue.

$45\% \leq$ ambient humidity $<$ 65%, it turns green.

Ambient humidity \geq 65%, it turns red



Changing Fan Speed



Press the **Fan Speed Button** (14) to select the airflow speed:

- Low Fan Speed – the **Low Fan Speed Indicator** (22) will illuminate.
- High Fan Speed – the **High Fan Speed Indicator** (21) will illuminate.

*Note: In **Continuous drying mode** and **Sleep mode** the airflow speed cannot be adjusted.*

Using the Child Lock



Hold the **Child Lock Button** (13) for 3 seconds to turn the child lock function on and off.

The **Child Lock Indicator** (20) will illuminate whilst the Child Lock is operating

Water Tank Full Alarm



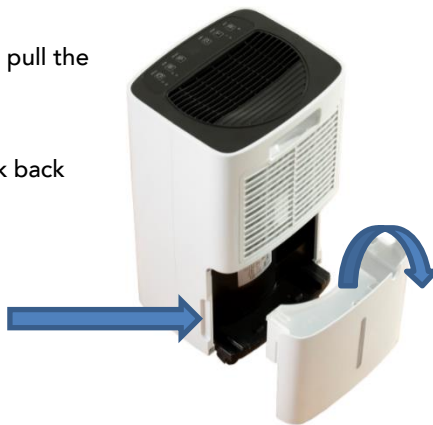
When the **Water Tank** (9) is full, the **Tank Full Indicator** (27) will illuminate and the unit will “buzz” 5 times.

To clear the alarm:

- When a “buzz” sounds, press any button to stop the alarm. The compressor and fan will shut down and all functions will pause until the **Water Tank** (9) has been emptied and replaced.

To empty the tank:

- Grasp the indents at either side of the **Water Tank** (9) and pull the tank free from the **Main Body** (4) with both hands.
- Remove the lid from the **Water Tank** (9) and empty.
- Place the lid back on the **Water Tank** (9) and push the tank back into the **Main Body** (4).



Continuous drainage

If preferred, continuous drainage can be used with the appliance rather than emptying the **Water Tank** (9).

For this option:

- Remove the **Water Tank** (9) as described above.
- Fit the **Drain Hose** (12) to the hose point on the rear of the **Main Body** (4), arrowed right.



- Replace the **Water Tank** (9) ensuring that the **Drain Hose** (12) fits through the **Drain Hose Groove** (8 – arrowed right) in the tank body.
- Run the **Drain Hose** (12) into a suitable drainage point.



CARE AND CLEANING

- Always disconnect the Dehumidifier from the mains supply before cleaning.
- Do not remove the float from the water tank as this will prevent the unit from starting.
- Clean the water tank with warm soapy water, do not use harsh abrasive chemicals.
- Clean the body of the unit with a soft damp cloth.
- To clean the filter, remove from the body and use a vacuum cleaner hose to remove any built-up dust or lint.
- If the filter is badly soiled it can be washed in warm soapy water and a mild detergent.
- Dry thoroughly before refitting to the unit.

Storage

Whilst not in use for long periods, please ensure that you:

1. Empty the water tank and wipe away any excess moisture from the tank and body.
2. Clean the filter.
3. Place the appliance in a cool and dry environment.

TROUBLE SHOOTING

Use this section to help you to try and solve any problems you may have:

<i>Problem</i>	<i>Possible Cause</i>	<i>Possible Solution</i>
Not working	No power	Ensure that the mains plug is inserted into a socket and that it is switched on.
	Water Full Indicator is illuminated	Empty the water tank
	Room temperature < 5°C, or > 35 °C	Unit will not operate below 5°C or above 35°C.
Unit not performing well	Is the air filter clogged?	Clean the air filter.
	Is the intake duct or discharge duct obstructed?	Remove the obstruction from the discharge duct or intake duct.
No air intake	Is the filter clogged?	Clean the air filter.
Noisy when running	Ensure the unit is on a level surface.	Place the unit on a solid, level surface.
	Is the filter clogged?	Clean the air filter.
E2	Humidity sensor problem	Change the sensor/contact customer services.
LO	Environmental humidity is below 20%	The dehumidifier shuts down for self- protection
HI	Environmental humidity is above 90%	
CL	Low temperature protection, the environmental temperature < 5°C	
CH	High temperature protection, the environmental temperature > 35°C	

NOTE: IF YOU EXPERIENCE A PROBLEM WITH YOUR APPLIANCE, PLEASE DO NOT ATTEMPT TO OPEN OR REPAIR THE PRODUCT YOURSELF. DOING SO MAY VOID THE WARRANTY AND COULD CAUSE DAMAGE OR PERSONAL INJURY. IF THE PROBLEM STILL PERSISTS, PLEASE CONTACT US BY REFERRING TO THE SERVICE & SUPPORT INFORMATION ON THE FOLLOWING PAGE.

DECLARATION OF CONFORMITY / PERFORMANCE



Product Code: 70488
Product Description: 12 Litre Dehumidifier

1. Toolstation Limited, Express Park, Bristol Road, Bridgwater, Somerset TA6 4RN

This declaration of conformity is issued under the sole responsibility of Toolstation

2. Object of the declaration

The object of the declaration described above is in conformity with the relevant Community harmonization legislation:

- Electrical Equipment (Safety) Regulations 2016 (LVD 2014/35/EU)
- Electromagnetic Compatibility Regulations 2016(EMC 2014/30/EU)
- The Restriction of the Use of Certain Hazardous Substances in Electrical and Electronic Equipment Regulations 2012(RoHS 2011/65/EU&2015/863/EU)
- REACH (EC) No 1907/2006

3. References to the relevant standards used (or references to the specifications in relation to which conformity is declared:

- BS EN 60335-1:2012+A11+A13+A1+A14+A2
- BS EN 60335-2-40:2003+A11+A12+A1+A2+A13
- BS EN 62233:2008
- BS EN 55014-1:2017+A11
- BS EN 55014-2:2015
- BS EN IEC 61000-3-2:2019
- BS EN 610003-3:2013+A1

4. Additional information:

Signed for and on behalf of Toolstation Limited

ENVIRONMENTAL INFORMATION



The symbol on the product or its packaging indicates that this product must not be disposed of with your other household waste. Instead, it is your responsibility to dispose of your waste equipment by handing it over to a designated collection point for the recycling of waste electrical and electronic equipment. The separate collection and recycling of your waste equipment at the time of disposal will help conserve natural resources and ensure that it is recycled in a manner that protects human health and the environment. For more information about where you can drop off your waste for recycling, please contact your local authority, or where you purchased your product.

GUARANTEE

Toolstation products deliver reliable service for normal, household or trade use in settings. All Toolstation products are individually tested before leaving the factory.

If you are a consumer and you experience a problem with your Toolstation product, which is found to be defective due to faulty materials or workmanship within the Guarantee Period, this Toolstation Guarantee will cover repair or - at the discretion of Toolstation – replacement with a functionally equivalent Toolstation product.

Your product is under guarantee for 1 year from the date of purchase or the date of delivery of the product, if later.

The guarantee is subject to the following provisions:

- The guarantee does not cover accidental damage, misuse, cabinet parts, knobs, or consumable items.
- The product must be correctly installed and operated in accordance with the instructions contained in this manual.
- The guarantee will be rendered invalid if the product is re-sold.
- Specifications are subject to change without notice.
- The manufacturer disclaims any liability for the incidental or consequential damages.
- The guarantee is in addition to, and does not diminish your statutory or legal rights.

CUSTOMER SUPPORT

www.toolstation.com/contact

Call us 0808 100 7211

Mobile friendly 0330 333 3303

Email: info@toolstation.com

Made in China

