

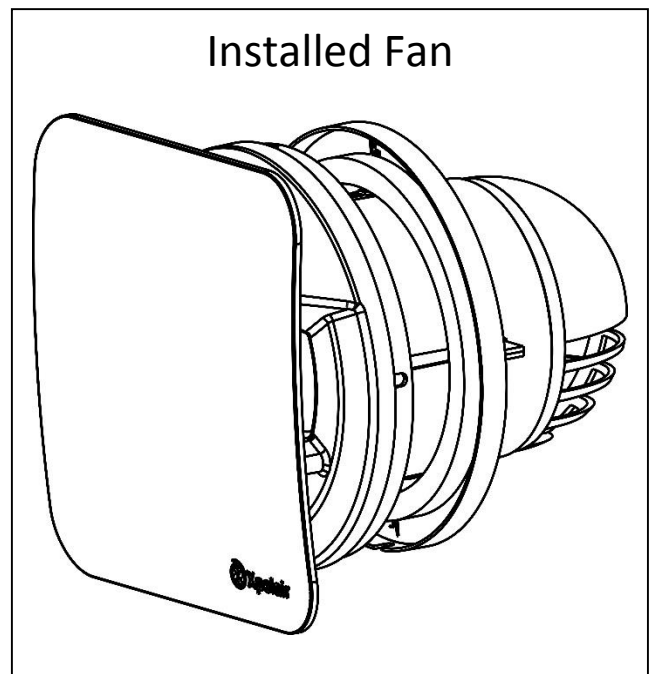
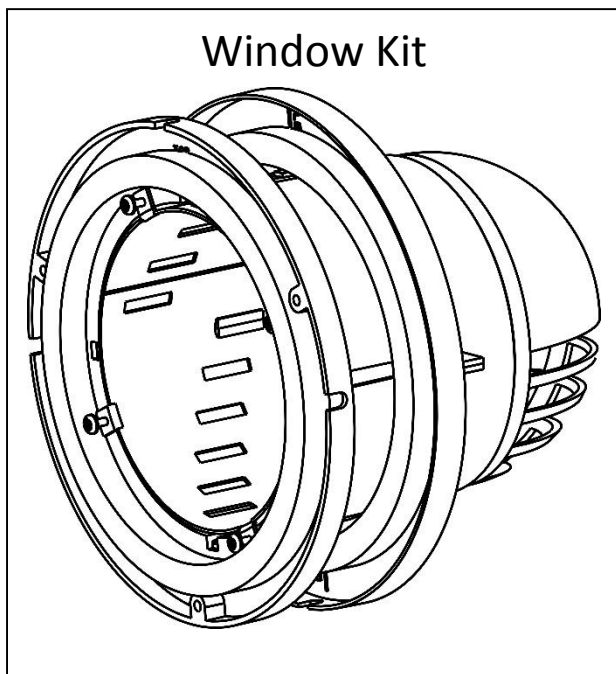


Simply Silent™ Contour Fan

Window Kit Plus

Installation and Maintenance Instructions

Model No. SSWIN+ (Cat No.93235AA) With external seal & cover



- Do read the entire instruction leaflet before commencing installation.
- This window kit is designed to be used with Xpelair Simply Silent™ Contour Fans, C4 series only and installed in a pre cut hole in a glazing unit.
- Install fan in accordance with its installation instructions.
- Do make sure the mains supply is switched off before attempting to make electrical connections or carry out any maintenance or cleaning.

UK customers:

If you have any queries before or after installing this product call the Xpelair Technical Hotline +44 (0) 844 372 7766.

Our engineers are there to help you during normal office hours.

Or you can fax at all other times on +44 (0) 844 372 7767.

Customers outside the UK should contact your local Xpelair distributor.

Please leave this leaflet with the fan for the benefit of the user.



This window kit should only be installed by a competent person into a suitable glazing unit with a pre prepared hole.

The competent person installing this kit should be aware of the dangers associated with installing items in windows.



All Xpelair Simply Silent™ Contour AC fans have the following features:

- Two speed extraction (Selectable at installation)
- Built-in back draught shutter

C4S/C4R

C4PS/C4PR

C4TS/C4TR*

C4HTS/C4HTR*

- Operate the fan using an on/off switch (not supplied).

- Operate the fan using an integral pull-cord.

- Built-in timer operates fan for a preset delay from 30 seconds to 30 minutes.

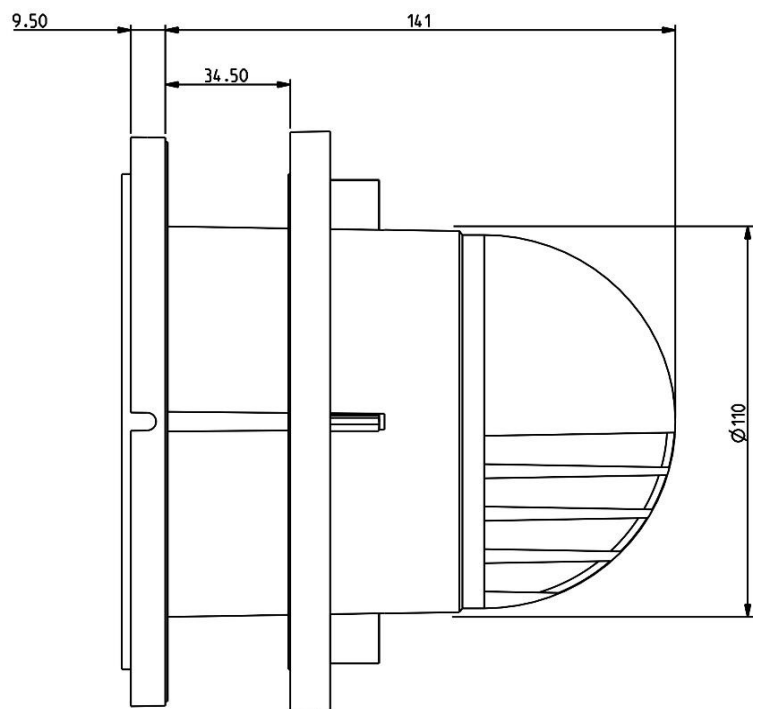
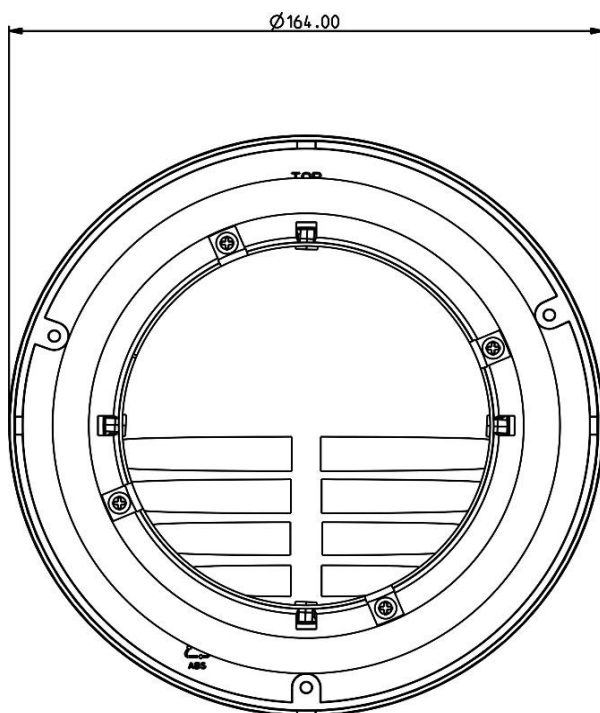
- Operates when triggered automatically by the integral humidity sensor, or by using an external on/off switch (not supplied).

In automatic mode: the built-in timer automatically operates the fan for a pre-set delay time from 30 seconds to 30 minutes once humidity drops below the pre-set Relative Humidity (RH) value.

External operation: When switched off using the external on/off switch the fan continues to run for the preset delay from 30 seconds to 30 minutes.

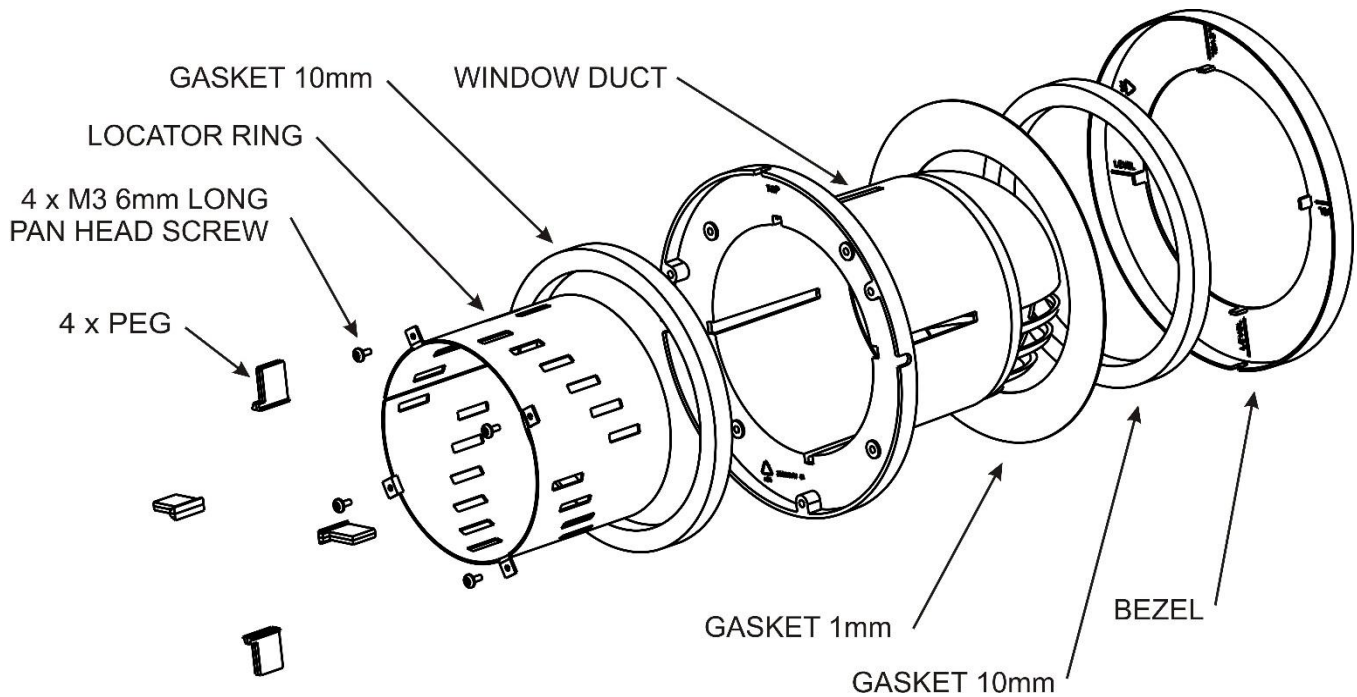
* **Factory settings:** Timer 15 minutes, RH 75%

Overall Dimensions (mm)



Kit must be installed with slots orientated downwards as shown

Window Kit Component Parts



Installation



- In a window glazing unit with a 115mm diameter prepared hole at least 110mm in from the edges of the glazing beads to the centre of the hole. With a maximum thickness of 34.5mm.
- As far away as possible from and opposite to the main source of air replacement to ensure airflow across the room (e.g. opposite the internal doorway).
- Near the source of steam or odours.



- **Not where ambient temperatures are likely to exceed 50°C.**
- **If installed in a kitchen, fans must not be mounted immediately above a cooker hob, or eye level grill.**
- **If installing in a room containing a fuel burning device which has a non-balanced flue, it is the installer's responsibility to ensure that there is enough replacement air to prevent fumes being drawn down the flue when the fan is operating up to maximum extract. Refer to Building Regulations for specific requirements.**

Exhaust air must not be discharged into a flue used for exhausting of fumes from appliances supplied with energy other than electric. Requirements of all authorities concerned must be observed for exhaust air discharge and intake flow rates.

- **Not suitable for use in possible chemical corrosive atmospheres.**

What the installer will need.

- No.1 or 2 Pozidrive screwdriver.

Method



- Remove backing from the 1mm thick gasket and attach to rear of window duct. Insert window duct through hole in window and adhere to window. **ENSURE** slots in window duct face downwards as shown in diagram.
- Remove backing from the 10mm thick gaskets and attach to front of window duct and one to the bezel.
- Insert locator ring into window duct.
- Slide the bezel over the duct from the outside of the window
- Insert the 4 pegs into the appropriate holes in the locator ring to ensure the minimum clearance between peg and the outside surface of the bezel.
- Gently tighten the 4 clamp screws to clamp the window kit in position. (**CAUTION** over tightening may shatter the window).
- Install fan in window kit in accordance with its installation instructions using the 3 x M4 8mm long screws provided.



Cleaning (recommended once a month).

1. Before cleaning, isolate the fan completely from the mains supply.
2. Remove the front cover/baffle assembly by depressing the latch on the underside of the cover and pulling off the front cover / baffle from the bottom.
3. To clean the front cover/baffle assembly, either wipe it with a damp, lint free cloth or wash it with warm soapy water. Thoroughly dry the front cover and refit.
4. Do not immerse the fan in water or other liquids to clean any other parts of the fan.
5. Do not use strong detergents, solvents or chemical cleaners
6. Allow fan to dry thoroughly before use.
7. Apart from cleaning, no other maintenance is required.



Disposal

This product should not be disposed of with household waste.
Please recycle where facilities exist.
Check with your local authority for recycling advice.

Guarantee.

UK only:

We, Redring Xpelair Group Limited, provide a guarantee against faulty parts and manufacture for a period of 2 years from the date of purchase. In the unlikely event of a product breakdown during the guarantee period the product should be returned to the place of purchase or to Redring Xpelair Group Limited.

Exclusions:

- This guarantee does not cover compensation for the loss of the product or consequential loss of any kind.
- Damage or defects to the product arising from incorrect installation or lack of maintenance.
- Transportation costs.

This guarantee does not affect your statutory rights

Technical advice and service

Customers outside UK - see international below.

United Kingdom

Xpelair have a comprehensive range of services including:

- Free technical advice help-desk from Engineers on all aspects of ventilation.
- Free design service, quotations and site surveys.
- Service and maintenance contracts to suit all requirements.

Please ask for details:

- By telephone on Techline: +44 (0) 844 372 7766
- By fax on Techfax: +44 (0) 844 372 7767
- At the address below

Head Office, UK Sales Office and Spares

Redring Xpelair Group Ltd, Newcombe House, Newcombe Way, Orton Southgate, Peterborough, PE2 6SE England

Telephone: +44 (0) 844 372 7761

Fax: +44 (0) 844 372 7762

Sales/Spares Hotline: +44 (0) 844 372 7750

Sales/Spares Faxline: +44 (0) 844 372 7760

<http://www.xpelair.co.uk>

International.

- Guarantee: Contact your local distributor or Xpelair direct for details.
- Technical Advice and Service: Contact your local Xpelair distributor.



FM02118 ISO 9001: 2000

 Redring Xpelair Group



Part No: 26150AA
(Revision A)